



Upper Richmond Road

East Sheen, SW15

Asking Price £1,250,000

Set behind imposing wooden gates is this semi-detached home with three bedrooms, large family bathroom, through reception room with a semi open plan kitchen and landscaped rear garden.

The principal bedroom features a bay window and an expanse of fitted wardrobes, the second bedroom has a wonderful balcony over-looking the large rear garden. There is a further third bedroom/study.

A through reception room has a feature fireplace and leads onto the decked and landscaped garden, there is additional gated side access to the house and garden.

Offered for sale with vacant possession and no onward chain.

The property is located close to outstanding Primary Schools and close to several great private schools such as Ibstock Place School. It is 0.4 miles from Barnes station with frequent commutes to Waterloo and direct travel into Hammersmith via the 33 bus. It is also nearby Richmond Park and Barnes Common "Barnes recreation ground".



Upper Richmond Road

East Sheen, SW15

- Gated House
- Semi-Detached
- Off Street Parking for Two Cars
- Electric Vehicle Charging Point
- Landscaped Rear Garden
- Potential to Extend



Tenure: Freehold

Local Authority: London Borough Richmond upon Thames

Council Tax Band: F

Energy Efficiency Rating		Current	Potential
Very energy efficient - lower running costs			
92-100	A		
81-91	B		85
69-80	C		
55-68	D	65	
39-54	E		
21-38	F		
1-20	G		
Not energy efficient - higher running costs			
England, Scotland & Wales		EU Directive 2002/91/EC	

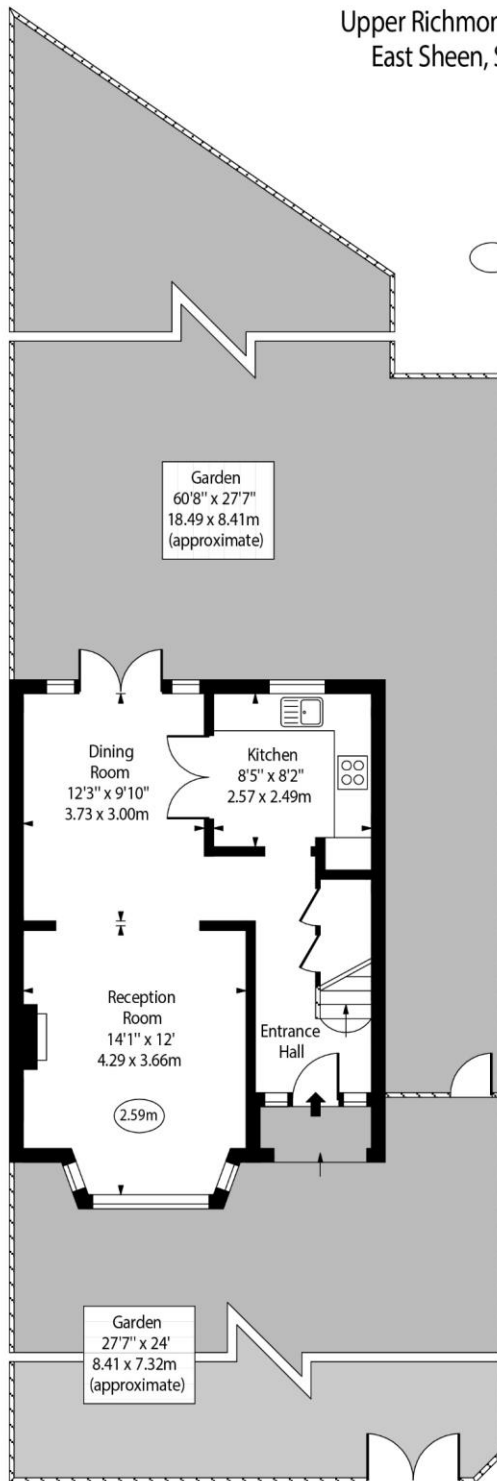
Chestertons East Sheen Sales

254A Upper Richmond Road West
East Sheen
London
SW14 8AG
sheen@chestertons.co.uk
020 8104 0580
chestertons.co.uk

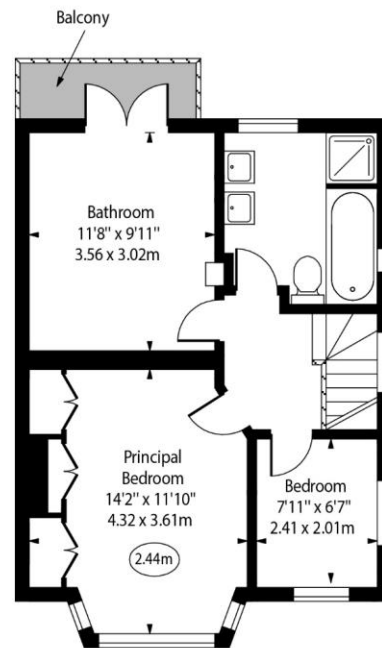
Upper Richmond Road,
East Sheen, SW15



○ - Ceiling Height



Ground Floor



First Floor

Approx Gross Internal Area 938 Sq Ft - 87.14 Sq M

For Illustration Purposes Only - Not To Scale
www.goldlens.co.uk
Ref. No. 025130E

