



Cowley Mansions

Mortlake High Street, SW14

Offers Over £650,000

A beautifully presented bright and spacious two double bedroom flat in this charming period mansion block located in Mortlake moments from The River Thames.

The property has an abundance of period features and high ceilings throughout, to the front of the property is a spacious reception room with original wooden floors, feature fireplace and double glazed windows, off the generous tiled hallway are two double bedrooms both with fitted wardrobes and original wooden floors. There is a lovely modern bathroom and to the rear of the flat is a wonderful dual aspect kitchen/ dining room, the contemporary kitchen has fully integrated appliances and a door with an internal staircase which leads to a lovely communal garden with storage shed and secure rear access.

This lovely property is conveniently located for the shops, bars and restaurants on White Hart Lane, with Barnes Bridge station only 0.2 miles away from the flat. Furthermore, there are additional transport links into Hammersmith and the river towpath just around the corner.



Cowley Mansions

Mortlake High Street, SW14

- First floor mansion flat
- Two double bedrooms
- Well-presented throughout
- Communal Garden
- Close to Barnes Bridge station



Tenure: Leasehold 951 years – expires 24/06/2975

Service Charge: Approximately £2,876 per annum

Ground Rent: £120 per annum

Local Authority: London Borough Richmond upon Thames

Council Tax Band: E

Energy Efficiency Rating		Current	Potential
Very energy efficient - lower running costs			
(92-)	A		
(81-91)	B		
(69-80)	C		
(55-68)	D	64	79
(39-54)	E		
(21-38)	F		
(1-20)	G		
Not energy efficient - higher running costs			
England, Scotland & Wales		EU Directive 2002/91/EC	

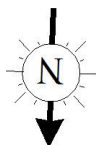
Chestertons East Sheen Sales

254A Upper Richmond Road West
 East Sheen
 London
 SW14 8AG
 sheen@chestertons.co.uk
 020 8104 0580
 chestertons.co.uk

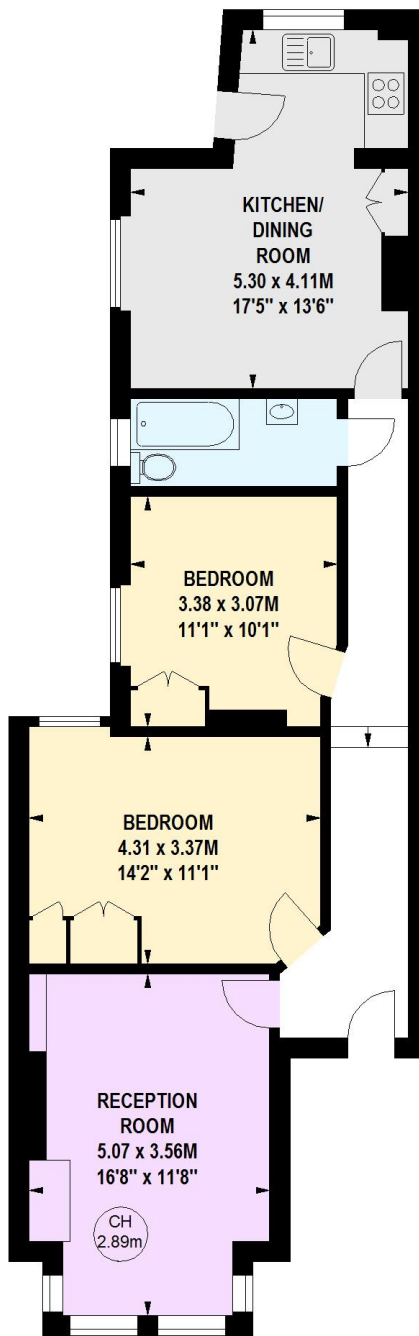
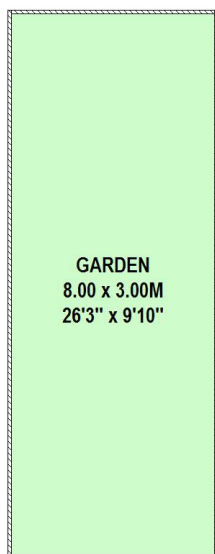
Cowley Mansions, SW14

Approximate gross internal area

78.50 sq m / 845 sq ft



Key :
CH - Ceiling Height



Ground Floor

First Floor

This floor plan is a representation for guidance purposes only, not for valuation.
Any figure is approximate and must not be relied on as a statement of fact.
Copyright of Wyatt Dixon Homes

