



Cowley Mansions

Mortlake High Street, SW14

Asking Price £800,000

A spacious and charming three bedroom flat with access to a communal garden in a highly sought after location. There are good amenities on the doorstep with Barnes Bridge station and the River towpath a few minutes' walk away.

This wonderful flat boasts high ceilings and original features throughout with the accommodation comprising three bedrooms, a spacious living room with large windows and original fireplace, separate kitchen-dining room, shower room and to the rear is a shared garden which only three properties have access to.

Cowley Mansions is a desirable mansion block which has undergone extensive refurbishment in recent years and the location bodes well to families, commuters, upsizers and downsizers alike.



Cowley Mansions

Mortlake High Street, SW14

- Spacious flat
- Three bedrooms
- Garden
- High ceilings
- Convenient location
- Mansion block with period features



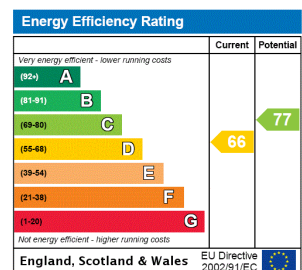
Tenure: Leasehold 91 years 2 months

Service Charge: £1784

Ground Rent: £150

Local Authority: London Borough of Richmond upon Thames

Council Tax Band: E



Chestertons East Sheen Sales

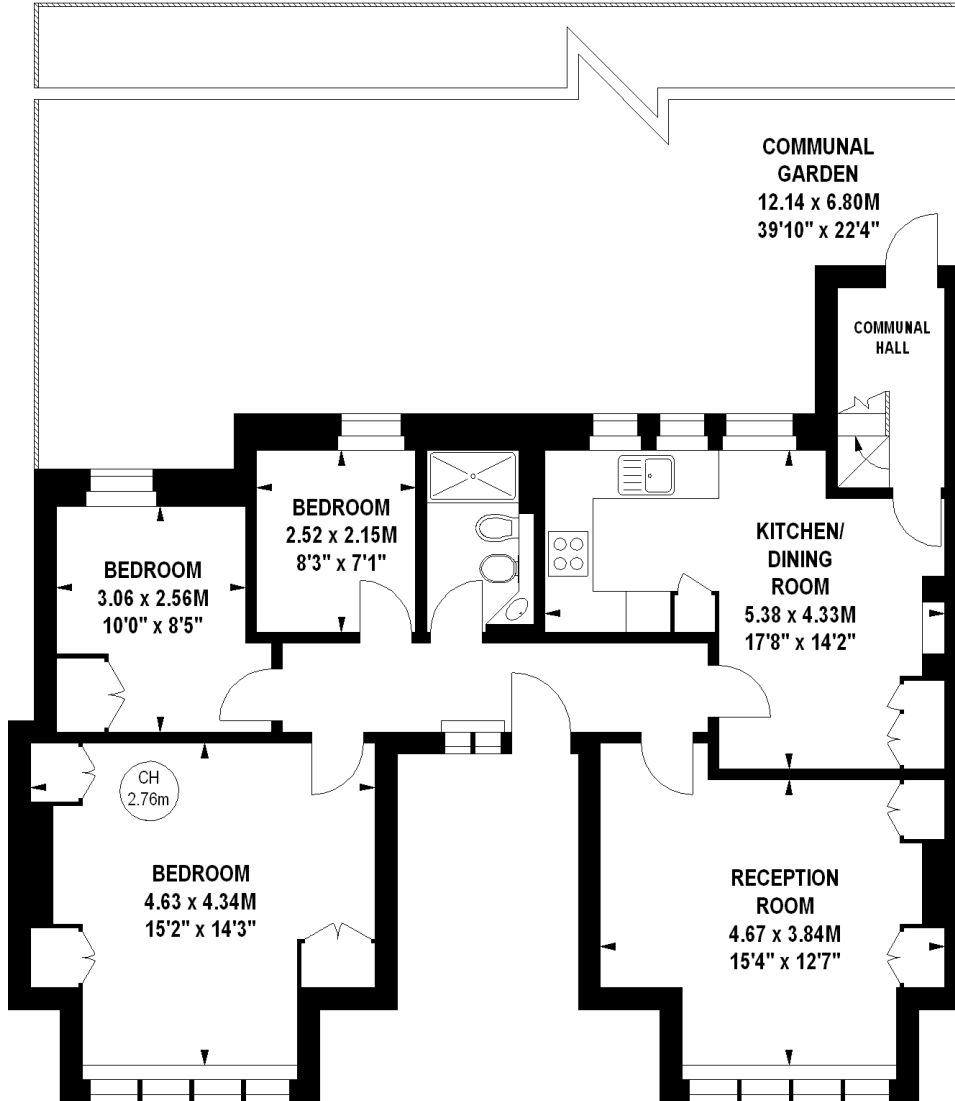
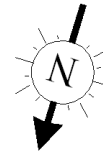
254A Upper Richmond Road West
 East Sheen
 London
 SW14 8AG
 sheen@chestertons.co.uk
 020 8104 0580
 chestertons.co.uk

Cowley Mansions, SW14

Approximate gross internal area

80.64 sq m / 868 sq ft
(Excluding Communal Hall)

Key :
CH - Ceiling Height



Ground Floor

The floor plan is not to scale and measurements and areas shown are approximate and therefore should be used for illustrative purposes only. The plan has been prepared in accordance with the RICS code of Measuring Practice and whilst we have confidence in the information produced, it must not be relied on.

If there is any aspect of particular importance, you should carry out or commission your own inspection of the property.

Copyright of FeaturePRO.

