



Rosemary Terrace

East Sheen, SW14

Asking Price £375,000

Forming part of this attractive period building is a wonderful top-floor one-bedroom conversion flat.

The property is well presented, with high ceilings and great natural light throughout, and comprises a spacious living room, a double bedroom with built-in storage, a good-sized bathroom, a separate kitchen, and a storage cupboard on the landing.

Situated on Rosemary Terrace which has unrestricted on-street parking, it is 0.2 miles away from Mortlake Station with its direct route to London Waterloo, with The River Thames close by as well as the local shops, pubs and restaurants of East Sheen.

This lovely flat is also offered with no onward chain.



Rosemary Terrace

East Sheen, SW14

- Top floor period conversion
- One double bedroom
- High ceilings and good natural light
- Close to amenities
- Mortlake Station nearby
- No onward chain



Tenure: Share of Freehold underlying lease 80 years – Expires 28/09/2104

Service Charge: N/A

Ground Rent: £35 per annum

Local Authority: London Borough Richmond upon Thames

Council Tax Band: C

Energy Efficiency Rating		Current	Potential
Very energy efficient - lower running costs			
(92+)	A		
(81-91)	B		
(69-80)	C		
(55-68)	D	59	66
(39-54)	E		
(21-38)	F		
(1-20)	G		
Not energy efficient - higher running costs			
England, Scotland & Wales		EU Directive 2002/91/EC	

Chestertons East Sheen Sales

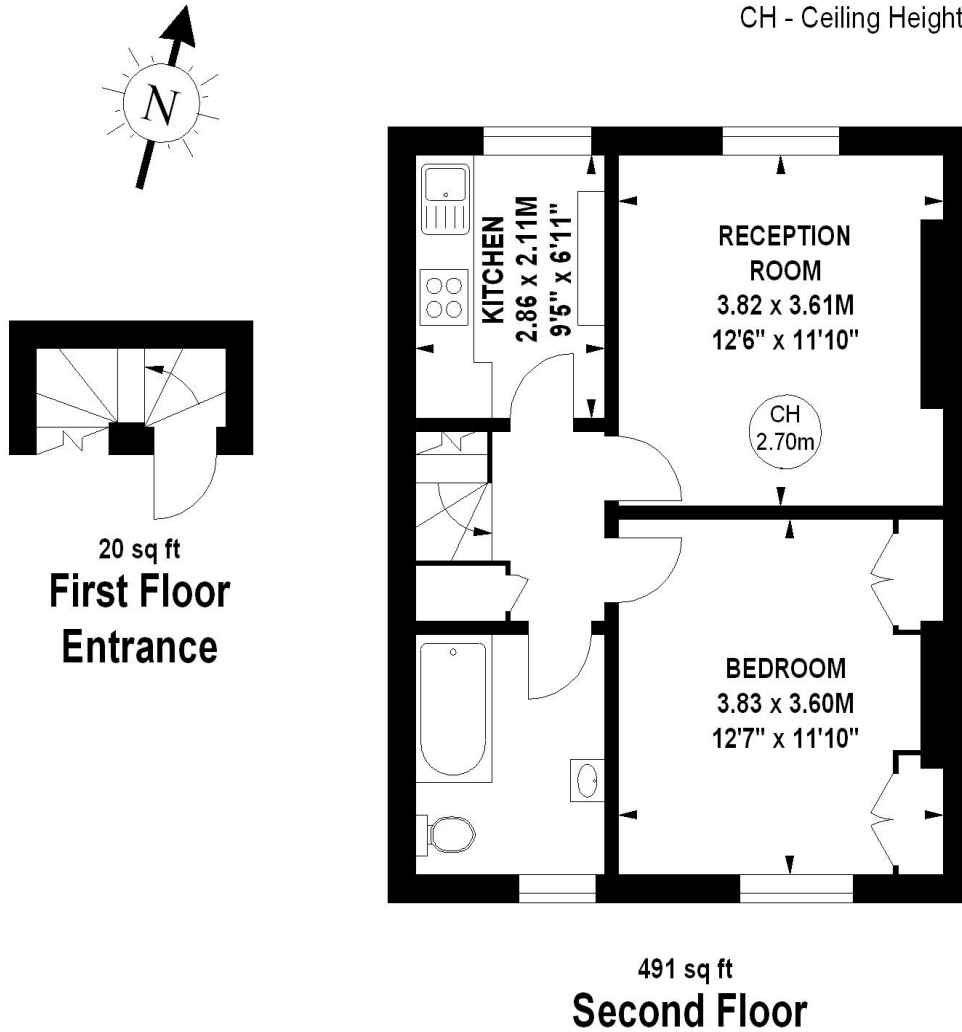
254A Upper Richmond Road West
 East Sheen
 London
 SW14 8AG
 sheen@chestertons.co.uk
 020 8104 0580
 chestertons.co.uk

Rosemary Terrace, SW14

Approximate gross internal area

47.47 sq m / 511 sq ft

Key :
CH - Ceiling Height



The floor plan is not to scale and measurements and areas shown are approximate and therefore should be used for illustrative purposes only. The plan has been prepared in accordance with the RICS code of Measuring Practice and whilst we have confidence in the information produced, it must not be relied on.

If there is any aspect of particular importance, you should carry out or commission your own inspection of the property.

Copyright of FeaturePRO.