



Norfolk House

Courtlands, Richmond, TW10

Asking Price £540,000

This wonderful top floor two double bedroom apartment is situated in a highly sought-after development in Richmond close to Richmond Park and the town centre.

The property is well-presented throughout and consists of an entrance hallway that leads to two double bedrooms both with built-in storage. Additionally, there is a spacious kitchen with plenty of cupboards and worktop space and a door to an internal staircase. There is modern family bathroom and a generous reception with an ornate feature fireplace, space for a dining table and access to the private balcony overlooking the wonderful grounds.

Further benefits include a lift, private garage and a meticulously maintained communal gardens throughout the development.

Courtlands is in close proximity to Richmond Park and town centre, North Sheen Station being only 0.4 miles and many prestigious schools.



Norfolk House

Courtlands, Richmond, TW10

- Two bedroom flat
- Balcony
- Garage
- Residents permit parking available
- Well-maintained communal garden
- Share of freehold



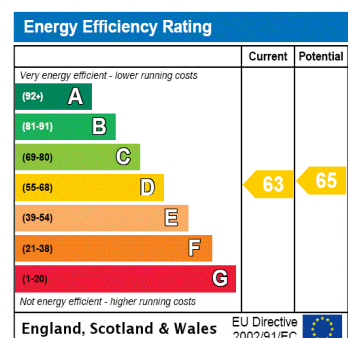
Tenure: Leasehold plus Share of Freehold – 946 years (expires 01/01/2971)

Service Charge: Approximately £4,200 per annum. Includes: Upkeep of the common parts, gardens, lifts, building, external redecoration and maintenance, garage, Building insurance, heating and hot water.

Ground Rent: N/A

Local Authority: London Borough Richmond upon Thames

Council Tax Band: D



Chestertons East Sheen Sales

254A Upper Richmond Road West
East Sheen
London
SW14 8AG
sheen@chestertons.co.uk
020 8104 0580
chestertons.co.uk

Norfolk House, TW10

Approximate gross internal area

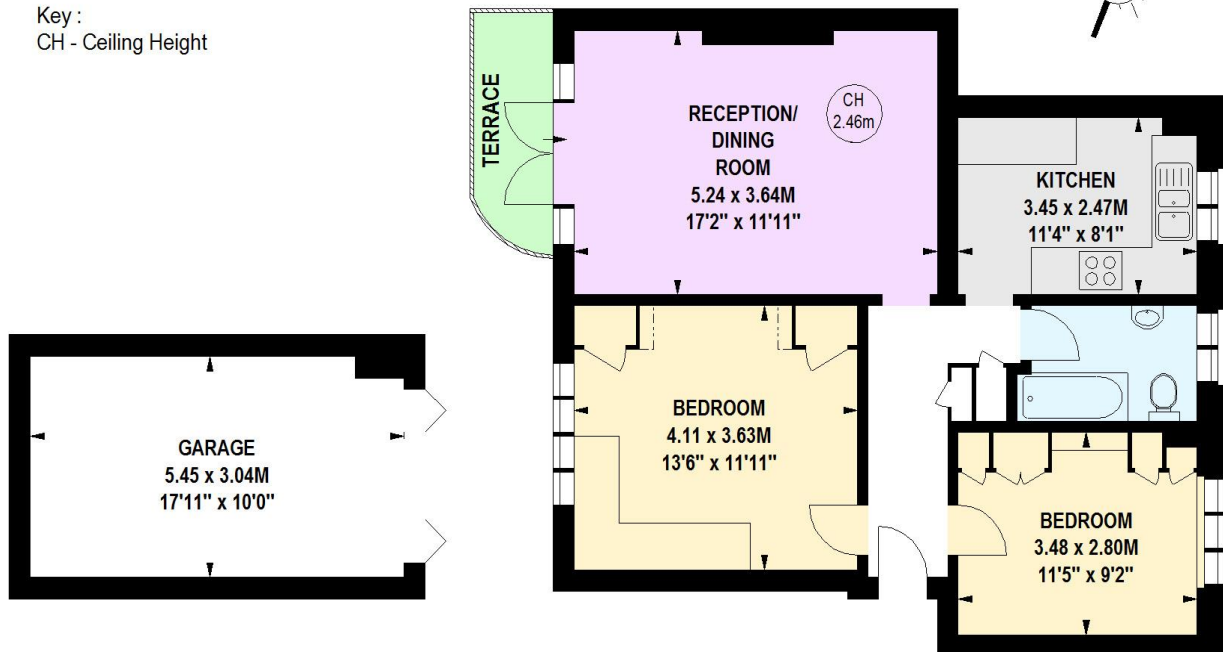
82.22 sq m / 885 sq ft

(Including Garage)

Garage

16.44 sq m / 177 sq ft

Key :
CH - Ceiling Height



177 sq ft
Ground Floor

708 sq ft
Third Floor

This floor plan is a representation for guidance purposes only, not for valuation.
Any figure is approximate and must not be relied on as a statement of fact.

Copyright of Wyatt Dixon Homes

