



Bexhill Road

East Sheen, SW14

Asking Price £1,250,000

This wonderful four bedroom house is situated on a residential cul-de-sac offering accommodation over three floors and situated close to Mortlake Station.

The ground floor offers a large reception room, a further open plan reception, dining area and kitchen opening onto the lovely landscaped garden.

On the first floor there is the family bathroom and two generous double bedrooms, one having an en-suite bathroom.

Ascending to the upper floor you will find two further bedrooms, one with an en-suite bathroom, and eaves storage.

Bexhill Road is ideally located for the amenities of East Sheen including good transport links with Mortlake Station 0.3 miles away providing access to Richmond and Waterloo, and various bus routes to Hammersmith, Barnes & Putney. Thomson House School and St Mary Magdalene's Primary School are also close by.



Bexhill Road

East Sheen, SW14


- Four bedroom house
- Three Bathrooms
- Garden
- Close to Mortlake station
- Convenient for the amenities of East Sheen
- Close to Thomson House School and St Mary Magdalene School



Tenure: Freehold

Local Authority: Richmond upon Thames

Council Tax Band: F

Energy Efficiency Rating		Current	Potential
Very energy efficient - lower running costs			
(92-)	A		
(81-91)	B		
(69-80)	C		81
(55-68)	D	69	
(39-54)	E		
(21-38)	F		
(1-20)	G		
Not energy efficient - higher running costs			
England, Scotland & Wales		EU Directive 2002/91/EC 	

Chestertons East Sheen Sales

254A Upper Richmond Road West
 East Sheen
 London
 SW14 8AG
 sheen@chestertons.co.uk
 020 8104 0580
 chestertons.co.uk

Bexhill Road, SW14

Approximate gross internal area

142.32 sq m / 1532 sq ft

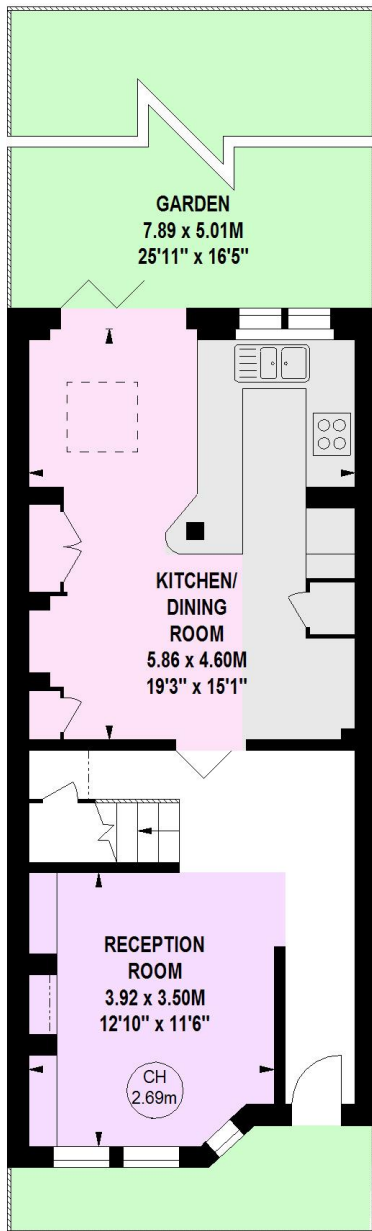
(Including Eaves Storage)

Eaves Storage

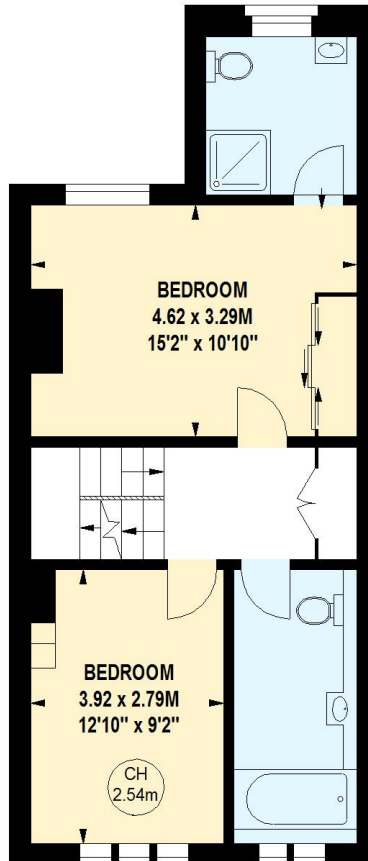
11.80 sq m / 127 sq ft

Key :

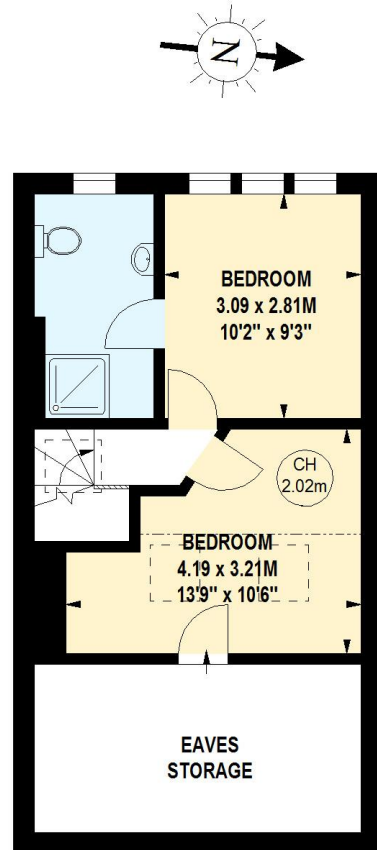
CH - Ceiling Height



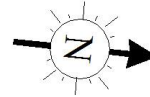
566 sq ft
Ground Floor



511 sq ft
First Floor



328 sq ft
Second Floor



This floor plan is a representation for guidance purposes only, not for valuation.

Any figure is approximate and must not be relied on as a statement of fact.

Copyright of Wyatt Dixon Homes

