



Observatory Road

East Sheen, SW14

Offers Over £1,500,000

A wonderful four bedroom family home with a lovely south facing garden. Located on a quiet residential road close to Sheen Mount School and Richmond Park.



Observatory Road

East Sheen, SW14

- Period House
- Four bedrooms
- South facing garden
- Parkside location



A wonderful four bedroom family home located on a sought after road on the Parkside of East Sheen.

The ground floor of this charming property comprises; wide entrance hallway, W/C, spacious reception room with feature fireplace and bright open plan kitchen with space for an additional sitting area and dining area leading out to the lovely south facing garden.

The first floor continues to impress with two generous double bedrooms, a single bedroom or study and a family bathroom.

On the top floor is a fourth bedroom with en-suite and eves storage.

Observatory Road is within walking distance to the shops and restaurants of East Sheen, 0.5 miles to Mortlake station and is close to outstanding local schools and Richmond Park.

Tenure: Freehold

Local Authority: London Borough of Richmond upon Thames

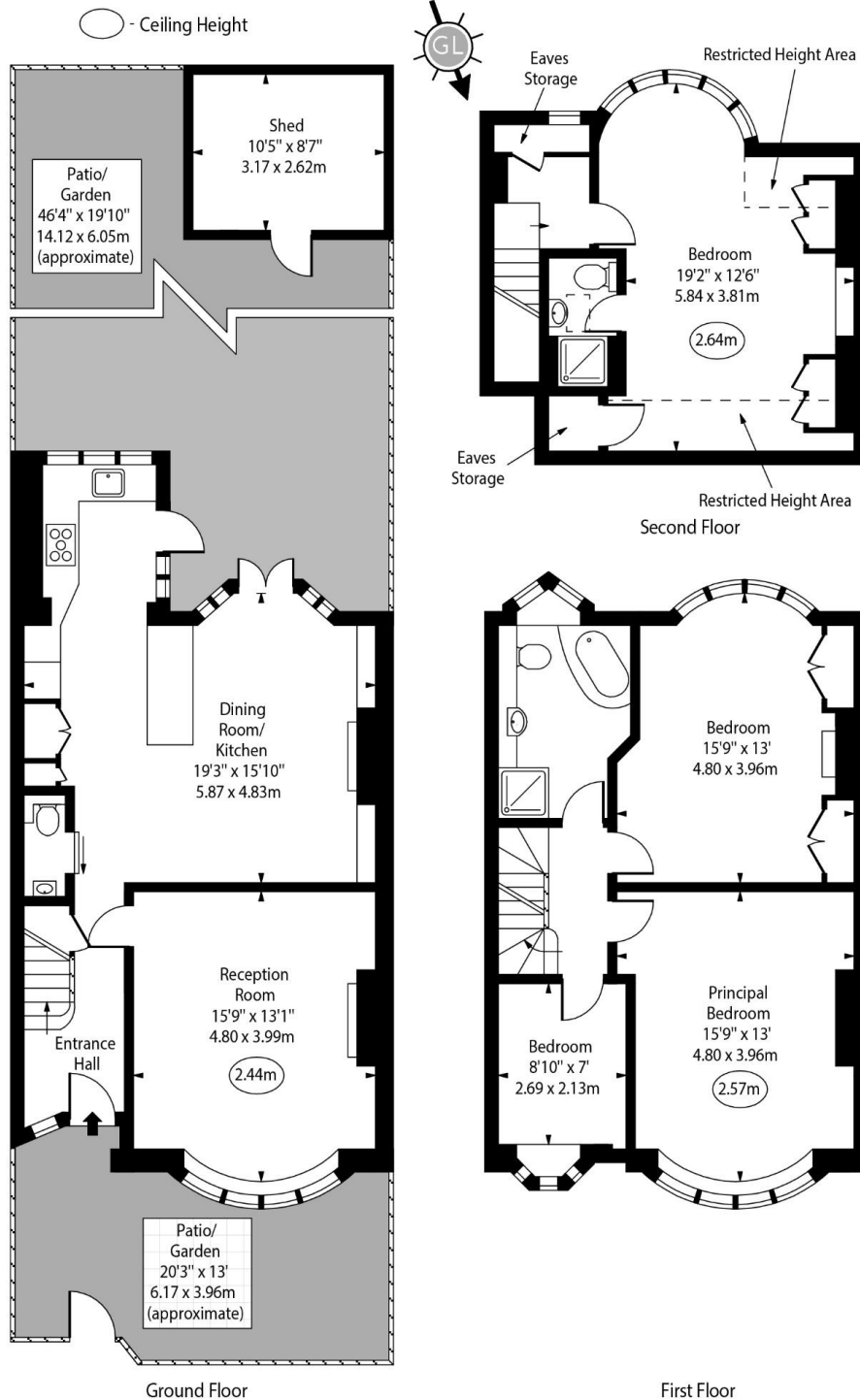
Council Tax Band: G

Energy Efficiency Rating		Current	Potential
Very energy efficient - lower running costs			
(92-100)	A		
(81-91)	B		85
(69-80)	C		
(55-68)	D	64	
(39-54)	E		
(21-38)	F		
(1-20)	G		
Not energy efficient - higher running costs			
England, Scotland & Wales			EU Directive 2002/91/EC

Chestertons East Sheen Sales

254A Upper Richmond Road West
 East Sheen
 London
 SW14 8AG
 sheen@chestertons.co.uk
 020 8104 0580
 chestertons.co.uk

Observatory Road,
East Sheen, SW14



Approx Gross Internal Area 1465 Sq Ft - 136.10 Sq M

Approx. Floor Area Including Restricted Heights 1535 Sq Ft - 142.60 Sq M
(Including Eaves Storage)

For Illustration Purposes Only - Not To Scale
www.goldlens.co.uk
Ref. No. 023624E

Chesterton Global Ltd trading as Chestertons for themselves and for the vendor of this property whose agents they are, give notice that (i) these particulars do not constitute any part of an offer or contract, (ii) all statements contained within these particulars are made without responsibility on the part of Chestertons or the vendor, (iii) whilst made in good faith, none of the statements contained within these particulars are to be relied upon as a statement or representation of fact, (iv) any intending purchasers must satisfy themselves by inspection or otherwise as to the correctness of each of the statements contained within these particulars, (v) the vendor does not make or give either Chestertons or any person in their employment any authority to make or give representation or warranty whatsoever in relation to this property. Wide angle lenses may be used. ©Copyright Chestertons | Chesterton Global Ltd | Registered Office 40 Connaught Street, Hyde Park, London W2 2AB Registered Company Number 05334580.

