



Sandringham House

Courtlands, TW10

Asking Price £750,000

A lovely three bedroom, two bathroom first floor flat with a balcony in Courtlands. The flat is sold with a large garage and is located close to Richmond Park.



Sandringham House

Courtlands, TW10

- Three bedrooms
- Close to Richmond town centre
- Garage
- Balcony
- Communal grounds
- No onward chain



A lovely three bedroom, two bathroom, first-floor flat; with a balcony and a sizeable garage in Courtlands.

The property comprises a large living room, leading onto the balcony and a kitchen with ample storage and a hall cloak cupboard.

There is a light and airy main bedroom with built in storage looking out over lovely communal gardens and with an en-suite bathroom.

There is also a further spacious double bedroom and single bedroom with wardrobes and family bathroom.

Courtlands is a very desirable development within a short distance to Richmond Park. It is close to Richmond town centre, North Sheen Station and many sought after Outstanding rated primary schools. The flat is sold with no onward chain.

Tenure: Leasehold – Expires 01/01/2971

Service Charge: Approximately £7520 per annum (additional service charge for the garage of approx. £258 p.a.)

Ground Rent: N/A

Local Authority: London Borough of Richmond upon Thames

Council Tax Band: E

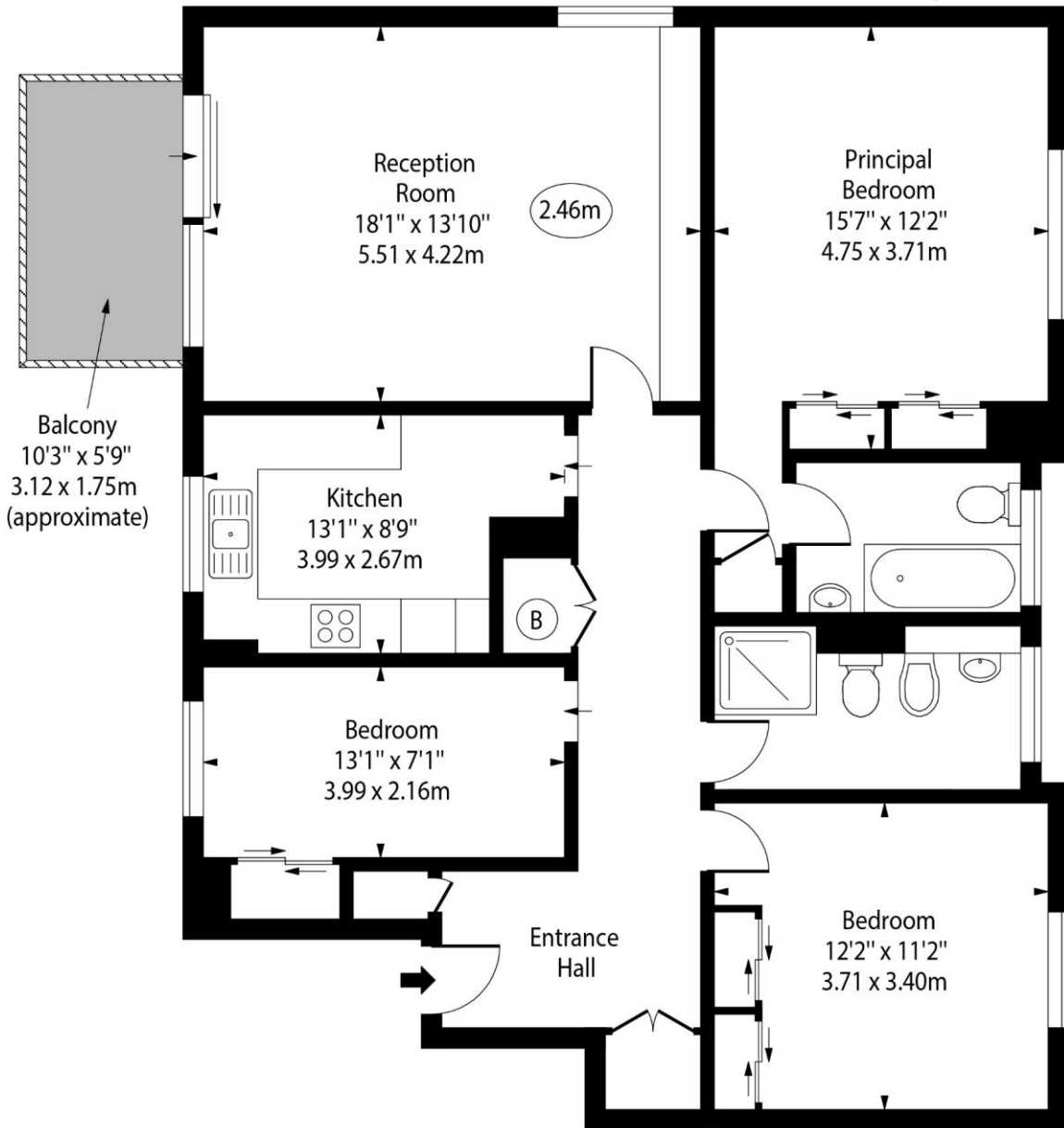
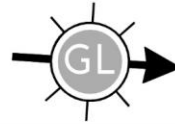
Energy Efficiency Rating		Current	Potential
Very energy efficient – lower running costs			
(92+)	A		
(81-91)	B		
(69-80)	C		
(55-68)	D	68	71
(39-54)	E		
(21-38)	F		
(1-20)	G		
Not energy efficient – higher running costs			
England, Scotland & Wales		EU Directive 2002/91/EC	

Chestertons East Sheen Sales

254A Upper Richmond Road West
 East Sheen
 London
 SW14 8AG
 sheen@chestertons.co.uk
 020 8104 0580
 chestertons.co.uk

Sandringham House, TW10

○ - Ceiling Height



First Floor

Approx Gross Internal Area 1136 Sq Ft - 105.53 Sq M

For Illustration Purposes Only - Not To Scale

www.goldlens.co.uk

Ref. No. 022492E

Chesterton Global Ltd trading as Chestertons for themselves and for the vendor of this property whose agents they are, give notice that (i) these particulars do not constitute any part of an offer or contract, (ii) all statements contained within these particulars are made without responsibility on the part of Chestertons or the vendor, (iii) whilst made in good faith, none of the statements contained within these particulars are to be relied upon as a statement or representation of fact, (iv) any intending purchasers must satisfy themselves by inspection or otherwise as to the correctness of each of the statements contained within these particulars, (v) the vendor does not make or give either Chestertons or any person in their employment any authority to make or give representation or warranty whatsoever in relation to this property. Wide angle lenses may be used. ©Copyright Chestertons | Chesterton Global Ltd | Registered Office 40 Connaught Street, Hyde Park, London W2 2AB Registered Company Number 05334580.



This paper is 100% recyclable