



Vicarage Drive

East Sheen, SW14

Offers in excess of £2,000,000

A charming five bedroom link-detached house located in a quiet cul de sac situated close to both Palewell Common and Richmond Park.

The ground floor comprises a spacious hallway leading to a reception room with fire place, large bay windows and with wood flooring. To the rear is a lovely second reception/ dining room with further large fireplace and French doors leading out to a stunning south facing garden. The kitchen also leads off the dining room with French windows to the garden. There is also a WC and an internally accessible garage with drive way and there is a wonderful feeling of space and light throughout.

On the first floor you will find two sizeable double bedrooms with generous ceiling heights and large windows, a large family bathroom, further study/bedroom and generously proportioned principal bedroom with an impressive mezzanine level. There is a further bedroom on the second floor flooding with natural light and access to plenty of eaves storage. There is also scope to extend and add more square footage.

Vicarage Drive is in a highly sought after location minutes from the green spaces of Palewell Common and Richmond Park, with outstanding-rated schools close by and amenities found on the Upper Richmond Road West. Mortlake station is approx. 0.8 miles away and provides a direct train into



Vicarage Drive

East Sheen, SW14

- Five bedroom Link-Detached House
- Off street parking
- Garage
- South facing garden
- Parkside location



Tenure: Freehold

Service Charge: n/a

Ground Rent: n/a

Council Tax Band: H

Local Authority: London Borough of Richmond upon Thames

Energy Efficiency Rating		
	Current	Potential
Very energy efficient - lower running costs		
(92+) A		
(81-91) B		
(69-80) C		77
(55-68) D		
(39-54) E	43	
(21-38) F		
(1-20) G		
Not energy efficient - higher running costs		
England, Scotland & Wales		EU Directive 2002/91/EC

Chestertons East Sheen Sales

254A Upper Richmond Road West

East Sheen

London

SW14 8AG

sheen@chestertons.co.uk

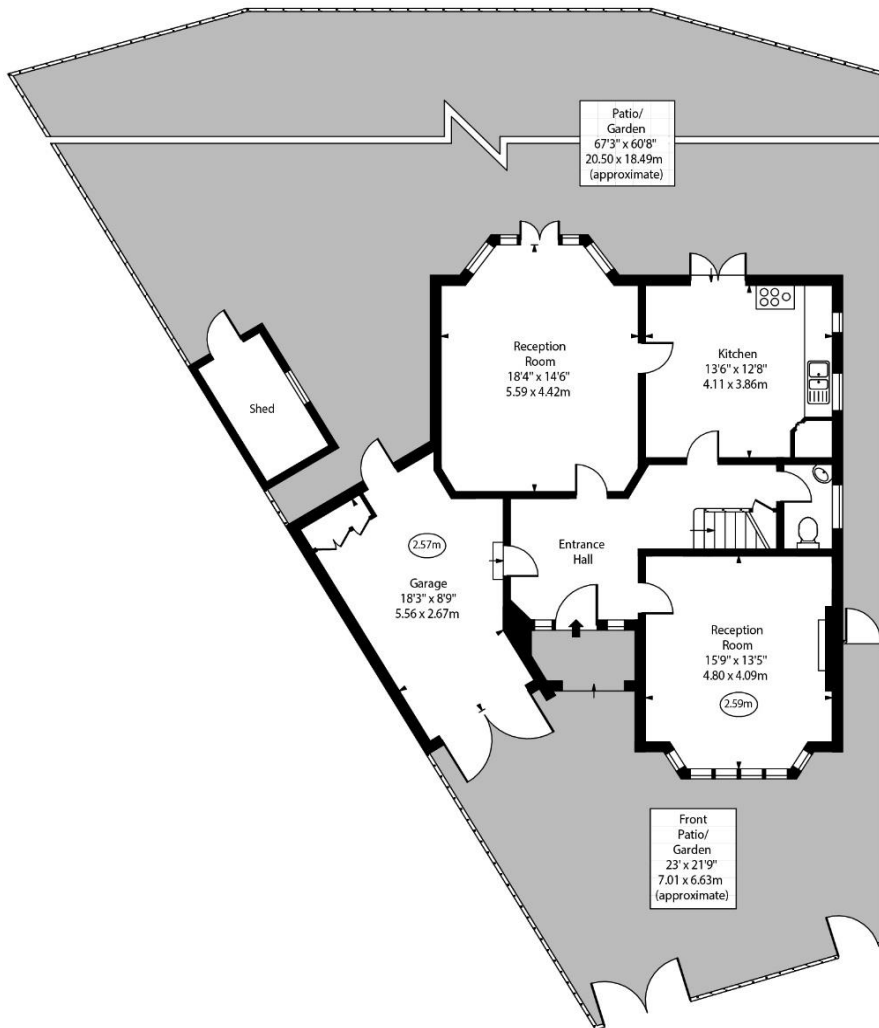
020 8104 0580

chestertons.co.uk

Vicarage Drive,
East Sheen, SW14



○ - Ceiling Height



Ground Floor

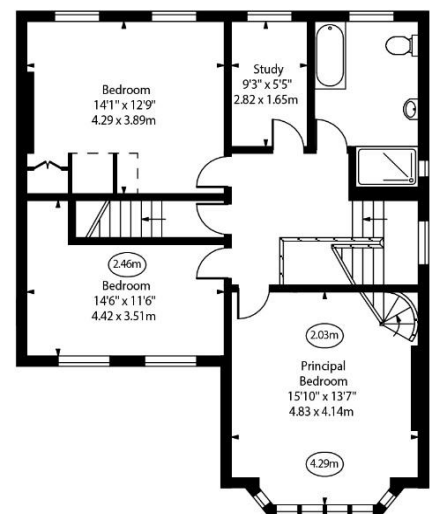
Approx Gross Internal Area 2152 Sq Ft - 199.92 Sq M
(Including Garage)

Approx. Floor Area Including Restricted Heights 2210 Sq Ft - 205.31 Sq M
(Including Garage)

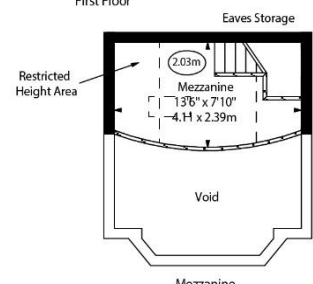
For Illustration Purposes Only - Not To Scale
www.goldilens.co.uk
Ref. No. 023458E



Second Floor



First Floor



Mezzanine

Chesterton Global Ltd trading as Chestertons for themselves and for the vendor of this property whose agents they are, give notice that (i) these particulars do not constitute any part of an offer or contract, (ii) all statements contained within these particulars are made without responsibility on the part of Chestertons or the vendor, (iii) whilst made in good faith, none of the statements contained within these particulars are to be relied upon as a statement or representation of fact, (iv) any intending purchasers must satisfy themselves by inspection or otherwise as to the correctness of each of the statements contained within these particulars, (v) the vendor does not make or give either Chestertons or any person in their employment any authority to make or give representation or warranty whatsoever in relation to this property. Wide angle lenses may be used. ©Copyright Chestertons | Chesterton Global Ltd | Registered Office 40 Connaught Street, Hyde Park, London W2 2AB Registered Company Number 05334580.



This paper is
100% recyclable