



Worple Street

Mortlake, SW14

Asking Price £799,950

A charming period cottage requiring modernisation and located close to Mortlake Station. Sold with no onward chain.



Worple Street

Mortlake, SW14

- House requiring modernisation
- No onward chain
- Two bedrooms
- Close to Outstanding local schools
- Period cottage
- Close to Mortlake Station.



A lovely two bedroom period cottage situated on a popular no-through road in Mortlake in need of modernisation and sold with no onward chain.

The ground floor comprises a reception at the front of the property, dining room, a kitchen and a ground floor bathroom. There is also a secluded garden.

On the first floor there are two bedrooms and a family bathroom

Worple Street is close to Mortlake Station, the shops of White Hart Lane and Sheen Lane and Outstanding local primary schools.

Tenure: Freehold

Service Charge: n/a

Ground Rent: n/a

Local Authority: London Borough of Richmond upon Thames

Council Tax Band: F

TBC

Chestertons East Sheen Sales

254A Upper Richmond Road West

East Sheen

London

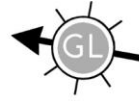
SW14 8AG

sheen@chestertons.co.uk

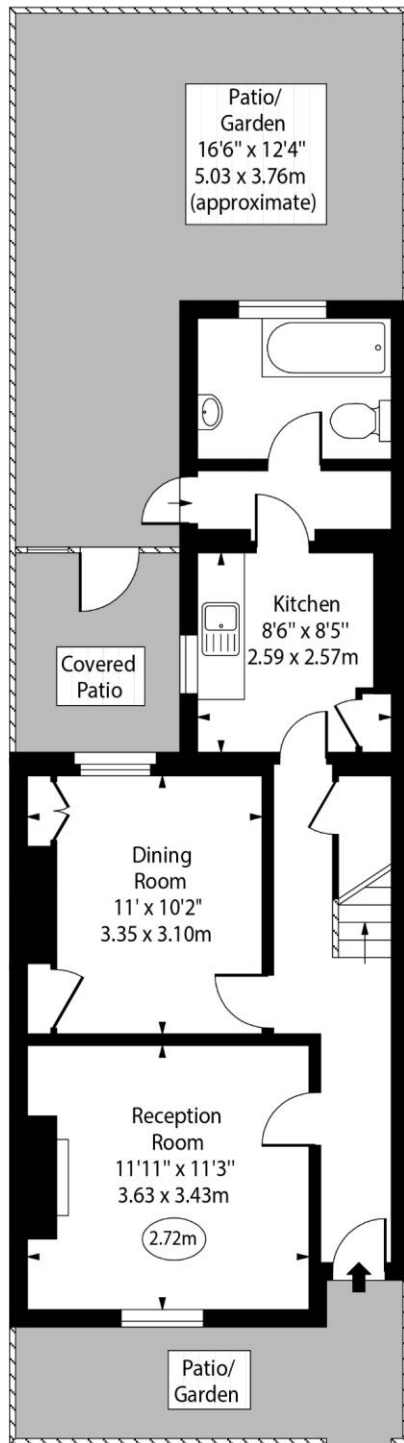
020 8104 0580

chestertons.co.uk

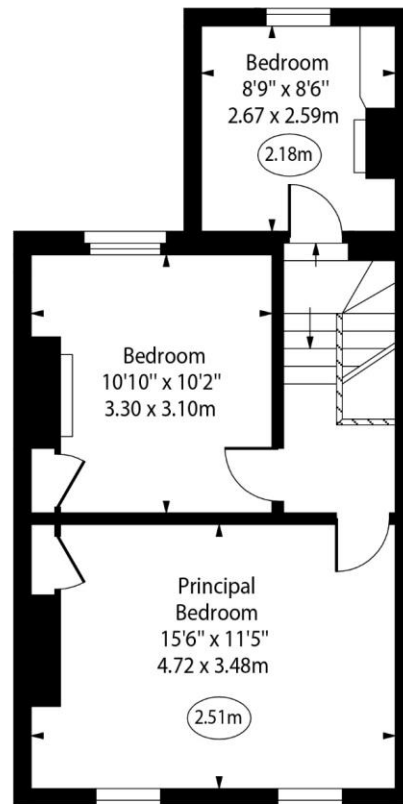
Worple Street,
Mortlake, SW14



○ - Ceiling Height



Ground Floor



First Floor

Approx Gross Internal Area

940 Sq Ft - 87.33 Sq M

For Illustration Purposes Only - Not To Scale

www.goldlens.co.uk

Ref. No. 023435E

