



Milton Road

East Sheen, SW14

Asking Price £950,000

A lovely home on a very popular quiet road in the centre of East Sheen. Three bedrooms, loft extension, two bathrooms and secluded South West facing garden.



Milton Road

East Sheen, SW14

- Three bedroom period house
- Central Sheen location on quiet road
- South west facing garden
- Loft extended
- Two bathrooms



A fantastic three bedroom property situated on a very popular and sought after no-through road in the centre of East Sheen.

Upon entering through a pretty front garden you arrive in a spacious open plan living room with a focal fireplace with a wood burning stove, engineered oak flooring and under stairs storage. This leads through to a dining area, extended kitchen and additional very useful large storage cupboard. The "French doors" open out to a charming secluded low maintenance South West facing garden with established planting, wooden garden shed and rear access.

On the first floor there are two well sized bedrooms with built in storage and a lovely modern family bathroom.

The loft has been extended to incorporate a light and bright principal bedroom with fitted wardrobes, plenty of eaves storage and en-suite shower room.

Milton Road is a quiet residential road located behind Upper Richmond Road, perfect for access to Mortlake Station being only 0.2 miles away and the shops, restaurants and cafes in the town centre. It is also very close to the sought after "Thompson House primary school.

Tenure: Freehold

Local Authority: London Borough of Richmond upon Thames

Council Tax Band: E

Energy Efficiency Rating		Current	Potential
Very energy efficient - lower running costs			
(92-100)	A		
(81-91)	B		83
(69-80)	C	70	
(55-68)	D		
(39-54)	E		
(21-38)	F		
(1-20)	G		
Not energy efficient - higher running costs			
England, Scotland & Wales		EU Directive 2002/91/EC	

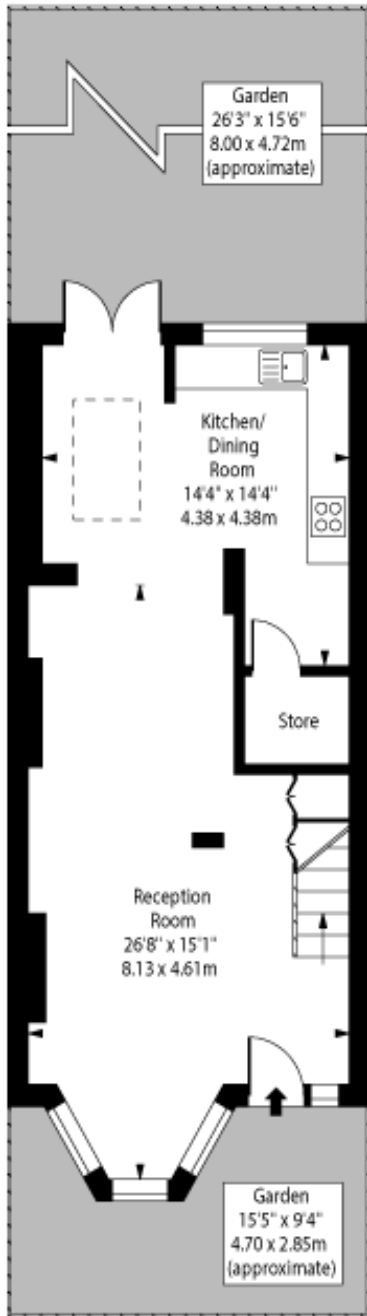
Chestertons East Sheen Sales

254A Upper Richmond Road West
 East Sheen
 London
 SW14 8AG
 sheen@chestertons.co.uk
 020 8104 0580
 chestertons.co.uk

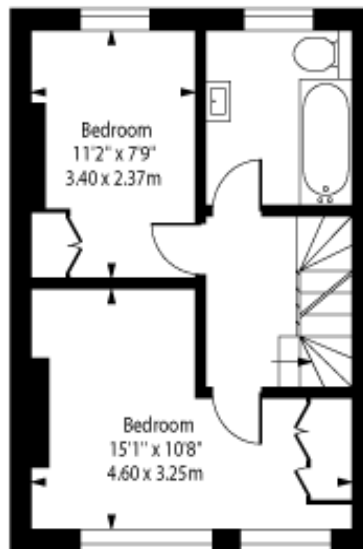
Milton Road,
East Sheen, SW14



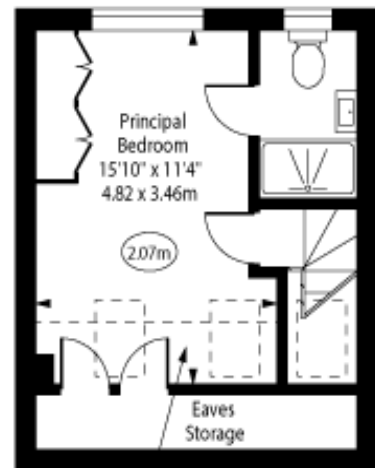
○ - Ceiling Height



Ground Floor



First Floor



Second Floor

Approx Gross Internal Area 1065 Sq Ft - 98.94 Sq M

Approx. Floor Area Including Restricted Heights 1142 Sq Ft - 106.09 Sq M

(Including Eaves Storage)

For Illustration Purposes Only - Not To Scale

www.goldlens.co.uk

Ref. No. 023155J

Chesterton Global Ltd trading as Chestertons for themselves and for the vendor of this property whose agents they are, give notice that (i) these particulars do not constitute any part of an offer or contract, (ii) all statements contained within these particulars are made without responsibility on the part of Chestertons or the vendor, (iii) whilst made in good faith, none of the statements contained within these particulars are to be relied upon as a statement or representation of fact, (iv) any intending purchasers must satisfy themselves by inspection or otherwise as to the correctness of each of the statements contained within these particulars, (v) the vendor does not make or give either Chestertons or any person in their employment any authority to make or give representation or warranty whatsoever in relation to this property. Wide angle lenses may be used. ©Copyright Chestertons | Chesterton Global Ltd | Registered Office 40 Connaught Street, Hyde Park, London W2 2AB Registered Company Number 05334580.



This paper is
100% recyclable