



# Sheen Lane

East Sheen, SW14

Asking Price £2,200,000

A lovely five bedroom semi-detached 1930's house close to Sheen Gate of Richmond Park.

Set back from the road with off street parking this handsome house on the Parkside requires modernisation and has potential to extend to create a spacious and impressive family home.

The ground floor boasts a welcoming and generously sized entrance hall, convenient w/c, garage, two light and airy reception rooms, one at the front of the house and the other at the rear offering access to the garden creating a seamless indoor-outdoor flow. There is a light kitchen and separate dining room that also opens up to the spacious garden.

Ascending to the first floor, you'll find a family bathroom, three spacious double bedrooms with built-in storage, and the principle bedroom featuring abundant storage.

Positioned on this popular Parkside location, the house is ideally located nearby to all of the amenities found in East Sheen. Located approx. 0.7 miles to Mortlake station with easy access to central London. There are also many schools nearby including East Sheen Primary, Sheen Mount Primary, Thomson House and Tower House.





# Sheen Lane

## East Sheen, SW14

- Semi-detached
- Five bedrooms
- West facing garden
- Close to Richmond Park
- Off street parking and garage
- No onward chain





**Tenure:** Freehold

**Service Charge:** N/A

**Ground Rent:** N/A

**Local Authority:** London Borough of Richmond upon Thames

**Council Tax Band:** G

Energy Efficiency Rating		Current	Potential
Very energy efficient - lower running costs			
(92+)	A		
(81-91)	B		84
(69-80)	C		
(55-68)	D	64	
(39-54)	E		
(21-38)	F		
(1-20)	G		
Not energy efficient - higher running costs			
England, Scotland & Wales		EU Directive 2002/91/EC	

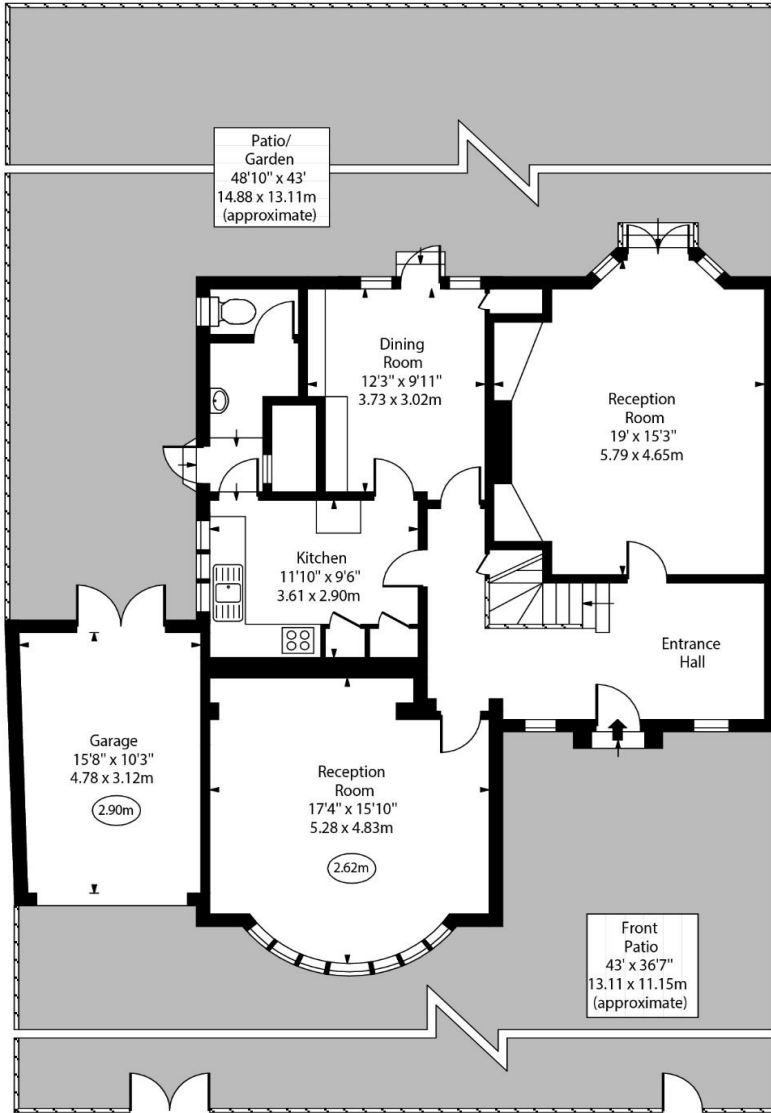
**Chestertons East Sheen Sales**

254A Upper Richmond Road West  
 East Sheen  
 London  
 SW14 8AG  
 sheen@chestertons.co.uk  
 020 8104 0580  
 chestertons.co.uk

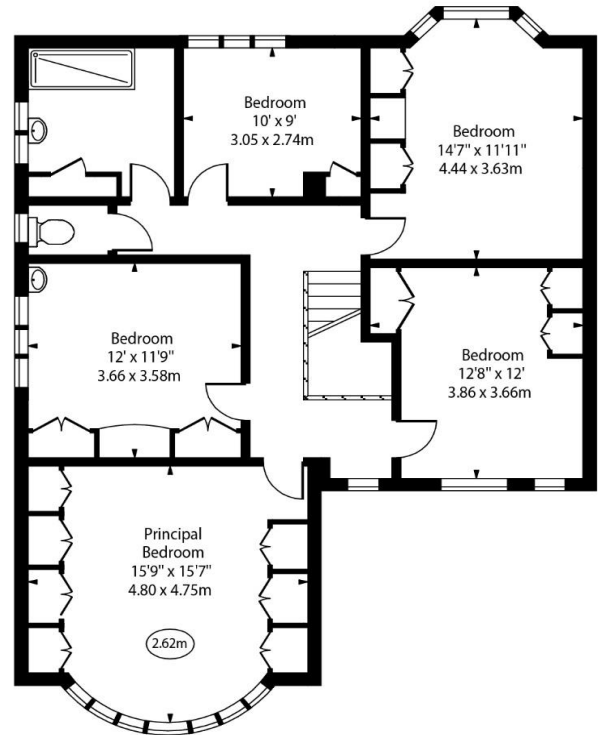
Sheen Lane, SW14



○ - Ceiling Height



Ground Floor



First Floor

Approx Gross Internal Area 2064 Sq Ft - 191.75 Sq M  
(Excluding Garage)

Approx Gross Internal Area 2230 Sq Ft - 207.17 Sq M  
(Including Garage)

For Illustration Purposes Only - Not To Scale  
www.goldens.co.uk  
Ref. No. 021998E

Chesterton Global Ltd trading as Chestertons for themselves and for the vendor of this property whose agents they are, give notice that (i) these particulars do not constitute any part of an offer or contract, (ii) all statements contained within these particulars are made without responsibility on the part of Chestertons or the vendor, (iii) whilst made in good faith, none of the statements contained within these particulars are to be relied upon as a statement or representation of fact, (iv) any intending purchasers must satisfy themselves by inspection or otherwise as to the correctness of each of the statements contained within these particulars, (v) the vendor does not make or give either Chestertons or any person in their employment any authority to make or give representation or warranty whatsoever in relation to this property. Wide angle lenses may be used. ©Copyright Chestertons | Chesterton Global Ltd | Registered Office 40 Connaught Street, Hyde Park, London W2 2AB Registered Company Number 05334580.



This paper is 100% recyclable