



Ormonde Road

East Sheen, SW14

Asking Price £1,325,000

A very well presented four bed two bath semi-detached family home offering approximately 1500 sq. ft. of light and spacious living space with the added benefit of a stunning garden.



Ormonde Road

East Sheen, SW14

- Four bedrooms
- Two bathrooms
- Approx. 1500 Sq. ft.
- Close to centre of East Sheen
- Close to Mortlake station



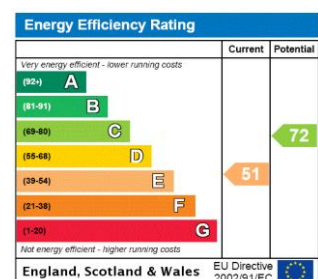
A very well presented four bed semi-detached period family home located on this popular residential road in the centre of East Sheen.

This charming home benefits from a lovely mature garden and the kitchen has been extended to provide a dining room with additional reception area which could be adapted to a play room. The formal reception room to the front of the property boasts period features, high ceiling and a bay window overlooking the mature front garden.

The first floor comprises three bedrooms and the family bathroom and the loft has been sympathetically converted to house a further fourth bedroom and a shower room with walk in shower and loo under the eaves.

Ormonde Road is a popular tree lined street positioned centrally in East Sheen. Mortlake rail station, Waitrose and Richmond Park are all within close proximity to the property together with a selection of 'Outstanding' Ofsted rated Primary Schools.

Tenure: Freehold
Local Authority: London Borough of Richmond upon Thames
Council Tax Band: F

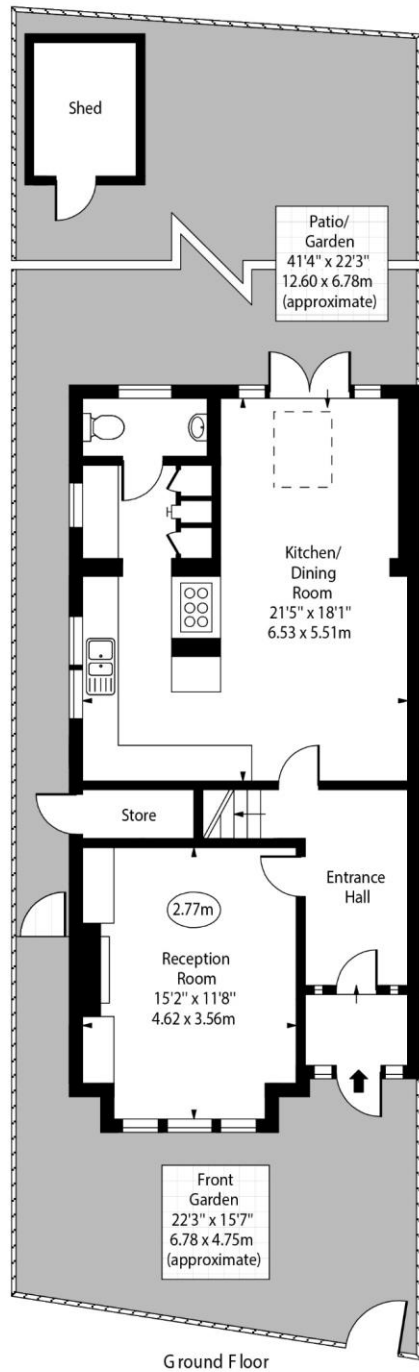


Chestertons East Sheen Sales

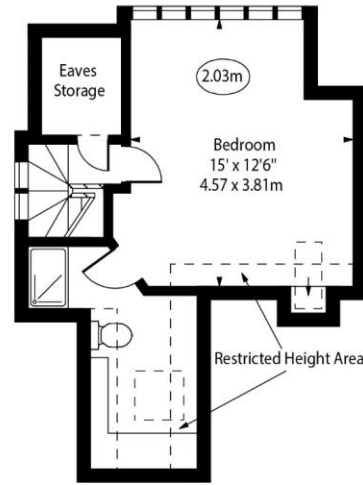
254A Upper Richmond Road West
 East Sheen
 London
 SW14 8AG
 sales.sheen@chestertons.com
 020 8104 0580
 chestertons.com

○ - Ceiling Height

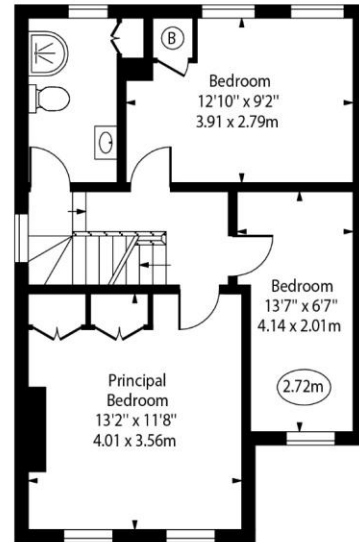
Ormonde Road, SW14



Ground Floor



Second Floor



First Floor

Approx Gross Internal Area 1426 Sq Ft - 132.48 Sq M

Approx. Floor Area Including Restricted Heights 1496 Sq Ft - 138.96 Sq M

(Excluding Store & Shed)

For Illustration Purposes Only - Not To Scale

www.goldlens.co.uk

Ref. No. 017511E

Chesterton Global Ltd trading as Chestertons for themselves and for the vendor of this property whose agents they are, give notice that (i) these particulars do not constitute any part of an offer or contract, (ii) all statements contained within these particulars are made without responsibility on the part of Chestertons or the vendor, (iii) whilst made in good faith, none of the statements contained within these particulars are to be relied upon as a statement or representation of fact, (iv) any intending purchasers must satisfy themselves by inspection or otherwise as to the correctness of each of the statements contained within these particulars, (v) the vendor does not make or give either Chestertons or any person in their employment any authority to make or give representation or warranty whatsoever in relation to this property. Wide angle lenses may be used. ©Copyright Chestertons | Chesterton Global Ltd | Registered Office 40 Connaught Street, Hyde Park, London W2 2AB Registered Company Number 05334580.



This paper is 100% recyclable