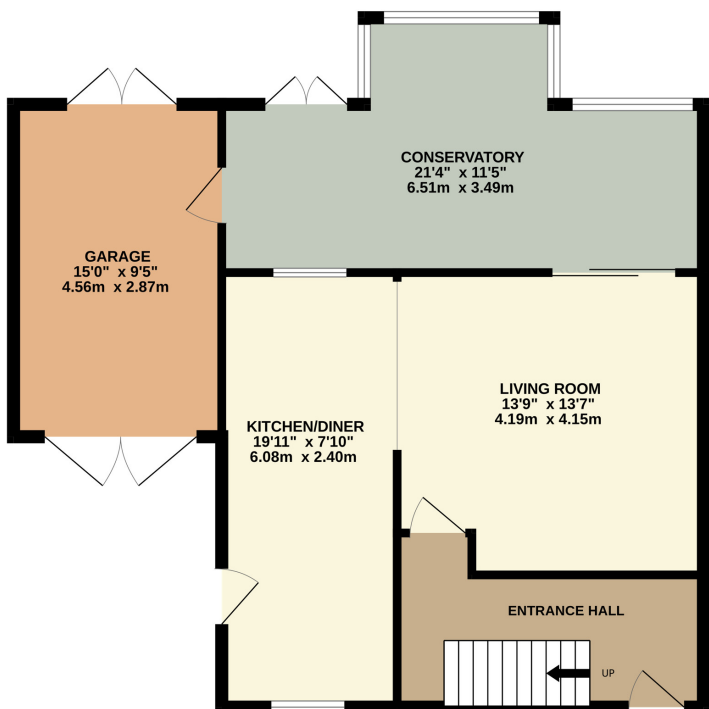




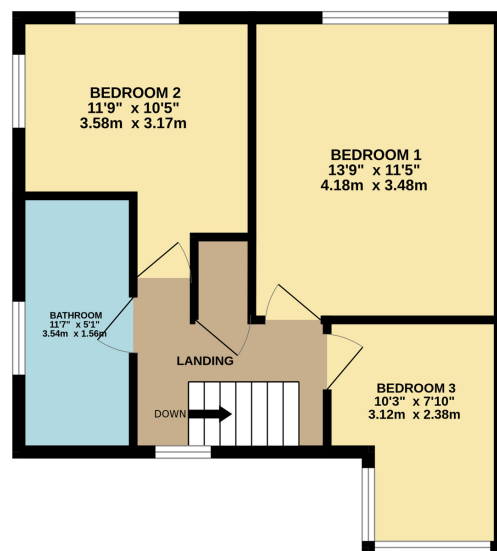
FLOOR LAYOUT

Not to Scale - For Identification Purposed Only

GROUND FLOOR
762 sq.ft. (70.7 sq.m.) approx.



1ST FLOOR
450 sq.ft. (41.8 sq.m.) approx.



TOTAL FLOOR AREA : 1211 sq.ft. (112.5 sq.m.) approx.

Whilst every attempt has been made to ensure the accuracy of the floorplan contained here, measurements of doors, windows, rooms and any other items are approximate and no responsibility is taken for any error, omission or mis-statement. This plan is for illustrative purposes only and should be used as such by any prospective purchaser. The services, systems and appliances shown have not been tested and no guarantee as to their operability or efficiency can be given.
Made with Metropix ©2024

www.edwardmellor.co.uk



Features

- Stunning 3 Bedroom Family Home
- Stylish Open Plan Interior
- Fabulous Size Lawned Gardens
- Superbly Fitted Kitchen & Bathroom
- Driveway & Garage

When you are looking for a beautifully presented family home in a highly regarded residential location, it doesn't come much better than this. Welcome to Dovedale Road off Marple Road in Offerton. This exceptional semi detached home features a stylish open plan interior where attention to detail is evident throughout and makes this well

proportioned property simply ready to move into. In addition to its stunning and "Chic" interior, the property is complimented by a characterful exterior and stands within extensive lawned gardens which are ideal for outdoor recreational use and entertaining family and friends. The property also features a superbly fitted

open plan dining kitchen, attractively fitted 4 piece dining room, full width conservatory overlooking the lawned gardens, 3 great size and fitted bedrooms and a driveway and garage providing ample off road parking. Viewing essential.



Dovedale Road is a highly sought after residential location which embraces a friendly community atmosphere among its residents and is within close proximity of excellent schools and local shopping facilities. The accommodation on offer briefly comprises : Welcoming entrance hall with stairs leading to the first floor, open plan living room providing more than ample room for seating, superbly fitted dining kitchen and a full width conservatory with French doors leading to the delightful lawned gardens and also providing direct access to the attached garage. To the first floor a landing leads to 3 well proportioned bedrooms all of which offer a range of fitted wardrobes and vanity areas whilst an attractively fitted 4 piece bathroom suite with walk in shower completes the first floor accommodation. A long driveway and landscaped garden frontage leads to an attached brick built garage to provide ample parking whilst to the rear are fabulous size and private lawned gardens which offer a safe haven for young children and are simple perfect for outdoor entertaining.

