



Price

£1,100 PCM

Fees Apply



Available 10/05/24

**Central Avenue
Herne Bay CT6**

Wards
Helping you move forwards



Main Features

- Good Size Garden
- Walking Distance Of Seafront
- Conservatory/Utility
- Plenty Of Character
- Great Location
- Viewing Advised



Deposit required is £1,269.23
Canterbury District - Council Tax Band Tax Band C

Renting a property is a big commitment and we recommend that you visit the local authority website and these websites which offer helpful information and advice about letting

www.gov.uk/government/publications/how-to-rent

www.gov.uk/private-renting

www.wardsofkent.co.uk/letting/our-tenancy-fees/

www.gov.uk/green-deal-energy-saving-measures

Call Herne Bay 01227 361740 ■ wardsofkent.co.uk

IMPORTANT INFORMATION: Please note that administration fees are charged in addition to the rent and security deposit. Please contact our Lettings Team who will confirm the total costs involved in renting this property. For clarification, we wish to inform the prospective tenant that we have prepared these details as a general guide. The agent has not carried out a detailed survey nor tested the services, appliances, or specific fittings (unless otherwise stated), and no warranty can be given as to their condition. All room measurements are taken at floor level. We strongly recommend that all the information which we provide about the property is verified by yourself and your advisers. The contents of this publication are © Wards, 2015. Wards is a trading name of Arun Estates Limited Registered in England No. 2597969

Accommodation

Entrance Hall

Lounge 3.39 x 3.32

Kitchen 2.4 x 2.1

Bathroom 2.1 x 1.82

Conservatory 2.34 x 2.25

Utility Room 2.34 x 2

Landing

Bedroom 1 4.4 x 3.1

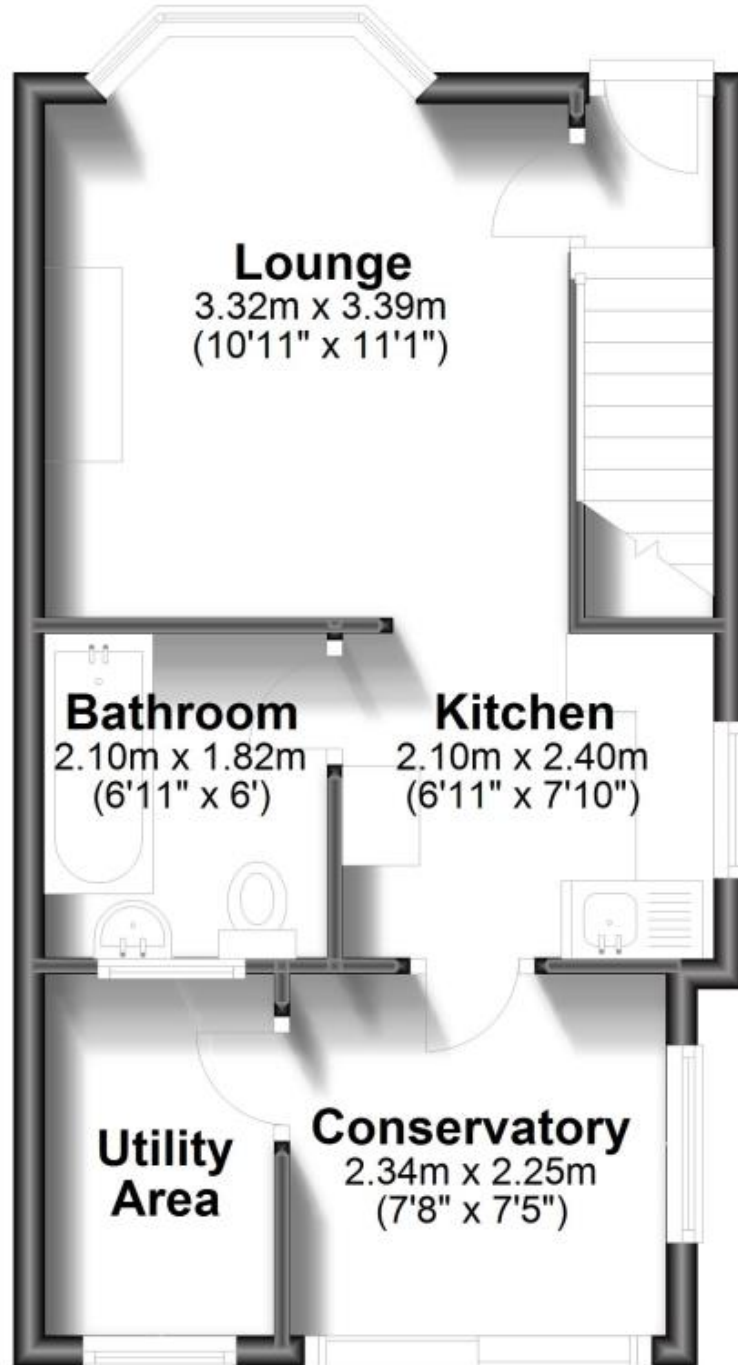
Bedroom 2 2.45 x 2.4

Rear Garden



Ground Floor

Approx. 33.5 sq. metres (360.1 sq. feet)



First Floor

Approx. 24.2 sq. metres (260.0 sq. feet)

