



- THREE/FOUR BEDROOMS
- LARGE CORNER PLOT
- POTENTIAL TO EXTEND
- GARAGE

### 3 Pine Gardens, Eastcote, Ruislip, HA4 9TN

Asking Price Of £675,000

Andrews Residential are delighted to offer to the market this attractive three/four bedroom semi detached family home. The property is situated on a large corner plot and offers huge scope for further extension subject to the usual consents. This ideal location gives easy access to both Eastcote & Ruislip Manors shops and station. Early viewings advised.





## Property Description

### THE LOCATION

Ruislip Manor & Eastcote's range of shopping and transport facilities are just a short walk away. The Metropolitan/Piccadilly line provides reliable links into the City and West End. The property is also located perfectly for bus links giving easy access to South Ruislip & Ruislip Gardens Central Line stations. For the motorist the A40 is a short drive away providing access to Central London and the Home Counties. For families, there are a number of highly regarded schools that cater for children of all ages within close proximity including Lady Bankes, Sacred Heart and Ruislip High. Shenley and Ruislip Parks are also a short walk away.

### THE PROPERTY

Accommodation comprises entrance hall, through lounge/study, kitchen, second reception possible bedroom four with en-suite w/c. To the first floor there are three good size bedrooms, a family bathroom with power shower and landing access to the loft. Benefits include double glazing, gas central heating and refurbished original parquet flooring.

### OUTSIDE

To the rear of the property there is a good size, well-kept garden which is mainly laid to lawn. To the side there is a good size plot with detached garage offering huge potential to further extend subject to the usual consents. The front of the property has a low maintenance garden with retaining hedges and a parking area which leads to the garage.

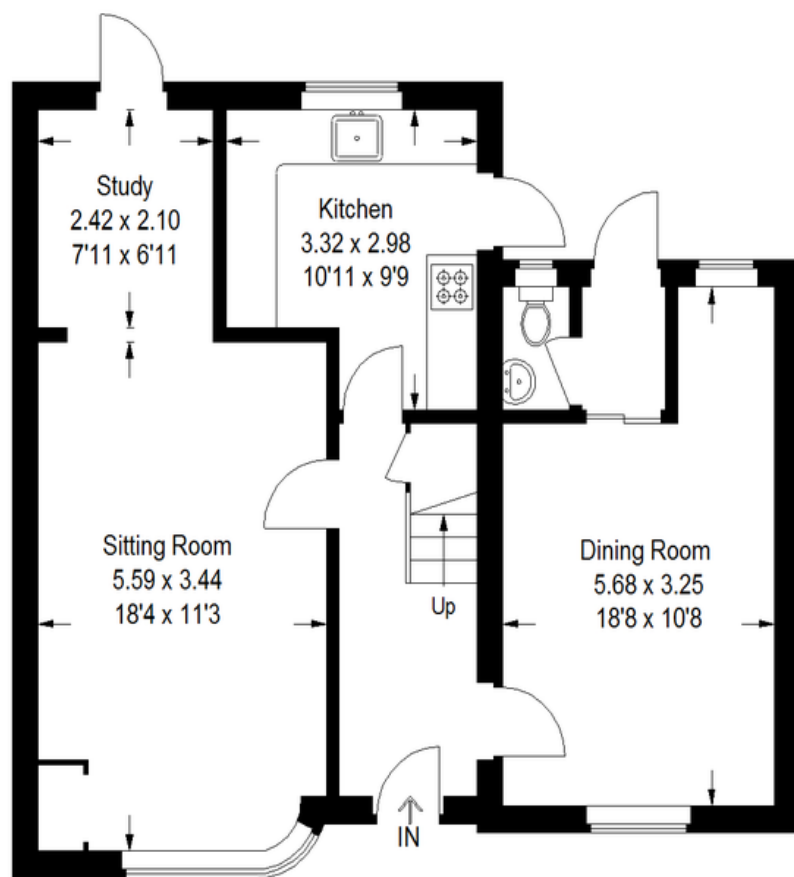
### DETAILS OF SALE

Freehold  
Hillingdon borough  
Council tax band E

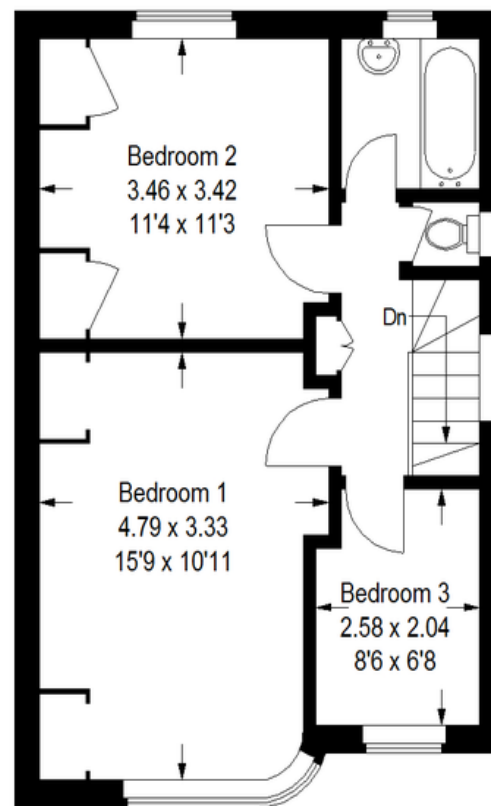




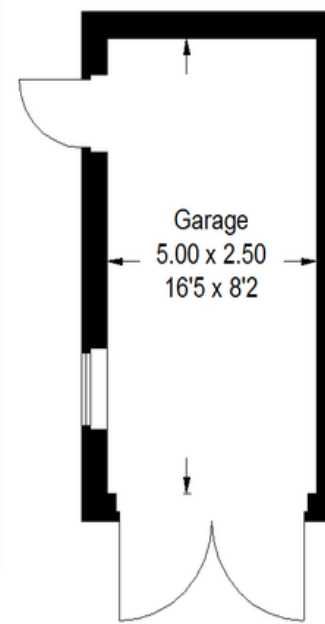




**Ground Floor**



**First Floor**



(Not Shown In Actual  
Location / Orientation)

Illustration for identification purposes only, measurements are approximate, not to scale. (ID693671)