



- TWO BEDROOMS
- ADDITIONAL LOFT ROOM
- GOOD CONDITION
- CLOSE TO ACADEMY

22 Ash Grove, Harefield, Uxbridge, UB9 6EX

Guide Price £445,000

Andrews Residential are delighted to offer to the market this well presented two bedroom (plus loft room) end of terrace family home. In our opinion the property has been lovingly updated by its current owners. Benefits include modern kitchen & bathroom, sunny aspect garden and off street parking. Early viewings advised.

Property Description

THE LOCATION

Situated within walking distance to Harefield Village centres local shops, pubs and general amenities and offering easy access by car to Denham Green's shops and mainline station, Rickmansworth, Ruislip and Uxbridge town centre. There is the benefit of a wide range of schools including the highly regarded Harefield academy

THE PROPERTY

Off the entrance hall there are doors to the through lounge, modern kitchen and conservatory/lean to. To the first floor there are two good size bedrooms and a family bathroom. To the second floor there is a loft room with eaves storage and velux style window. Benefits include modern bathroom and kitchen, double glazing and gas central heating.

OUTSIDE

To the front of the property there is off street parking, a side front door and additional door leading to the side entrance and rear garden. Outside to the rear there is a stunning landscaped garden with patio and timber built summer house.

DETAILS OF SALE

Freehold
Hillingdon Council
Sole agents





Ash Grove UB9

Approximate Gross Internal Floor Area = 99.2 sq m / 1068 sq ft

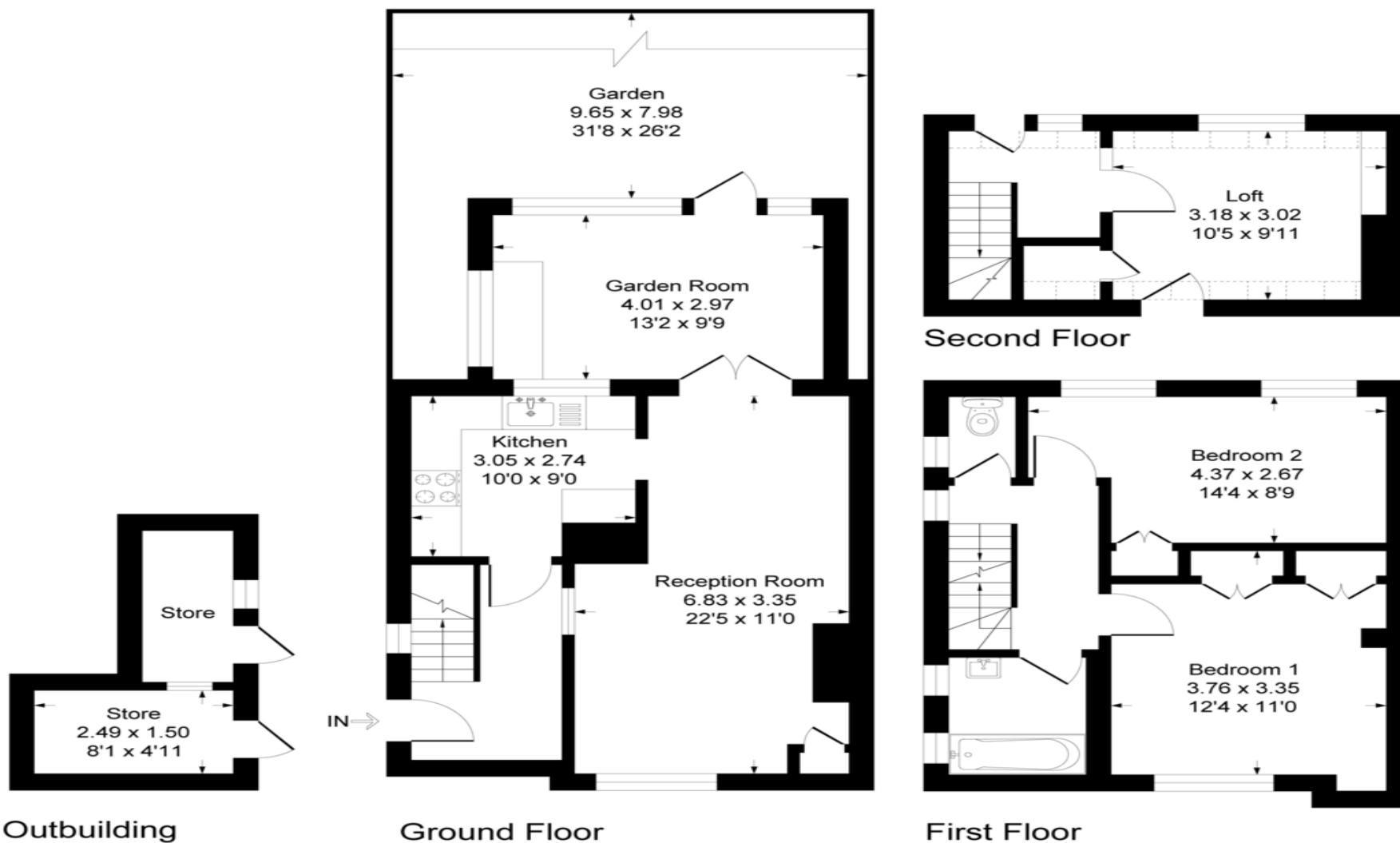


Illustration for identification purposes only, measurements are approximate, not to scale.

Hillingdon office
11 Crescent Parade
Hillingdon
UB10 OLG

Uxbridge office
41 Belmont Road
Uxbridge
UB8 1QT

Hillingdon office 01895 231311
Uxbridge office 01895 707777
info@andrewsresidential.co.uk
www.andrewsresidential.co.uk

Agents Note: Whilst every care has been taken to prepare these sales particulars, they are for guidance purposes only. All measurements are approximate and for general guidance purposes only and whilst every care has been taken to ensure their accuracy, they should not be relied upon and potential buyers are advised to recheck the measurements. Andrews Residential is a trading name of Halcledix Limited, a limited company incorporated in England and Wales under registration number 10898495