

ERITH

RSW

RIVERSIDE WEST

RIVER SIDE WEST

Introducing a new development of stylish one and two-bedroom apartments in Erith, Bexley, just steps from the river. These contemporary homes feature spacious open-plan layouts, floor-to-ceiling windows, and private outdoor spaces.

Each apartment is designed for modern living, with ample natural light and sleek finishes throughout. Residents can enjoy sweeping views from the communal roof terraces. These apartments offer a unique blend of urban convenience and scenic surroundings, creating a vibrant lifestyle in the heart of Erith.



DUAL *purpose*



Each apartment offers dedicated areas for working remotely, with abundant natural light and spaciousness to support productivity, aided by private outdoor spaces that create an open-air escape feeling.

These new apartments provide adaptable living spaces tailored for both work and relaxation within the comfort of home.

LIVING *space*





RIVERSIDE

living in

LONDON

Erith is fast becoming a sought-after destination, combining modern living with easy access to central London. Its scenic surroundings and transport links create an ideal balance between urban connectivity and natural escape.

Located along the Thames, Erith offers riverside living with newly renovated spaces like Riverside Gardens and the historic Erith Pier, perfect for outdoor leisure. The area's extensive walking and cycling routes connect directly to iconic spots such as Greenwich, Bluewater, and the Thames Barrier, allowing you to explore London's vibrant neighbourhoods with ease.

Proximity to central London enhances Erith's appeal for commuters, offering a peaceful retreat within reach of the city. With its unique blend of urban and riverside charm, Erith stands out as an exciting place to live, work, and explore.



*All you
need is just a
STONE'S
THROW
away*

beyond **RSW**

Erith offers a vibrant mix of amenities, including diverse shopping, cosy cafes, excellent restaurants, lively pubs, a local theatre, and beautiful parks, making it a welcoming place to call home.

shop & markets

The Exchange in Erith, set in a restored Victorian library, hosts community events, art workshops, and exhibitions.

Erith boasts high street shops, Riverside Shopping Centre, and convenient supermarkets.



cafés & eateries

Popular spots include The Bookstore Café, known for its artisan coffee, and Mambocino's for hearty brunches, alongside The Running Horses, a cosy pub offering classic British meals and friendly atmosphere.



relax & unwind

Enjoy the serene Riverside Gardens, Frank's Park with its woodland trails, and Crayford Marshes, a haven for birdwatchers and nature enthusiasts, offering tranquil green spaces and scenic river views.



health & fitness

Erith Leisure Centre features a swimming pool, gym, sports courts, and fitness classes, catering to all ages and fitness levels, making it a go-to spot for health and wellness activities.



ERITH
a unique riverside
HAVEN



THAMES TOWPATH



ERITH FISH SCULPTURE



ERITH PIER

Erith Pier, London's longest, reflects the area's rich maritime history, once a bustling port. The regenerated Riverside Gardens revitalise this heritage, adding landscaped spaces and recreational areas, transforming the waterfront into a lively, scenic destination for all.

EBB & FLOW

Erith offers excellent transport links, making travel into central London and across Kent convenient by train, car, bicycle, or bus – ideal for both commuters and weekend explorers.







Living at Riverside West captures the rhythm of life in Erith, where seamless travel connections bring the best of city and countryside within easy reach. By train, Erith Station's direct services get you to London Bridge in 35 minutes, perfect for daily commuters. Riverside West is just 2 stops on the train from Abbey Wood with Elizabeth Line connections, reaching Liverpool Street, Bond Street, Heathrow Airport and Reading. For shopping both Bluewater and Lakeside Shopping Centres are under half an hour away by car or why not head up to Stratford for a great day out. For road trips or exploring Kent, the A206 connects quickly to the M25. Local bus routes link Erith to nearby Bexley and surrounding areas, while cyclists can follow the Thames Path for scenic rides to Greenwich with it's historic park and beyond. These versatile transport options give you the freedom to experience both the vibrant pulse of London and the peaceful landscapes of Kent, embodying Erith's unique flow between urban energy and riverside calm.

CONNECTED LIVING






WALKING *from* RSW

-  ERITH TRAIN STATION
0.4 miles
-  RIVERSIDE GARDENS
0.3 miles
-  THE EXCHANGE
0.3 miles
-  ERITH PIER
0.5 miles
-  MORRISON'S
0.6 mile







TRAIN *from* Erith Station

-  ABBEY WOOD
6 mins
-  DARTFORD
8 mins
-  WOOLWICH ARSENAL
11 mins
-  LONDON BRIDGE
34 mins
-  GREENWICH
25 mins
-  WHITSTABLE
1hr 55 mins

CYCLING *from* RSW

-  RIVERSIDE SHOPPING CENTRE
0.8 miles
-  FRANK'S PARK
1.1 miles
-  ERITH LEISURE CENTRE
1.1 miles
-  ABBEY WOOD
2.2 miles
-  BEXLEY
4.3 miles

DRIVING *from* RSW

-  BEXLEYHEATH
4 miles
-  DARTFORD
4.1 miles
-  WOOLWICH
5.1 miles
-  LONDON CITY AIRPORT
8.0 miles
-  BLUEWATER
8.1 miles
-  LAKESIDE SHOPPING CENTRE
9.3 miles

Distances calculated using googlemaps. Train times according to National Rail enquiries

10 REASONS to move to RIVERSIDE WEST

Erith is becoming a prime choice for homebuyers seeking the perfect blend of riverside tranquility and modern convenience. From scenic waterfronts and expansive parks to exciting regeneration projects, Erith offers a peaceful, affordable haven within easy reach of London. With a strong community spirit and growing amenities, Riverside West is an ideal place to call home.

4

Vibrant regeneration

Major regeneration projects are transforming Erith, with improved parks, new shops, and rejuvenated public spaces creating a fresh, modern feel.

5

A haven from the City

Escape the noise and hustle, with green spaces, fresh air, and a community-focused atmosphere that feels miles from the urban rush.

6

Proximity to London

With direct trains to London Bridge, Cannon Street, and Charing Cross, you're well-connected for work or leisure in the city.

7

Community spirit

Erith fosters a strong sense of community, with regular events, local markets, and community hubs like The Exchange.

8

Green spaces and parks

Local parks, including Riverside Gardens and Frank's Park, offer beautiful, peaceful outdoor areas to relax, exercise, and connect with nature.

1

Riverside living

Enjoy stunning views and the tranquility of being right by the water, with easy access to Erith Pier and riverside walking trails.

2

A step up to home ownership

Riverside West offers an excellent opportunity to get onto the property ladder with more affordable prices in this up and coming part of London.

3

Stunning outdoor space

Exclusive communal south facing roof terraces at Riverside West provide residents with serene outdoor spaces with river views, ideal for relaxation and socialising.

9

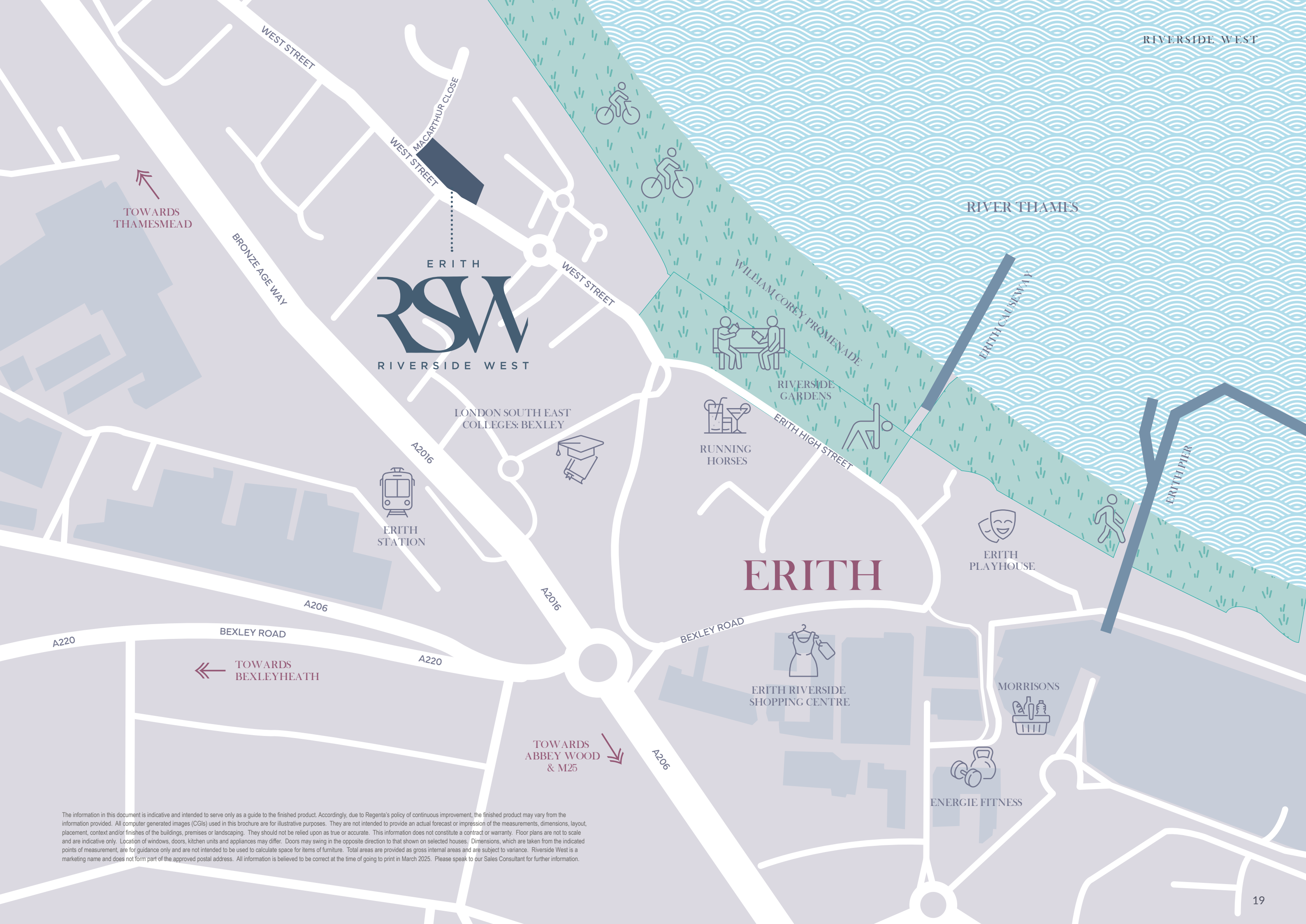
Active lifestyle

With the Thames Path and local cycling routes, Erith supports a vibrant, active lifestyle for walkers, runners, and cyclists alike.

10

Expanding amenities

A variety of shops, cafés, restaurants, and leisure facilities are nearby, providing everything you need within easy reach.



RIVERSIDE WEST

RIVER THAMES

ERITH
RSW
RIVERSIDE WEST

LONDON SOUTH EAST
COLLEGES: BEXLEY

ERITH
STATION

RUNNING
HORSES

ERITH

ERITH
PLAYHOUSE

ERITH RIVERSIDE
SHOPPING CENTRE

MORRISONS

ENERGIE FITNESS

TOWARDS
ABBAY WOOD
& M25

TOWARDS
BEXLEYHEATH

TOWARDS
THAMESMEAD

The information in this document is indicative and intended to serve only as a guide to the finished product. Accordingly, due to Regenta's policy of continuous improvement, the finished product may vary from the information provided. All computer generated images (CGIs) used in this brochure are for illustrative purposes. They are not intended to provide an actual forecast or impression of the measurements, dimensions, layout, placement, context and/or finishes of the buildings, premises or landscaping. They should not be relied upon as true or accurate. This information does not constitute a contract or warranty. Floor plans are not to scale and are indicative only. Location of windows, doors, kitchen units and appliances may differ. Doors may swing in the opposite direction to that shown on selected houses. Dimensions, which are taken from the indicated points of measurement, are for guidance only and are not intended to be used to calculate space for items of furniture. Total areas are provided as gross internal areas and are subject to variance. Riverside West is a marketing name and does not form part of the approved postal address. All information is believed to be correct at the time of going to print in March 2025. Please speak to our Sales Consultant for further information.



RELAXING *space*

These Riverside West apartments feature bright, naturally lit interiors with open-plan living areas, complemented by fully-fitted kitchens and contemporary bathrooms designed for modern comfort and style.

Kitchen

- Kitchen cupboards in Pebble grey
- Laminate worktop
- 1 ½ bowl stainless steel sink
- One multi-gang switch for all appliances
- Glass splashback
- Under wall unit lighting
- Extractor hood
- Integrated oven, hob, fridge freezer & dishwasher

Bathroom

- Contemporary white sanitaryware
- 1700mm x 700mm bath
- Glass bath screen
- Shower head, rail and riser
- Porcelanosa Madagascar natural floor tiles
- Porcelanosa Madagascar natural wall tiling
- Heated towel rail
- Bathroom mirror
- Apartments with en-suites feature a full shower enclosure
- Chrome toilet roll holder

Heating & Electrical

- Shaver socket to the bathroom
- LED downlights to kitchen, hallway & bathroom
- Energy efficient pendent lights to lounge and bedroom
- Underfloor heating
- Digital aerial installed to enable Freeview
- Satellite installed to enable Sky Q
- NIBE unit in the hallway cupboard and thermostats located in principle rooms

General

- 5-Panel internal doors
- Front hinged wardrobes to master bedroom
- Vinyl flooring to kitchen, lounge and hallways
- Carpet to the bedroom
- Smoke alarm
- Audio/Visual Door Entry System
- Washer dryer



The specification details contained in this brochure are correct at the date of print but may vary as building work progresses. Images are representative only and are from a previous Site Sales development. The specification is not intended to form part of any offer, contract, warranty or representation and should not be relied upon as a statement or representation of fact. March 2025.

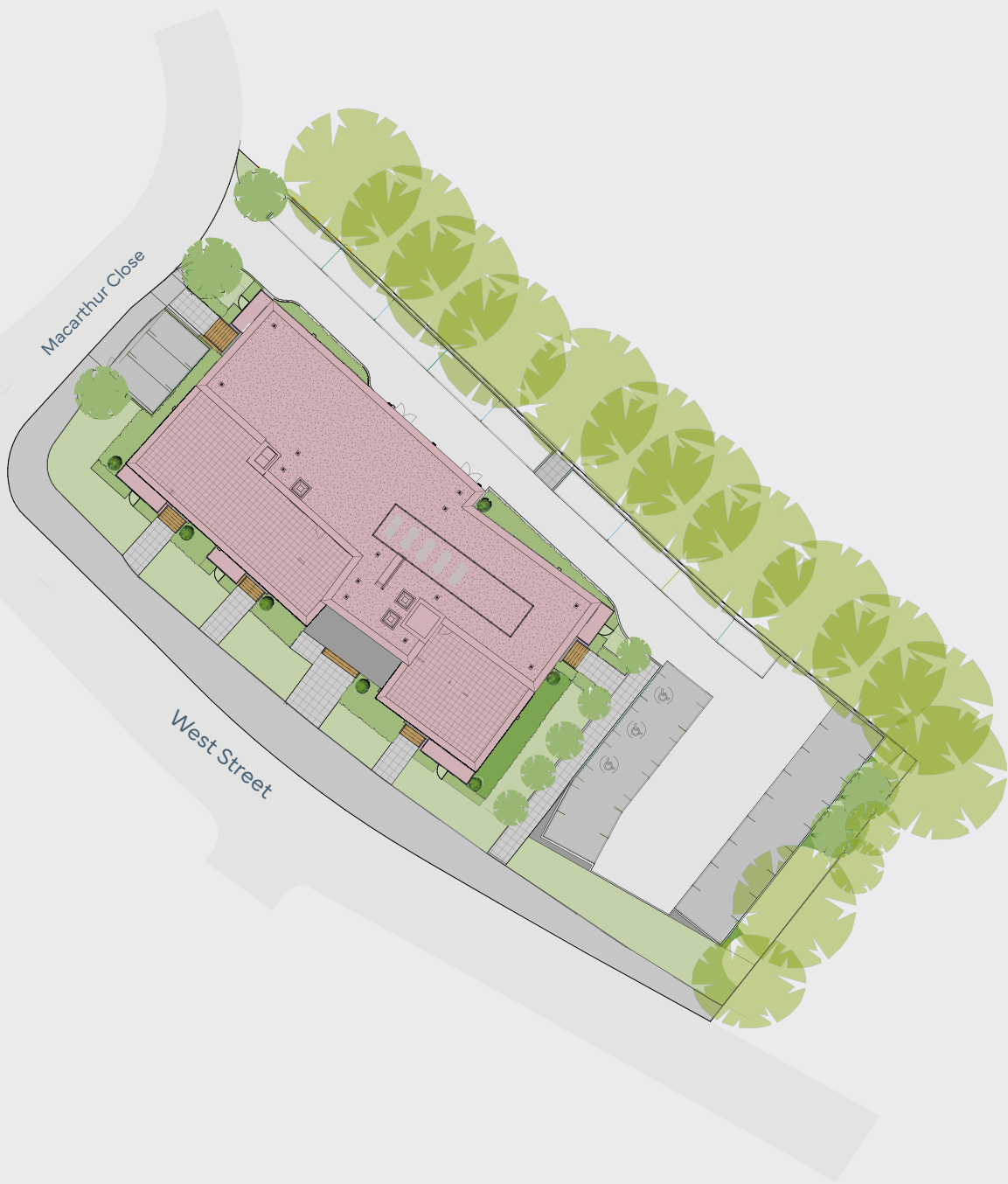
BREATHING *space*

Riverside West's south facing communal roof terraces offer a unique vantage point to enjoy expansive river views, creating a perfect spot to unwind or recharge. Thoughtfully landscaped, these spaces invite residents to savour quiet moments outdoors without leaving home, blending natural beauty with a contemporary setting.

The terraces are designed to encourage a sense of community, providing ample seating and gathering areas where neighbours can connect, relax, and enjoy scenic surroundings together.



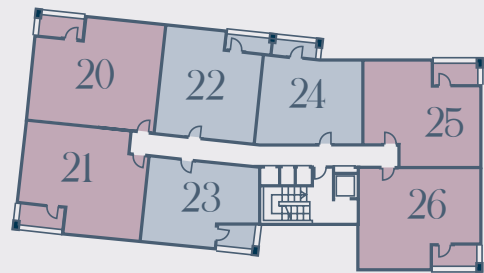
SITE *plan*



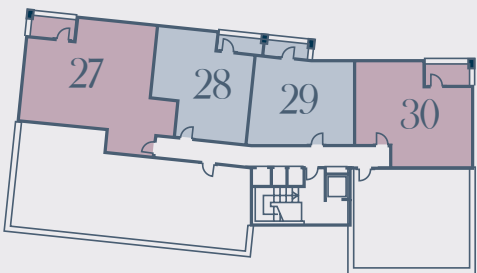
The above site plan is for illustrative purposes only. The landscaping, boundaries and positions of roads and footpaths and other facilities or amenities may change as the development proceeds. March 2025. Please speak to our Sales Consultant for further information.



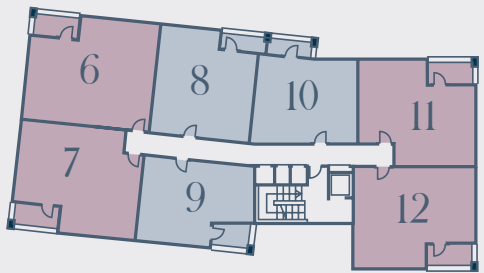
PLOT *locator*



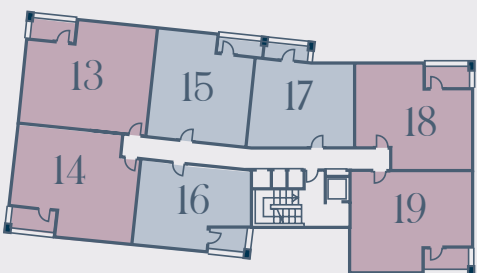
THIRD FLOOR



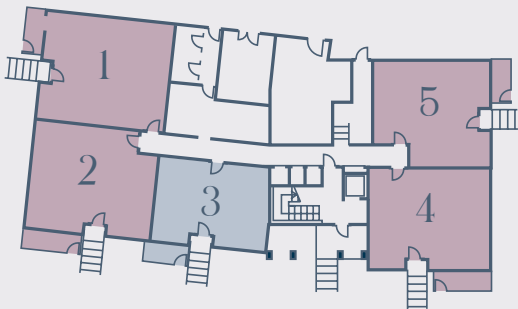
FOURTH FLOOR



FIRST FLOOR



SECOND FLOOR



GROUND FLOOR

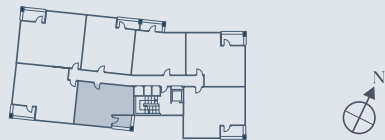
KEY

- One Bedroom Apartments
- Two Bedroom Apartments

Point from which maximum dimensions are measured. Dimensions are intended for guidance only. The developer reserves the right to vary as necessary to complete works. All measurements and areas may vary by approximately 5%. External space is indicative only. We operate a policy of continuous product development and features may, therefore, vary from time to time. This information does not constitute a contract, part of a contract or warranty. They are not intended to be used for carpet sizes, appliance sizes or items of furniture.



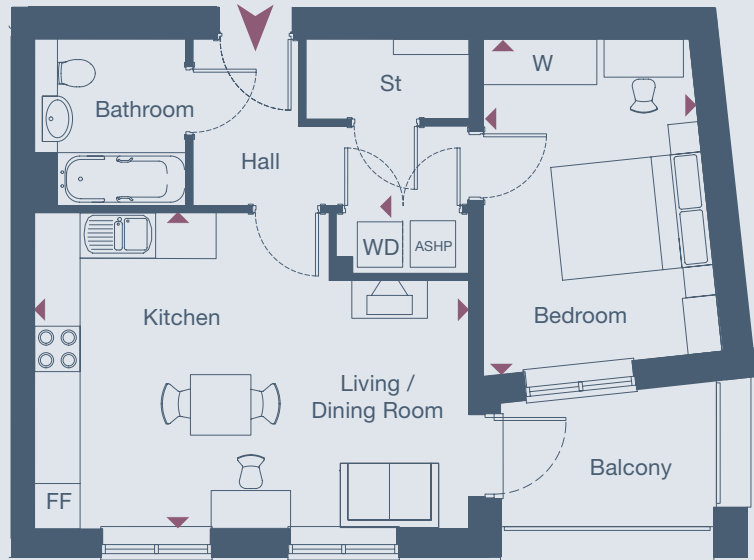
ONE BEDROOM *apartments*



PLOT 23 THIRD FLOOR

PLOT 16 SECOND FLOOR

PLOT 9 FIRST FLOOR



dimensions

TOTAL AREA: 51 SQ M 538 SQ FT

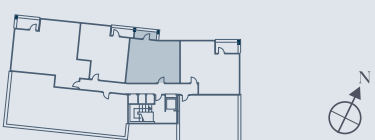
	Length x Width	Length x Width
Living / Dining / Kitchen	5.81m x 4.22m	19' 1" x 13' 10"
Bedroom	4.46m x 2.87m	14' 8" x 9' 5"

- KEY**
- FF - Fridge / Freezer
 - WD - Washer / Dryer
 - W - Wardrobe
 - St - Store
 - ASHP - Air Source Heat Pump

Point from which maximum dimensions are measured. Dimensions are intended for guidance only. The developer reserves the right to vary as necessary to complete works. All measurements and areas may vary by approximately 5%. External space is indicative only. We operate a policy of continuous product development and features may, therefore, vary from time to time. This information does not constitute a contract, part of a contract or warranty. They are not intended to be used for carpet sizes, appliance sizes or items of furniture.



ONE BEDROOM *apartments*



PLOT 29 FOURTH FLOOR

PLOT 24 THIRD FLOOR

PLOT 17 SECOND FLOOR

PLOT 10 FIRST FLOOR



dimensions

TOTAL AREA: 51 SQ M 538 SQ FT

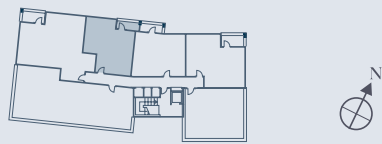
	Length x Width	Length x Width
Living / Dining / Kitchen	6.86m x 4.27m	22' 6" x 14' 0"
Bedroom	4.33m x 3.33m	14' 2" x 10' 11"

- KEY**
- FF - Fridge / Freezer
 - WD - Washer / Dryer
 - W - Wardrobe
 - St - Store
 - ASHP - Air Source Heat Pump

Point from which maximum dimensions are measured. Dimensions are intended for guidance only. The developer reserves the right to vary as necessary to complete works. All measurements and areas may vary by approximately 5%. External space is indicative only. We operate a policy of continuous product development and features may, therefore, vary from time to time. This information does not constitute a contract, part of a contract or warranty. They are not intended to be used for carpet sizes, appliance sizes or items of furniture.



ONE BEDROOM *apartment*



PLOT 28 FOURTH FLOOR



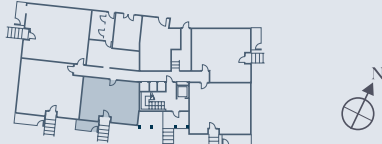
dimensions

TOTAL AREA: 54 SQ M 581 SQ FT

	Length x Width	Length x Width
Living / Dining / Kitchen	6.32m x 3.13m	20' 9" x 10' 3"
Bedroom	4.59m x 3.39m	15' 1" x 11' 2"

- KEY
- FF - Fridge / Freezer
 - WD - Washer / Dryer
 - W - Wardrobe
 - St - Store
 - ASHP - Air Source Heat Pump

ONE BEDROOM *apartment*



PLOT 3 GROUND FLOOR



dimensions

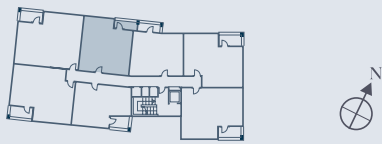
TOTAL AREA: 54 SQ M 581 SQ FT

	Length x Width	Length x Width
Living / Dining / Kitchen	6.53m x 3.44m	21' 5" x 11' 3"
Bedroom	4.20m x 3.96m	13' 9" x 3' 0"

- KEY
- FF - Fridge / Freezer
 - WD - Washer / Dryer
 - W - Wardrobe
 - St - Store
 - ASHP - Air Source Heat Pump



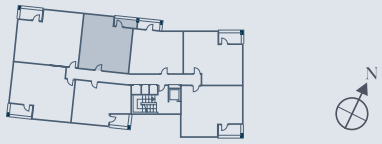
ONE BEDROOM *apartment*



PLOT 8 FIRST FLOOR

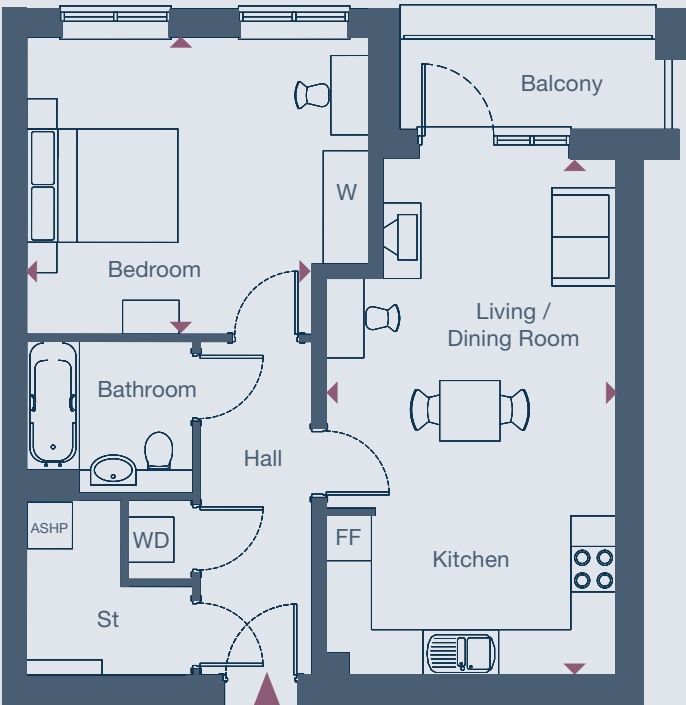


ONE BEDROOM *apartments*



PLOT 22 THIRD FLOOR

PLOT 15 SECOND FLOOR



dimensions

TOTAL AREA: 60 SQ M 646 SQ FT

KEY

- FF - Fridge / Freezer
- WD - Washer / Dryer
- W - Wardrobe
- St - Store
- ASHP - Air Source Heat Pump

	Length x Width	Length x Width
Living / Dining / Kitchen	6.82m x 3.81m	22' 5" x 12' 6"
Bedroom	4.51m x 3.93m	14' 9" x 12' 11"

dimensions

TOTAL AREA: 60 SQ M 646 SQ FT

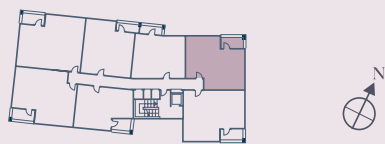
KEY

- FF - Fridge / Freezer
- WD - Washer / Dryer
- W - Wardrobe
- St - Store
- ASHP - Air Source Heat Pump

	Length x Width	Length x Width
Living / Dining / Kitchen	6.85m x 3.83m	22' 6" x 12' 7"
Bedroom	3.95m x 3.77m	12' 11" x 12' 5"



TWO BEDROOM *apartments*



PLOT 30 FOURTH FLOOR

PLOT 25 THIRD FLOOR

PLOT 18 SECOND FLOOR

PLOT 11 FIRST FLOOR



dimensions

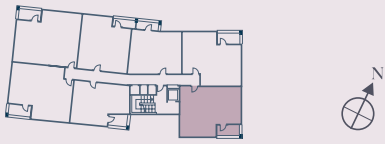
PLOTS 11, 18 & 30 TOTAL AREA: 66 SQ M 710 SQ FT

PLOTS 25 TOTAL AREA: 62 SQ M 667 SQ FT

	Length x Width	Length x Width
Living / Dining / Kitchen	6.32m x 3.84m	20' 9" x 12' 7"
Bedroom 1	5.08m x 2.77m	16' 8" x 9' 1"
Bedroom 2	3.23m x 2.34m	10' 7" x 7' 8"

KEY
FF - Fridge / Freezer
WD - Washer / Dryer
W - Wardrobe
St - Store
ASHP - Air Source Heat Pump

TWO BEDROOM *apartments*



PLOT 26 THIRD FLOOR

PLOT 19 SECOND FLOOR

PLOT 12 FIRST FLOOR



dimensions

PLOTS 12 & 19 TOTAL AREA: 66 SQ M 710 SQ FT

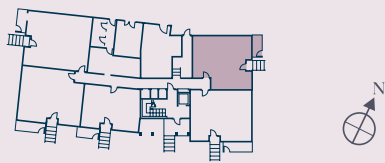
PLOTS 26 TOTAL AREA: 72 SQ M 775 SQ FT

	Length x Width	Length x Width
Living / Dining / Kitchen	5.78m x 3.76m	19' 0" x 12' 4"
Bedroom 1	4.62m x 2.77m	15' 2" x 9' 1"
Bedroom 2	2.83m x 2.61m	9' 4" x 8' 7"

KEY
FF - Fridge / Freezer
WD - Washer / Dryer
W - Wardrobe
St - Store
ASHP - Air Source Heat Pump



TWO BEDROOM *apartments*



PLOT 5 GROUND FLOOR



dimensions

TOTAL AREA: 66 SQ M 710 SQ FT

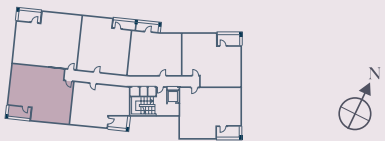
	Length x Width	Length x Width
Living / Dining / Kitchen	6.38m x 3.86m	20' 11" x 12' 8"
Bedroom 1	4.27m x 2.75m	14' 0" x 9' 0"
Bedroom 2	3.92m x 2.63m	12' 10" x 8' 8"

- KEY**
- FF - Fridge / Freezer
 - WD - Washer / Dryer
 - W - Wardrobe
 - St - Store
 - ASHP - Air Source Heat Pump

Point from which maximum dimensions are measured. Dimensions are intended for guidance only. The developer reserves the right to vary as necessary to complete works. All measurements and areas may vary by approximately 5%. External space is indicative only. We operate a policy of continuous product development and features may, therefore, vary from time to time. This information does not constitute a contract, part of a contract or warranty. They are not intended to be used for carpet sizes, appliance sizes or items of furniture.



TWO BEDROOM *apartments*



PLOT 21 THIRD FLOOR

PLOT 14 SECOND FLOOR

PLOT 7 FIRST FLOOR



dimensions

TOTAL AREA: 71 SQ M 764 SQ FT

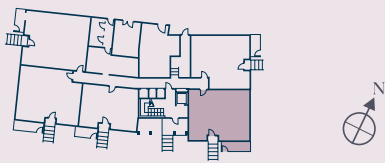
	Length x Width	Length x Width
Living / Dining / Kitchen	6.35m x 4.64m	20' 10" x 15' 3"
Bedroom 1	4.59m x 3.12m	15' 1" x 10' 3"
Bedroom 2	4.59m x 2.67m	15' 1" x 8' 9"

- KEY**
- FF - Fridge / Freezer
 - WD - Washer / Dryer
 - W - Wardrobe
 - St - Store
 - ASHP - Air Source Heat Pump

Point from which maximum dimensions are measured. Dimensions are intended for guidance only. The developer reserves the right to vary as necessary to complete works. All measurements and areas may vary by approximately 5%. External space is indicative only. We operate a policy of continuous product development and features may, therefore, vary from time to time. This information does not constitute a contract, part of a contract or warranty. They are not intended to be used for carpet sizes, appliance sizes or items of furniture.



TWO BEDROOM *apartments*



PLOT 4 GROUND FLOOR



dimensions

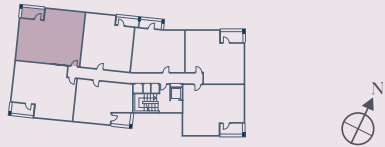
TOTAL AREA: 73 SQ M 786 SQ FT

	Length x Width	Length x Width
Living / Dining / Kitchen	5.39m x 4.87m	17' 8" x 16' 0"
Bedroom 1	5.10m x 2.90m	16' 9" x 9' 6"
Bedroom 2	4.41m x 2.80m	14' 6" x 9' 2"

KEY

- FF - Fridge / Freezer
- WD - Washer / Dryer
- W - Wardrobe
- St - Store
- ASHP - Air Source Heat Pump

TWO BEDROOM *apartments*



PLOT 20 THIRD FLOOR

PLOT 13 SECOND FLOOR

PLOT 6 FIRST FLOOR



dimensions

TOTAL AREA: 71 SQ M 764 SQ FT

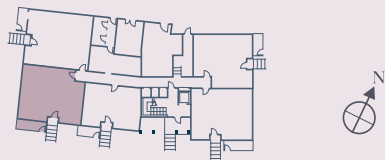
	Length x Width	Length x Width
Living / Dining / Kitchen	6.39m x 4.64m	20' 11" x 15' 3"
Bedroom 1	4.34m x 3.35m	14' 3" x 1' 0"
Bedroom 2	4.34m x 2.70m	14' 3" x 8' 10"

KEY

- FF - Fridge / Freezer
- WD - Washer / Dryer
- W - Wardrobe
- St - Store
- ASHP - Air Source Heat Pump



TWO BEDROOM *apartments*



PLOT 2 GROUND FLOOR



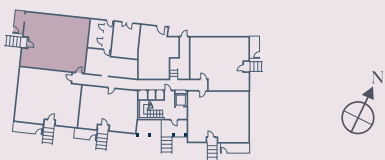
dimensions

TOTAL AREA: 73 SQ M 786 SQ FT

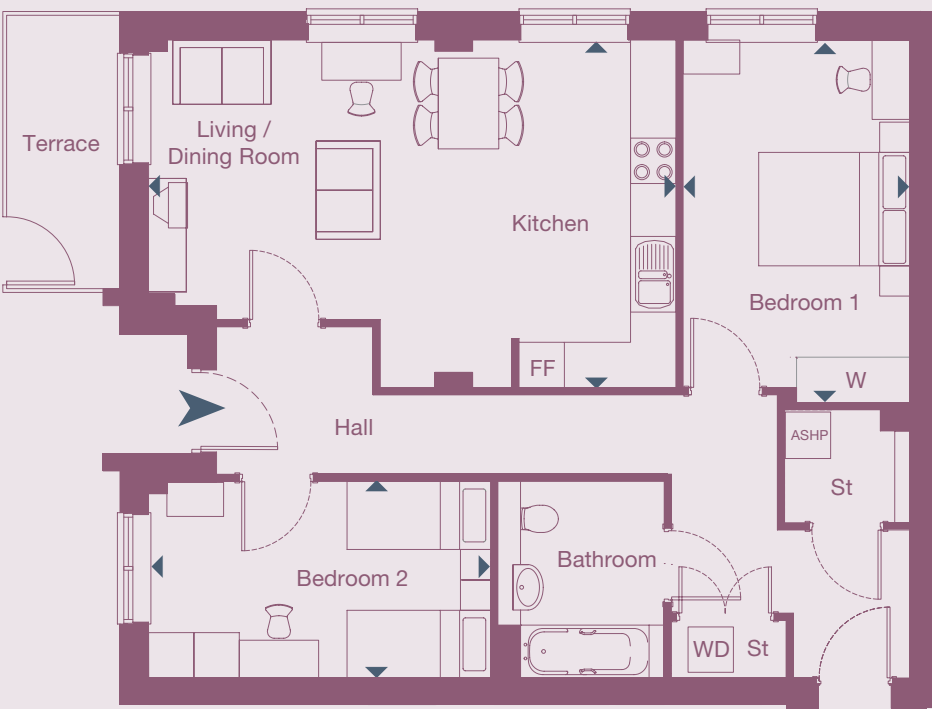
	Length x Width	Length x Width
Living / Dining / Kitchen	5.15m x 4.72m	16' 11" x 15' 6"
Bedroom 1	4.57m x 3.24m	15' 0" x 10' 8"
Bedroom 2	3.84m x 3.14m	12' 7" x 10' 4"

- KEY**
- FF - Fridge / Freezer
 - WD - Washer / Dryer
 - W - Wardrobe
 - St - Store
 - ASHP - Air Source Heat Pump

TWO BEDROOM *apartments*



PLOT 1 GROUND FLOOR



dimensions

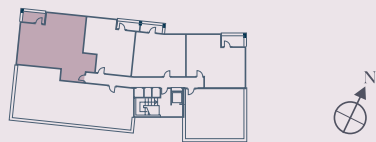
TOTAL AREA: 79 SQ M 850 SQ FT

	Length x Width	Length x Width
Living / Dining / Kitchen	6.93m x 4.56m	22' 9" x 15' 0"
Bedroom 1	4.83m x 3.05m	15' 10" x 10' 0"
Bedroom 2	4.56m x 2.60m	15' 0" x 8' 6"

- KEY**
- FF - Fridge / Freezer
 - WD - Washer / Dryer
 - W - Wardrobe
 - St - Store
 - ASHP - Air Source Heat Pump



TWO BEDROOM *apartments*



PLOT 27 FOURTH FLOOR



dimensions

TOTAL AREA: 87 SQ M 936 SQ FT

	Length x Width	Length x Width
Living / Dining / Kitchen	6.51m x 6.35m	21' 4" x 20' 10"
Bedroom 1	4.85m x 3.00m	15' 11" x 9' 10"
Bedroom 2	4.85m x 3.00m	15' 11" x 9' 10"

- KEY**
- FF - Fridge / Freezer
 - WD - Washer / Dryer
 - W - Wardrobe
 - St - Store
 - ASHP - Air Source Heat Pump

Point from which maximum dimensions are measured. Dimensions are intended for guidance only. The developer reserves the right to vary as necessary to complete works. All measurements and areas may vary by approximately 5%. External space is indicative only. We operate a policy of continuous product development and features may, therefore, vary from time to time. This information does not constitute a contract, part of a contract or warranty. They are not intended to be used for carpet sizes, appliance sizes or items of furniture.





0344 748 0063

riversidewest-erith.co.uk

RIVERSIDE WEST

River Haven Court, Erith, Bexley DA8 1AF

