

T TOWER



47 Pepys Court 20 Love Lane, London, SE18 6GZ
£1,750 Per Calendar Month



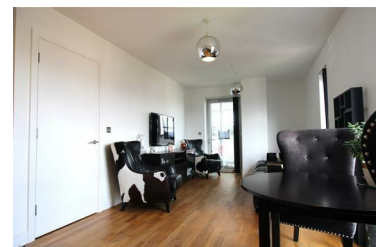
Tower Properties are pleased to offer this charming 2-bedroom flat situated in the heart of SE18.

Residents of Pepys Court enjoy access to communal areas and the convenience of being close to local shops, parks, and transport links. This location ensures easy access to amenities and attractions in the area.

This modern apartment offers comfortable living in a highly sought-after location. Featuring contemporary design, spacious interiors, and access to amenities, it's complemented by its convenient placement on the 15th floor, providing lovely views of the surrounding area. Plus, with lift access, convenience is assured for all residents.

Step into this inviting apartment and discover a spacious and well-designed living space. The open-plan living/dining area offers plenty of room with

- Two large double bedrooms
- Integrated kitchen appliances
- 15th floor providing lovely views of the surrounding area
- Convenient access to local amenities
- Bathtub with overhead shower
- Private balcony
- Optional parking space available
- Lift access
- Open plan living/dining area
- Easy access to transport links



18 Aldermans Hill Palmers Green, London, N13 4PN

Tel: 020 8920 9820 Email: reception@towerestates.net <http://tower.london/>