

The friendly & helpful estate agents.

ashleigh
stone



Argyll Road, SS0 7HN
5 Bedrooms
House
£600,000

To arrange a viewing
call 01702 480 666

ashleighstone.co.uk

FOR SALE

Argyll Road, SS0 7HN

£600,000

A Refined Edwardian Sanctuary South of the London Road Step beyond the ordinary and discover a residence where timeless character and contemporary luxury blend seamlessly—a five-bedroom Edwardian masterpiece, enviably positioned south of the London Road in one of Westcliff's handiest locations.

This is not simply a home; it is an invitation to experience a lifestyle defined by elegance, comfort, and a sense of belonging. From the moment you arrive, the property's presence is unmistakable. The handsome façade, framed by mature trees and manicured landscaping, hints at the grandeur within.

Off-street parking for three vehicles ensures convenience, while the welcoming entrance hall, adorned with original cornicing and gleaming tiled floors, sets a tone of understated sophistication. The journey through this remarkable home unfolds with a sense of discovery. To the front, the bay-fronted lounge bathes in natural light, its feature fireplace and soft carpeting creating an inviting retreat for quiet evenings or lively conversation.

Venture further and the heart of the home reveals itself: a magnificent, extended family and dining room, where double-glazed windows and patio doors blur the boundary between indoors and the tranquil rear garden. Here, entertaining becomes effortless, whether hosting intimate dinners or grand celebrations. Culinary pursuits are elevated in the bespoke kitchen, where cream cabinetry, stone-inspired worktops, and a suite of integrated appliances cater to the most discerning chef. The adjoining utility room and pantry offer practicality without compromise, while a stylish ground-floor shower room ensures guests are always accommodated with grace.

Ascending to the first floor, five beautifully proportioned bedrooms await, each a private sanctuary. The principal suite, with its generous bay window, captures the morning sun, while the remaining rooms offer flexibility for family, guests, or a dedicated home office. The remodelled bathroom suite is a study in modern luxury, featuring a freestanding bath, bespoke tiling, and a heated towel rail—an indulgent space to unwind at day's end.

Outside, the rear garden is a secluded haven, thoughtfully designed for both relaxation and play. Paved terraces, mature borders, and a charming shed create a backdrop for al fresco dining or peaceful reflection, while the attached lean-to offers abundant storage for life's essentials. Beyond the gates, the neighbourhood beckons.

A short stroll leads to the golden sands and invigorating sea air of Westcliff's celebrated beaches, while the vibrant parade of local boutiques, cafés, and restaurants ensures every convenience is within reach. For commuters, Westcliff station is moments away, placing central London comfortably within your grasp. Families will appreciate the proximity to outstanding schools and verdant parks, fostering a sense of community and well-being.

Here, every detail has been considered, every comfort anticipated—a home not just to inhabit, but to cherish. We invite you to experience this exceptional property firsthand. Viewing is essential to truly appreciate the rare blend of character, space, and location that defines this wonderful home. Welcome to a new chapter—welcome to ARGYLL ROAD.

To arrange a viewing of this super property call 01702 480 666
or send us an email to property@ashleighstone.co.uk

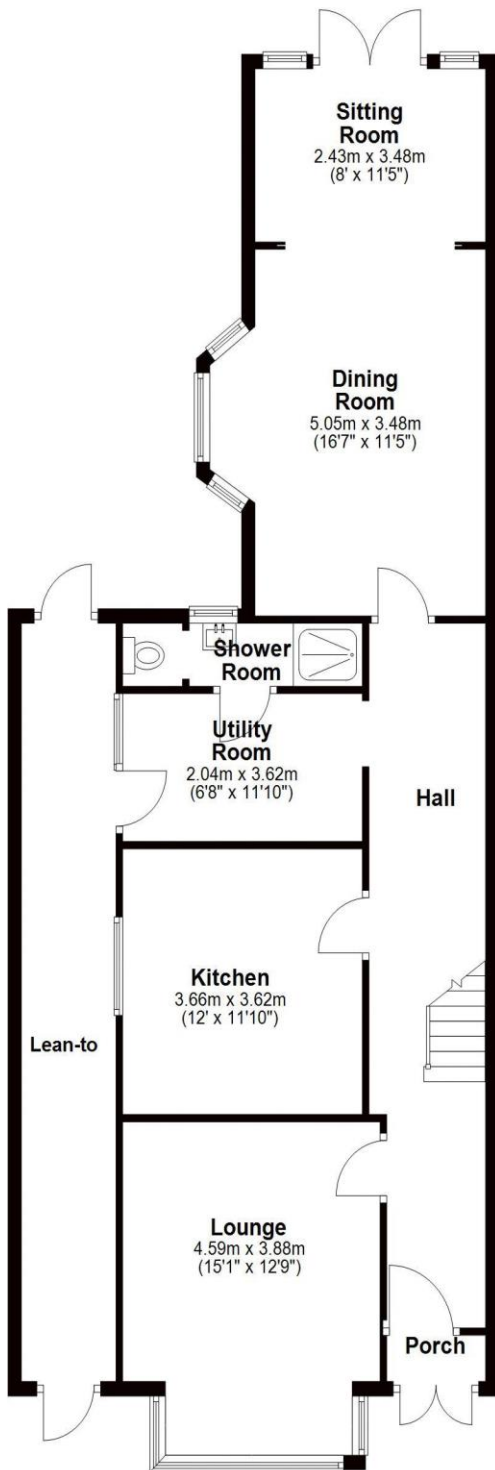


5 BEDROOMS / SEMI DETACHED HOUSE / OFF STREET PARKING / BALCONY

Floor plans

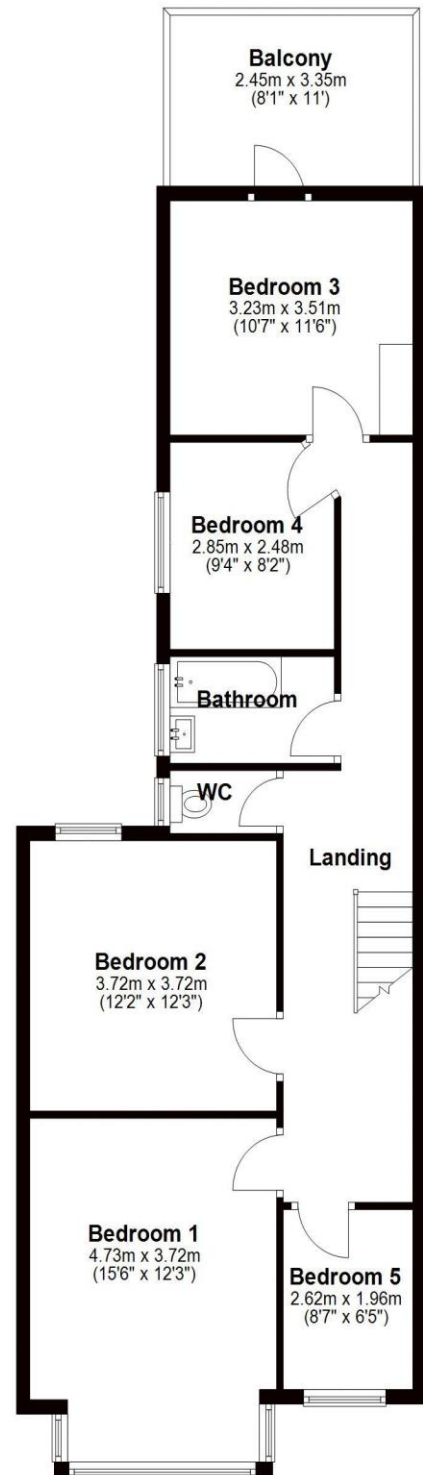
Ground Floor

Approx. 103.9 sq. metres (1117.8 sq. feet)



First Floor

Approx. 78.6 sq. metres (846.5 sq. feet)



Total area: approx. 182.5 sq. metres (1964.3 sq. feet)

ashleigh stone

107 Broadway, Leigh-on-Sea, Essex SS9 1PG
01702 480 666 / property@ashleighstone.co.uk

 facebook.com/ashleighstoneproperty