

The friendly & helpful estate agents.

ashleigh
stone



Optical Court Kenway, SS2 5DZ
2 Bedrooms
Second Floor Flat
Offers Over £175,000

To arrange a viewing
call 01702 480 666

ashleighstone.co.uk

FOR SALE

Optical Court Kenway, SS2 5DZ

Offers Over £175,000

Optical Court, Kenway, Southend on Sea. A stylish and connected retreat for first time buyers or discerning investors. Perfectly positioned in a modern development just moments from Southend's vibrant city centre, this beautifully presented two bedroom apartment at Optical Court delivers effortless contemporary living with unbeatable convenience.

Located on the second floor of this well maintained residential block, the apartment has just been freshly decorated throughout and features brand new carpets, offering a truly move in ready home with a bright, clean and modern aesthetic.

The dual aspect open plan living and kitchen area is both practical and welcoming, ideal for everything from laid back evenings to entertaining friends. Sleek cabinetry, integrated appliances and stylish finishes define the kitchen space, while the living area is filled with natural light.

The apartment comprises two well proportioned double bedrooms, each offering comfort and flexibility whether used as restful retreats, guest accommodation or a dedicated work from home space. A modern three piece bathroom in crisp, neutral tones complements the living space, while ample built in storage ensures a clutter free, low maintenance environment.

Further features include: Fresh décor and new carpets throughout, double glazing for sound insulation and warmth and electric heating. One allocated off street parking space. Secure entry and well maintained communal areas.

Location highlights: Positioned in a sought after enclave of Kenway, the flat is a commuter's dream, just a short stroll from Prittlewell Station with direct trains to London Liverpool Street. The A127 is easily accessible for those travelling by car, while the surrounding area is rich in amenities. Explore the shops, cafés, and restaurants of Southend city centre. Unwind in nearby Priory Park or take a weekend walk along the famous Southend seafront. A fantastic first time purchase or a rewarding investment opportunity, Optical Court offers the perfect combination of style, practicality and location. Refreshed and ready to enjoy from day one.

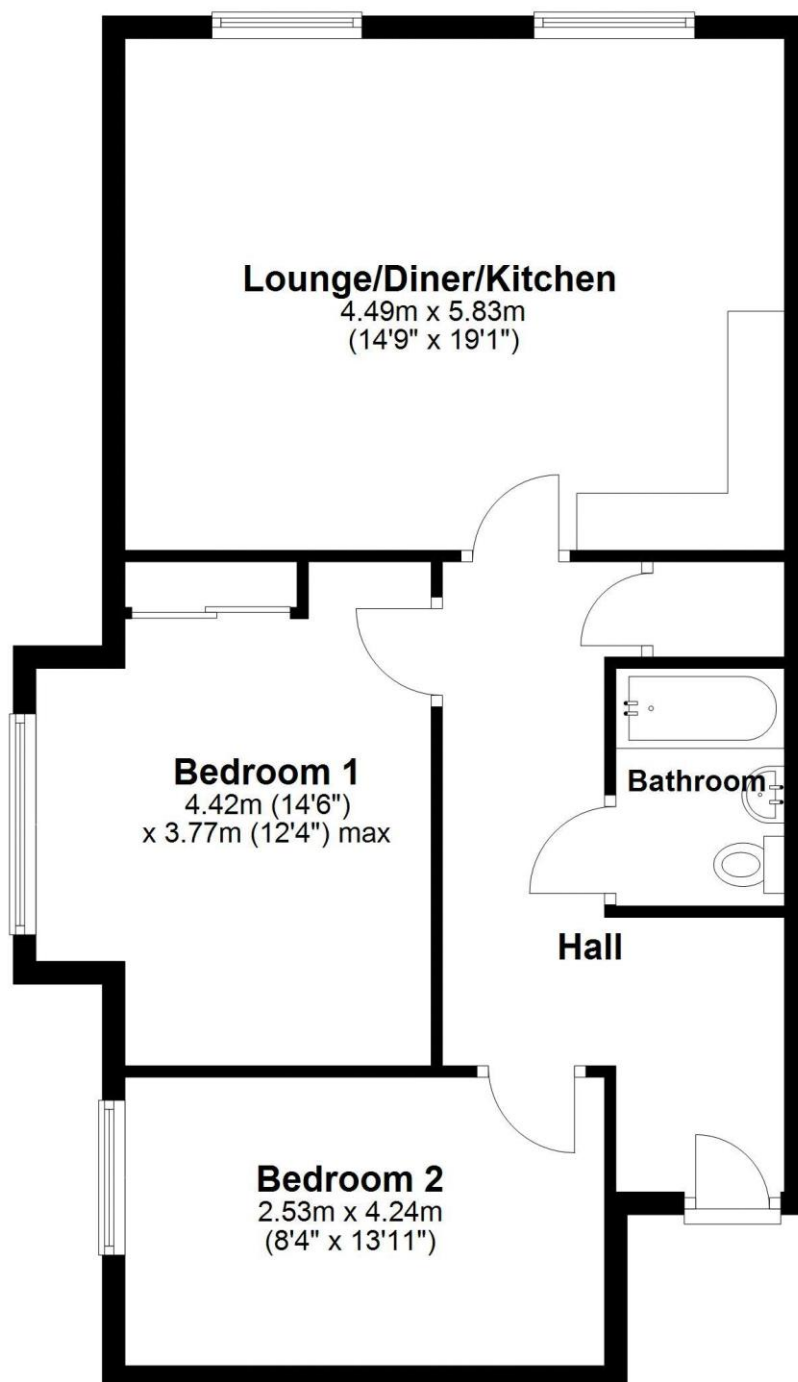
To arrange a viewing of this super property call 01702 480 666
or send us an email to property@ashleighstone.co.uk



2 BEDROOMS / SECOND FLOOR FLAT / CENTRAL LOCATION

Second Floor

Approx. 68.1 sq. metres (733.2 sq. feet)



Total area: approx. 68.1 sq. metres (733.2 sq. feet)

ashleigh stone

107 Broadway, Leigh-on-Sea, Essex SS9 1PG
01702 480 666 / property@ashleighstone.co.uk