

The friendly & helpful estate agents.

ashleigh  
stone



Westborough Road, SS0 9PX  
4 Bedrooms  
End Terrace House  
Offers Over £485,000

To arrange a viewing  
call 01702 480 666

[ashleighstone.co.uk](http://ashleighstone.co.uk)

## FOR SALE

Westborough Road, SS0 9PX

Offers Over £485,000

Ashleigh Stone Estate Agents are pleased to offer this superb, character FOUR bedroom family home. The property offers many character features and generous living space with three reception rooms, newly fitted kitchen, ground floor shower room, three bedrooms are double and one single, modern family bathroom. Outside the property has the advantage of a double garage. Well presented and available with no onward chain the property is well situated for local shops, amenities, local transport links, schools and Southend City centre.

### Hallway

Front door, coved cornice to smooth plastered ceiling, picture rail, radiator, stairs rising to the first floor, wood effect flooring and doors to lounge and second reception room.

### Lounge 16' 8" x 13' 6" (5.08m x 4.11m)

Double glazed bay window to the front, coved cornice and rose to smooth plastered ceiling, picture rail, period style feature fireplace with surround, mantle and inset picture tiles, radiator and wood effect flooring.

### Second Reception 14' 4" x 9' 11" (4.37m x 3.02m)

Two double glazed windows to the side, coved cornice and rose to ceiling, picture rail, period style feature fireplace with surround, mantle and inset picture tiles, radiator and wood effect flooring.

### Third Reception Room 14' 3" x 11' 4" (4.34m x 3.45m)

Double glazed window to the side, coved cornice and rose to smooth plastered ceiling, picture rail, period style feature fireplace with surround, mantle and inset picture tiles, radiator, storage cupboard, wood effect flooring and door to.

### Shower Room 5' 4" x 5' 6" (1.62m x 1.68m)

Obscure double glazed window to the rear, smooth plastered ceiling with inset down lights, Quadrant shower with thermostatic shower, wash hand basin, close coupled WC, chrome towel radiator, tiled splash backs and tiled flooring.

### Kitchen 11' 7" x 10' 3" (3.53m x 3.12m)

Double glazed window to the rear, double glazed door to the side leading to the garden, coved cornice to smooth plastered ceiling, wall and base level units with granite effect work tops, inset stainless sink drainer, tiled

splash backs, concealed combi boiler, stainless steel six ringed range style cooker with stainless steel extractor over and tiled flooring.

### Landing

#### Bedroom One 17' 8" x 14' 2" max (5.38m x 4.31m)

Double glazed bay window to the front, double glazed windows to the rear and side, coved cornice to smooth plastered ceiling, picture rail and radiator.

#### Bedroom Two 11' 6" x 12' 6" (3.50m x 3.81m)

Double glazed window to the side, picture rail and radiator.

### Bathroom

Two obscure double glazed windows to the side, smooth plastered ceiling with inset down lights, panelled bath with mixer tap, shower attachment and shower screen, wash hand basin inset to vanity cupboard, low level WC, tiled splash backs, chrome towel radiator and vinyl wood effect flooring.

#### Bedroom Three 11' 6" x 10' 4" (3.50m x 3.15m)

Double glazed window to the rear, coved cornice to smooth plastered ceiling and radiator.

#### Bedroom Four 8' 5" x 5' 10" (2.56m x 1.78m)

Double glazed window to the side, picture rail and radiator.

### Exterior

Paved rear and side garden with pedestrian access to the DETACHED DOUBLE GARAGE which has vehicle access via two up and over doors.

To arrange a viewing of this super property call 01702 480 666  
or send us an email to [property@ashleighstone.co.uk](mailto:property@ashleighstone.co.uk)



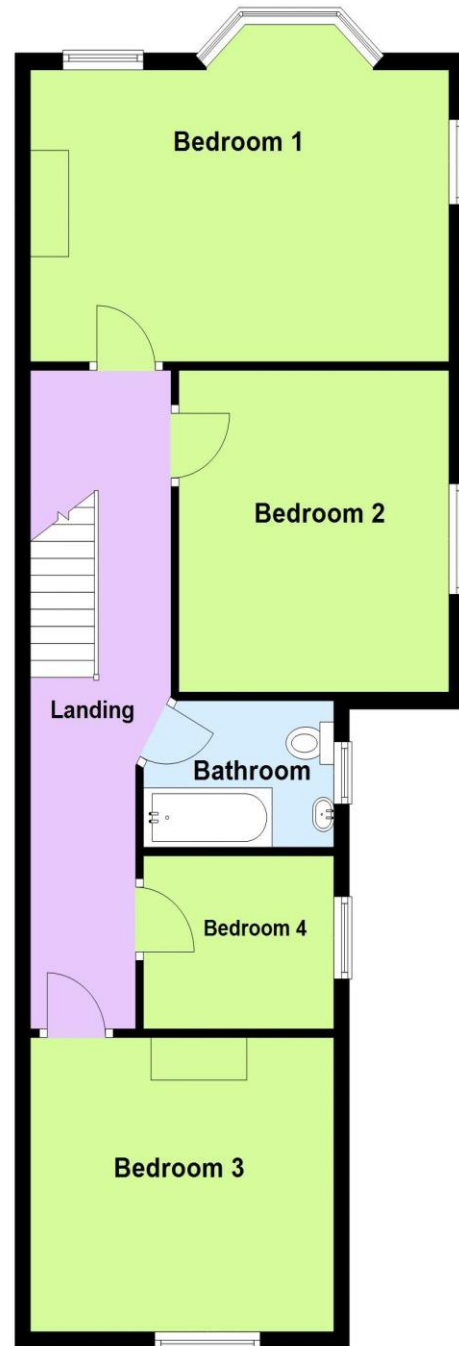
4 BEDROOMS / SEMI DETACHED HOUSE / DOUBLE GARAGE / NO ONWARD CHAIN

## Floor plans

Ground Floor



First Floor



**ashleigh stone**

107 Broadway, Leigh-on-Sea, Essex SS9 1PG  
01702 480 666 / [property@ashleighstone.co.uk](mailto:property@ashleighstone.co.uk)

 [facebook.com/ashleighstoneproperty](https://facebook.com/ashleighstoneproperty)