

The friendly & helpful estate agents.

ashleigh
stone



Scarborough Drive, SS9 3EE
1 Bedroom
First Floor Flat
£247,500

To arrange a viewing
call 01702 480 666

ashleighstone.co.uk

FOR SALE

Scarborough Drive, SS9 3EE

£247,500

Ashleigh Stone are thrilled to market this spacious one bedroom first floor flat with the added benefit of a garage and being offered with no onward chain. The apartment is entered via its own front door with a bright staircase leading up to the landing. The accommodation comprises a spacious lounge to the front with a beautiful bay window, kitchen, good size double bedroom, bathroom and separate toilet. The property also has access to the loft space and the shared drive provides access to the garage. Viewings are highly recommended.

Lobby

Accessed via front exterior door with stairs rising to.

First Floor Landing

Opaque double glazed window to the flank, access to loft, radiator and doors off.

Kitchen 7' 10" x 8' (2.39m x 2.44m)

Double glazed bay window to the front, smooth ceiling, wall and base level units with rolled edge work tops over, single sink drainer, tiled splash backs, four ringed gas hob with built under oven and space for appliances.

Lounge 13' 8" x 14' 9" . bay (4.16m x 4.49m)

Double glazed bay window to the front, smooth ceiling, feature fireplace and radiator.

Bedroom 11' 8" x 11' 10" (3.55m x 3.60m)

Double glazed window to the rear, textured ceiling and radiator.

Separate WC

Opaque double glazed window to the rear and low level WC.

Bathroom 8' 6" x 6' 4" (2.59m x 1.93m)

Opaque double glazed window to the rear, smooth ceiling, panelled bath with shower over, pedestal wash hand basin, storage cupboard, radiator and part tiled to walls.

Exterior

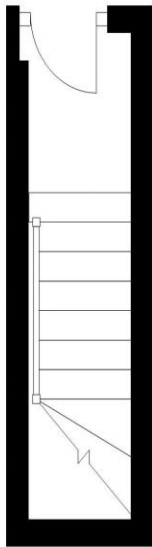
Enclosed front garden, shared drive leading to the garage.

To arrange a viewing of this super property call 01702 480 666
or send us an email to property@ashleighstone.co.uk

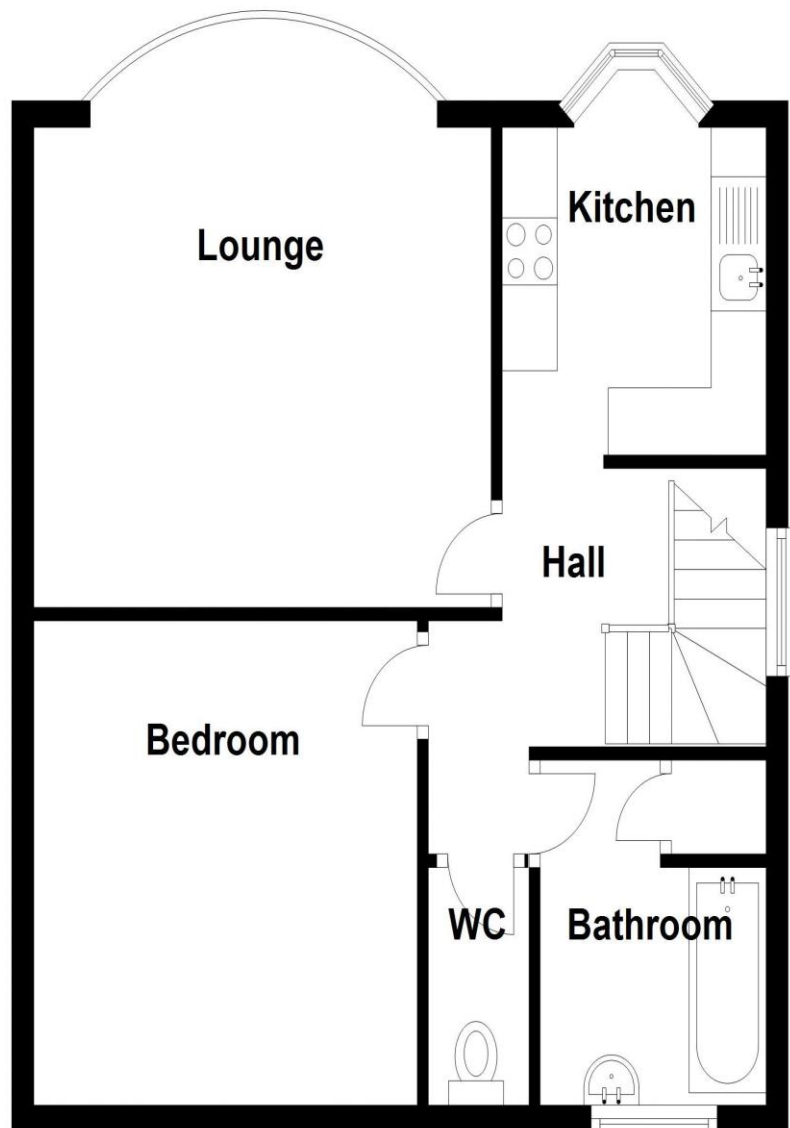


1 BEDROOM / FIRST FLOOR FLAT / GARAGE / NO ONWARD CHAIN

Ground Floor
Approx. 3.4 sq. metres (36.4 sq. feet)



First Floor
Approx. 49.1 sq. metres (528.4 sq. feet)



Total area: approx. 52.5 sq. metres (564.8 sq. feet)

ashleigh stone

107 Broadway, Leigh-on-Sea, Essex SS9 1PG
01702 480 666 / property@ashleighstone.co.uk