

woodcockholmes.co.uk

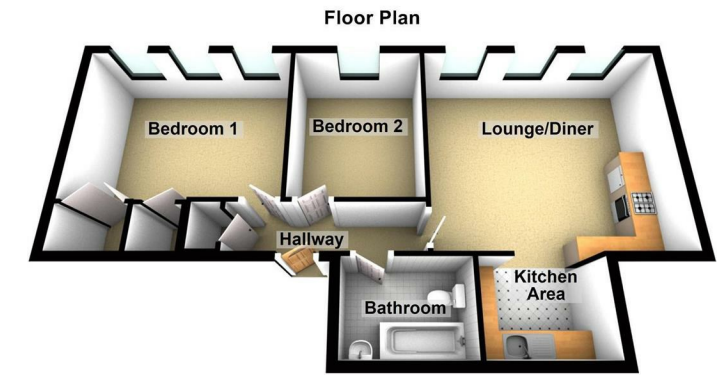
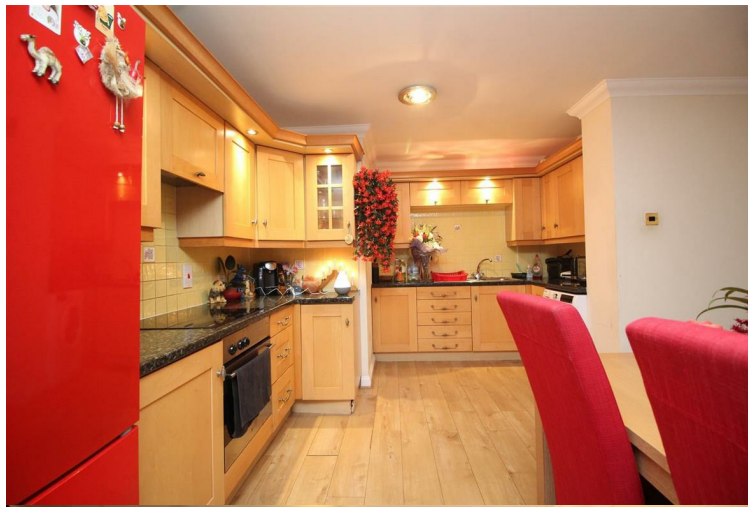


**Woodcock Holmes**  
First Floor Offices, 4 Office Village  
Hampton, Peterborough PE7 8GX  
01733 303111  
info@woodcockholmes.co.uk



These particulars do not constitute part or all of an offer of contract. The measurements are supplied for guidance only and as such must be considered incorrect. Potential buyers are advised to re-check measurements before committing to any expense. Woodcock Holmes have not tested any apparatus, equipment, services, fixtures or fittings and it is in the buyer's interest to check the working condition of appliances. Floorplans are for illustration purposes only and are not to scale. Woodcock Holmes has sought not to verify the legal title of the property. Buyers not obtain such verification from their solicitors.


**9 St James House**  
Peterborough, PE1 1WJ  
£950 Per Month



**9 St James House  
Peterborough  
PE1 1WJ**

- DOUBLE GLAZED
- WALKING DISTANCE TO CENTRE
- ELECTRIC HEATING
- OPEN PLAN LOUNGE AND KITCHEN
- 2 BEDROOMS

Viewings: By appointment  
£950 Per Month

Energy Efficiency Rating		
	Current	Potential
Very energy efficient - lower running costs		
(92 plus) <b>A</b>		
(81-91) <b>B</b>		
(69-80) <b>C</b>	<b>76</b>	<b>83</b>
(55-68) <b>D</b>		
(39-54) <b>E</b>		
(21-38) <b>F</b>		
(1-20) <b>G</b>		
Not energy efficient - higher running costs		
<b>England &amp; Wales</b>	EU Directive 2002/91/EC 	
Environmental Impact (CO <sub>2</sub> ) Rating		
	Current	Potential
Very environmentally friendly - lower CO <sub>2</sub> emissions		
(92 plus) <b>A</b>		
(81-91) <b>B</b>		
(69-80) <b>C</b>		
(55-68) <b>D</b>		
(39-54) <b>E</b>		
(21-38) <b>F</b>		
(1-20) <b>G</b>		
Not environmentally friendly - higher CO <sub>2</sub> emissions		
<b>England &amp; Wales</b>	EU Directive 2002/91/EC 