



Montrose Place, London, SW1X 7DU

£11,000,000





Montrose Place, London, SW1X 7DU

**£11,000,000**

An exceptional lateral ground floor apartment (circa 3,567 sq ft) situated in one of the most pre-eminent and prestigious recent developments in Knightsbridge and Belgravia, with the benefit of 24 hour security and concierge, and private underground parking for two cars.

Montrose Place offers fully serviced living and privacy in an exceptional location on a quiet street between the eastern terrace of Belgrave Square and Grosvenor Place.



## Description



## Situation

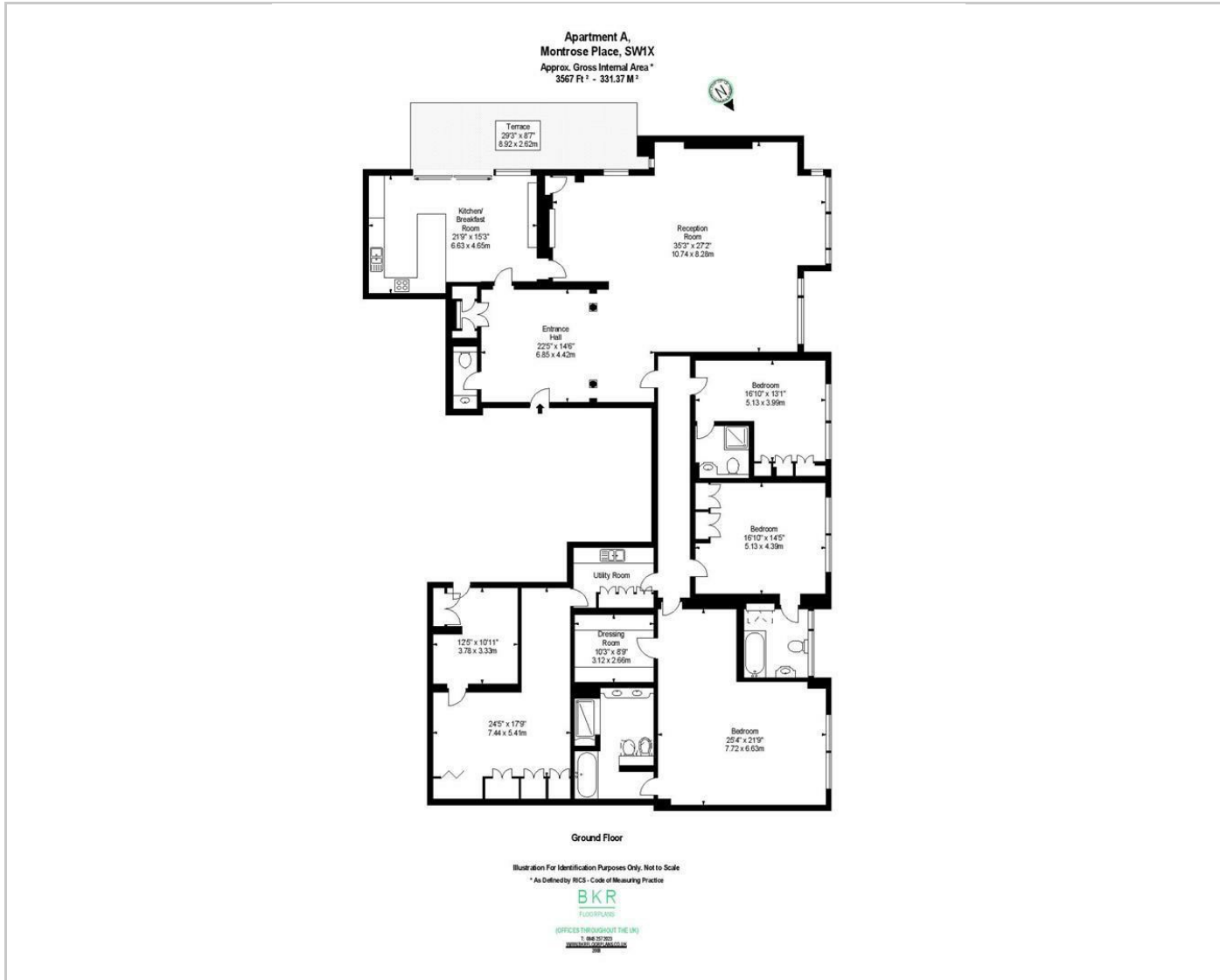


null

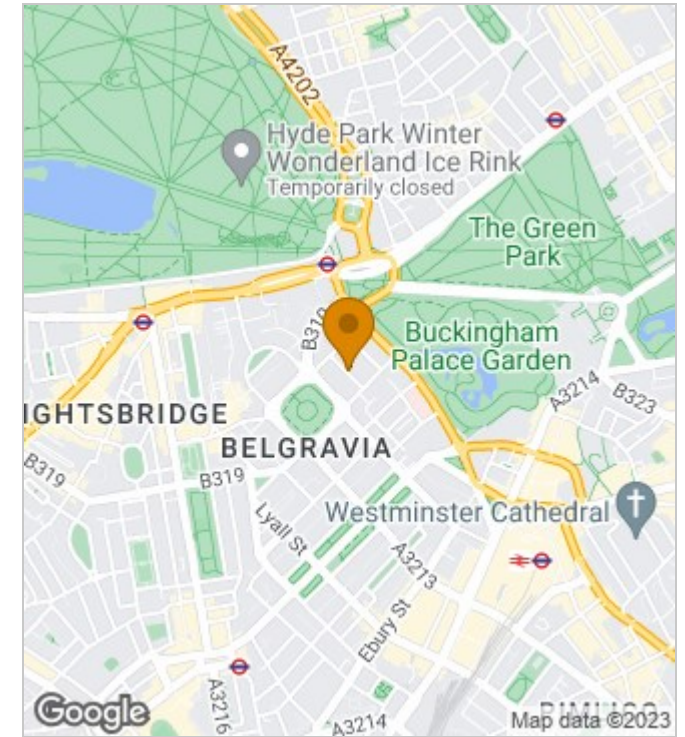
Council Tax Band: H

Available:

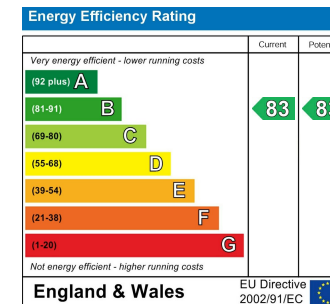
## Floor Plans



## Area Map



## Energy Performance Graph



These particulars, whilst believed to be accurate are set out as a general outline only for guidance and do not constitute any part of an offer or contract. Intending purchasers should not rely on them as statements of representation of fact, but must satisfy themselves by inspection or otherwise as to their accuracy. No person in this firm's employment has the authority to make or give any representation or warranty in respect of the property.