



Cheyne Place, Chelsea, London SW3 4HJ  
£1,200 Per Week



## Cheyne Place, Chelsea, London SW3 4HJ

**£1,200 Per Week**

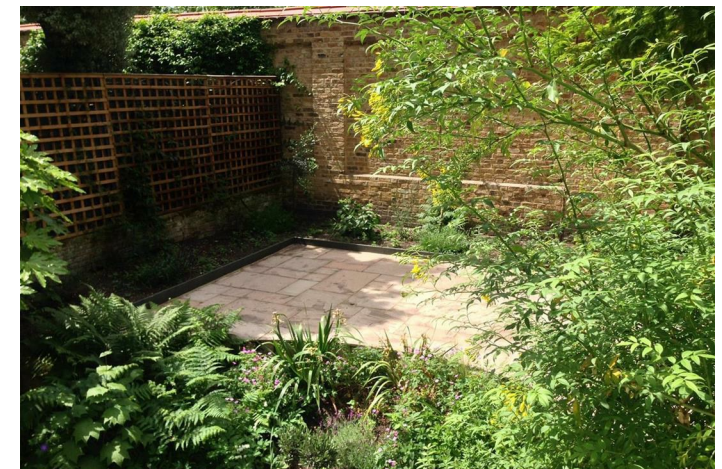
A charming two bedroom garden flat with spacious rooms and period features. The property benefits from wood floors throughout and a large private garden. Cheyne Place is close to all the amenities of the Kings Road and is a short walk to Battersea Park. The buildings lift and boiler services are located within the property which will require mandatory access through out the tenancy. £200 per month will be discounted from the rent for this inconvenience.

## Description

Kitchen  
Reception  
Dinning Room  
Two bedrooms  
Two bathrooms  
Study  
Garden  
Deposit: £7200

## Situation

Cheyne Place is close to all the amenities of the Kings Road and is a short walk to Battersea Park and the gardens of the Royal Hospital.

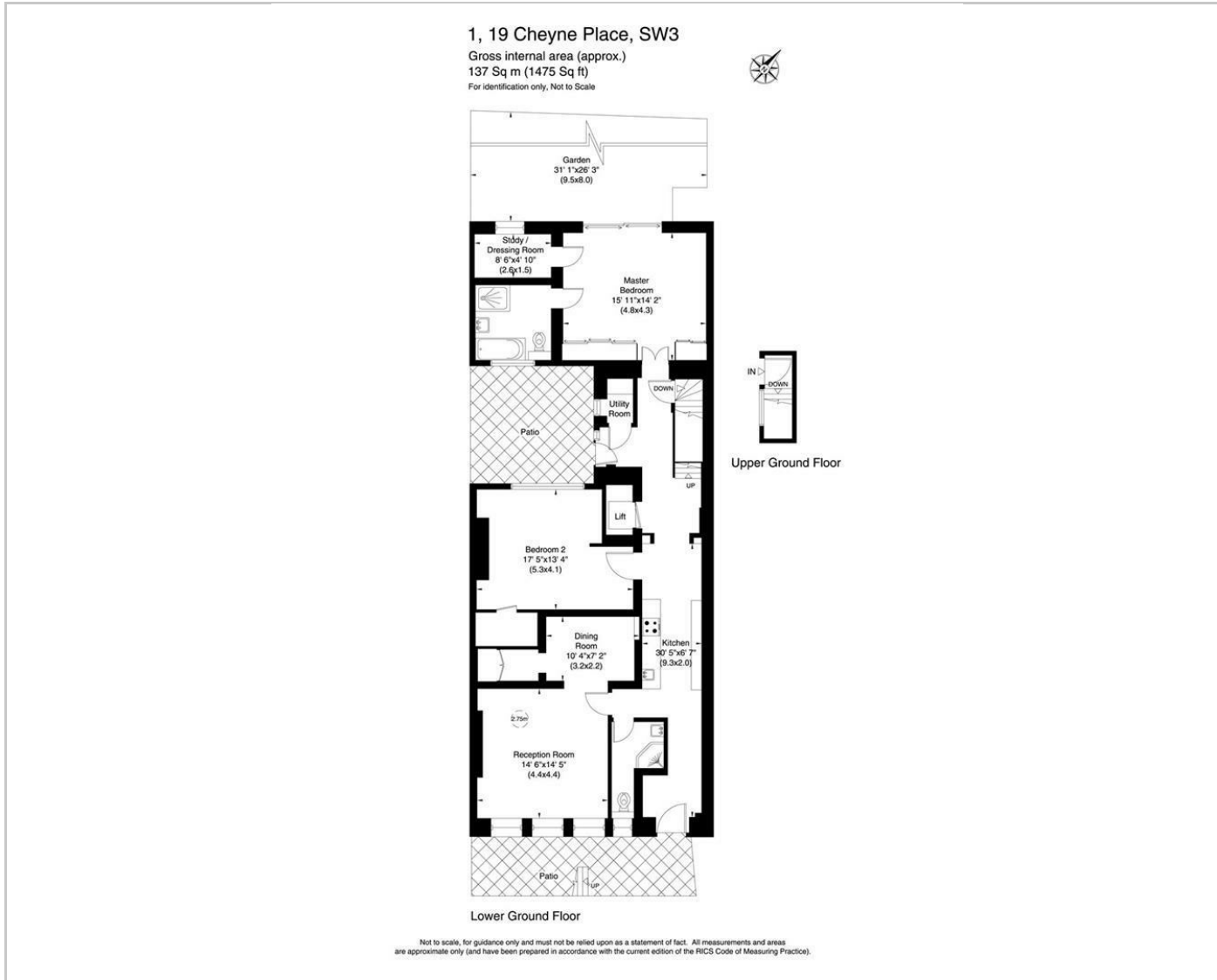


Unfurnished

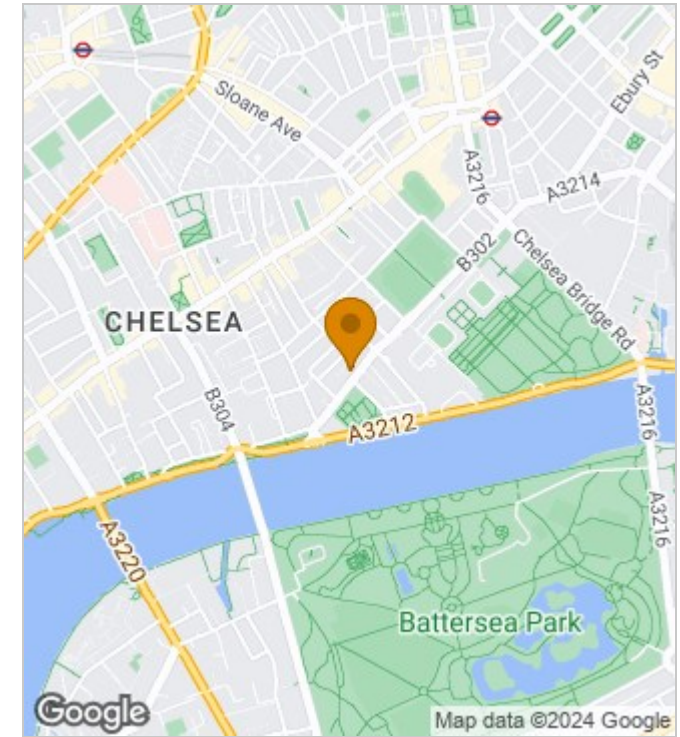
Council Tax Band:

Available: 27th May 2024

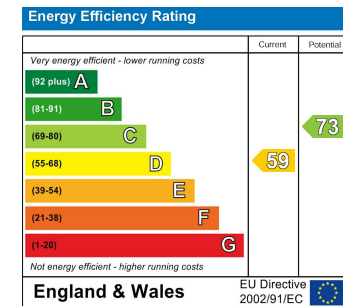
# Floor Plans



# Area Map



# Energy Performance Graph



These particulars, whilst believed to be accurate are set out as a general outline only for guidance and do not constitute any part of an offer or contract. Intending purchasers should not rely on them as statements of representation of fact, but must satisfy themselves by inspection or otherwise as to their accuracy. No person in this firm's employment has the authority to make or give any representation or warranty in respect of the property.