



Cheyne Place, SW3 4HJ

£1,900 Per Week



Cheyne Place, SW3 4HJ

£1,900 Per Week

A superb two bedroom appartement that has been newly refurbished. The property benefits from wood floors throughout with great natural light and a private terrace. The property also benefits from stunning views over the Chelsea Physic Gardens. Cheyne Place is close to all the amenities of the Kings Road and is a short walk to Battersea Park and the gardens of the Royal Hospital.

Description

Open plan kitchen/ dining room
Two en-suite double bedrooms
Large reception room
Cloakroom
Utility room
Private Terrace
Deposit: £11,400

Situation

Cheyne Place is close to all the amenities of the Kings Road and is a short walk to Battersea Park and the gardens of the Royal Hospital.

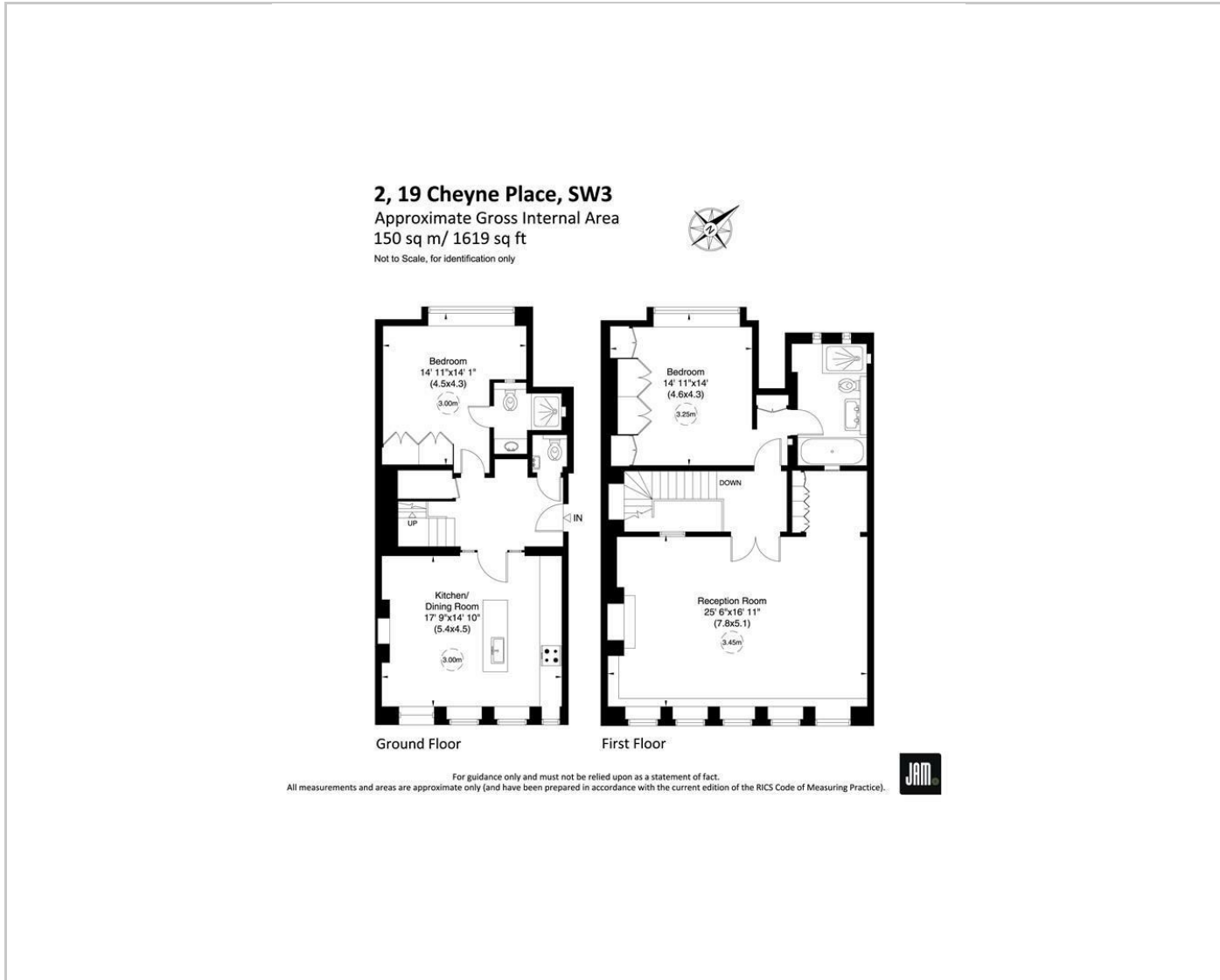


Unfurnished

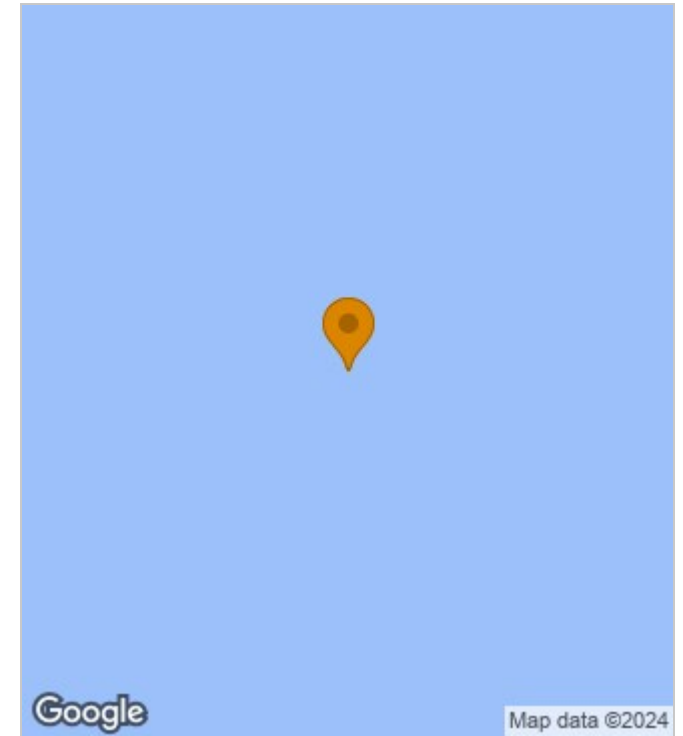
Council Tax Band: H

Available: 3rd June 2024

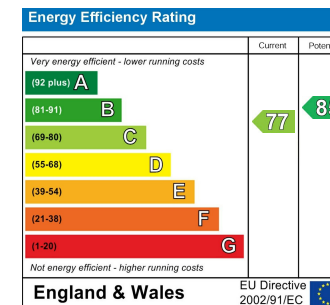
Floor Plans



Area Map



Energy Performance Graph



These particulars, whilst believed to be accurate are set out as a general outline only for guidance and do not constitute any part of an offer or contract. Intending purchasers should not rely on them as statements of representation of fact, but must satisfy themselves by inspection or otherwise as to their accuracy. No person in this firm's employment has the authority to make or give any representation or warranty in respect of the property.