



ENNISMORE GARDENS, LONDON SW7 1AJ

A light 2 bedroom top floor flat (4th floor without a lift) in a popular Knightsbridge garden square with a bright west facing reception room overlooking the communal gardens. The flat has a separate kitchen, bathroom, and the two bedrooms quietly situated at the rear.

Ennismore Gardens is a sought-after garden square close to Hyde Park and all the facilities of Knightsbridge.

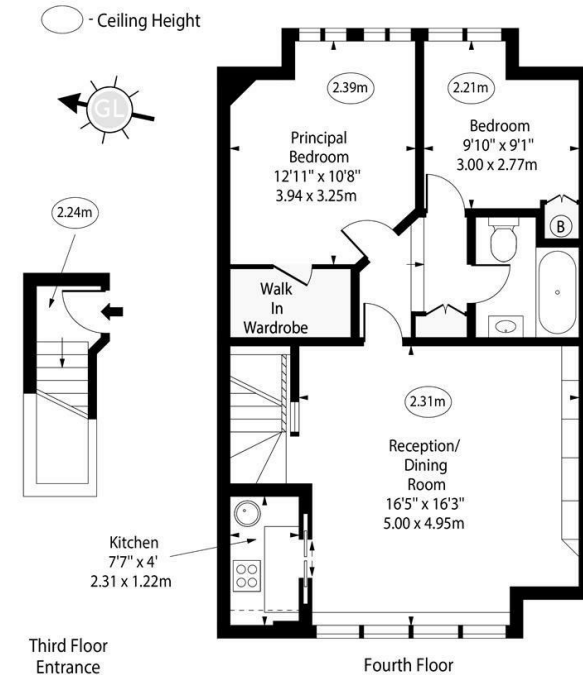
South Kensington and Knightsbridge Underground Stations are nearby.

Accommodation & Amenities

- 2 Bedrooms
- Bathroom
- Reception Room
- Kitchen
- Communal Gardens
- EPC Rating G
- New lease with approx.150 years unexpired

£875,000

Ennismore Gardens, SW7



Approx Gross Internal Area 685 Sq Ft - 63.64 Sq M

For Illustration Purposes Only - Not To Scale
www.goldlens.co.uk
Ref. No. 020643M

Approximate Gross Internal Area
685.00 sq ft

Energy Efficiency Rating		Current	Potential
Very energy efficient - lower running costs			
(92 plus) A			
(81-91) B			
(69-80) C			71
(55-68) D			
(39-54) E			
(21-38) F		20	
(1-20) G			
Not energy efficient - higher running costs			
England & Wales		EU Directive 2002/91/EC	

440 Kings Road, London, SW10 0LH

02073512383

sales@aylesford.com

www.aylesford.com

AYLESFORD
INTERNATIONAL

These plans are for guidance only and must not be relied upon as statement of fact. Attention is drawn to the important notice. Important notice 1. Particulars: These particulars are not an offer or contract, nor part of one. You should not rely on statements by Aylesford in the particulars or by word of mouth or in writing ("information") as being factually accurate about the property, its condition or its value. Neither Aylesford nor any joint agent has any authority to make any representations about the property, and accordingly any information given is entirely without responsibility on the part of the agents, seller(s) or lessor(s). 2. Photos etc: The photographs show only certain parts of the property as they appeared at the time they were taken. Areas, measurements and distance given are approximate only. 3. Regulations etc: Any reference to alterations to, or use of, any part of the property does not mean that any necessary planning, building regulations or other consent has been obtained. A buyer or lessee must find out by inspection or in other ways that these matters have been properly dealt with and that all information is correct. 4. VAT: The VAT position relating to the property may change without notice.