



Ennismore Gardens, London SW7 1AJ

£995,000

Ennismore Gardens, London SW7 1AJ

£995,000 Leasehold Approx 148 years unexpired

A light 2 bedroom top floor flat (4th floor without a lift) in a popular Knightsbridge garden square with a bright west facing reception room overlooking the communal gardens. The flat has a separate kitchen, bathroom, and the two bedrooms quietly situated at the rear.

Ennismore Gardens is a sought-after garden square close to Hyde Park and all the facilities of Knightsbridge.

South Kensington and Knightsbridge Underground Stations are nearby.

Description

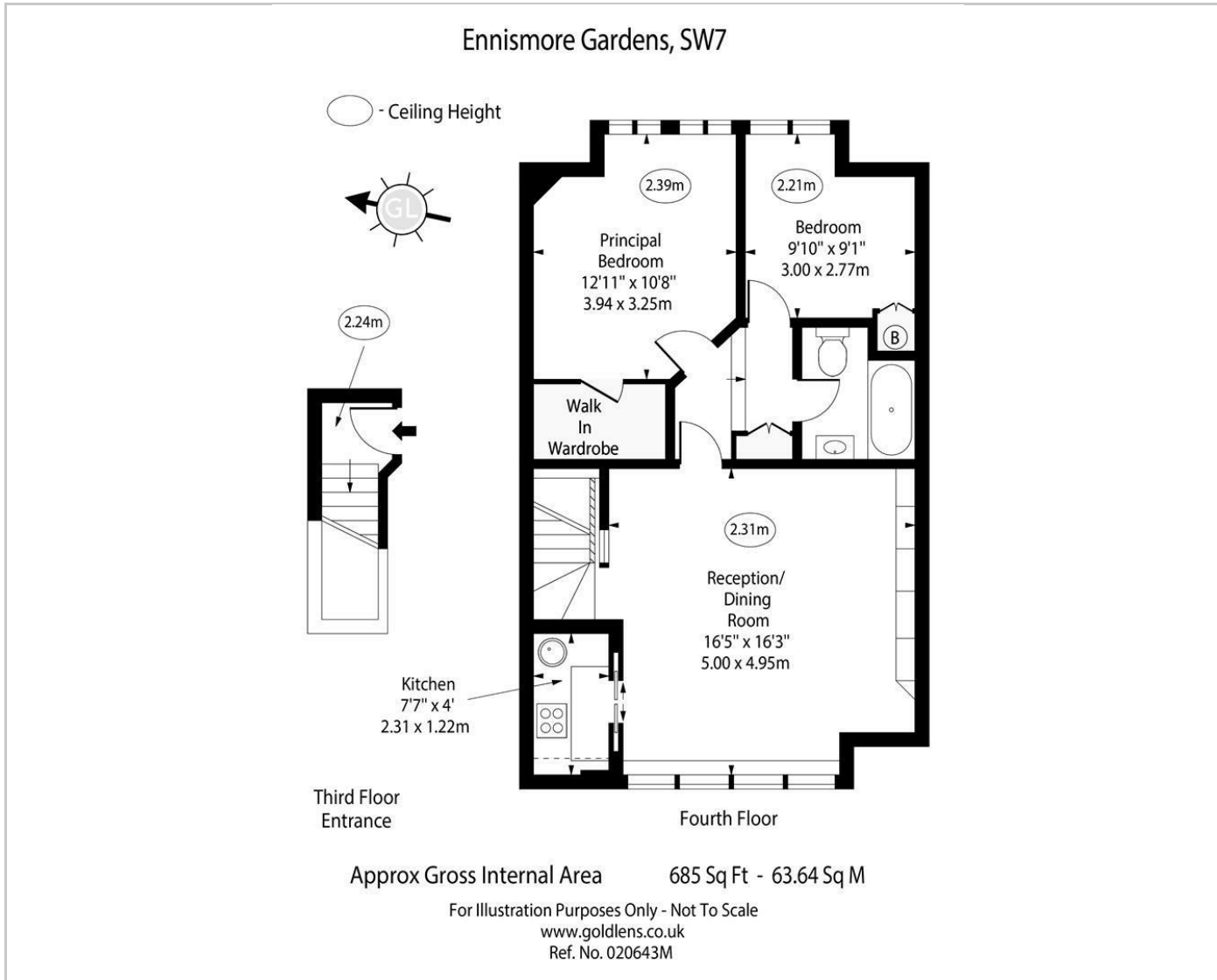
Situation

null

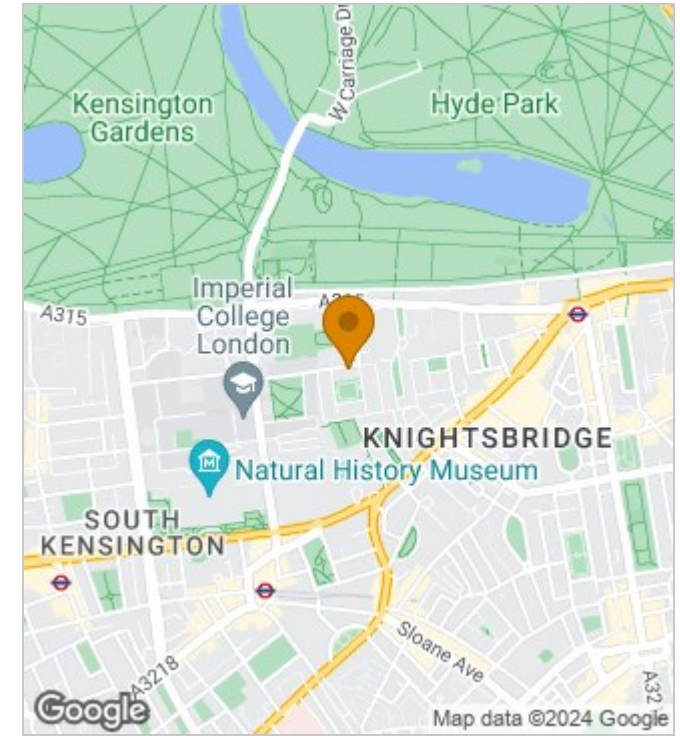
Council Tax Band: G

Available:

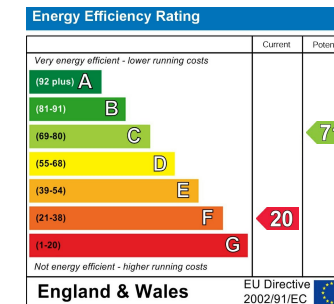
Floor Plans



Area Map



Energy Performance Graph



These particulars, whilst believed to be accurate are set out as a general outline only for guidance and do not constitute any part of an offer or contract. Intending purchasers should not rely on them as statements of representation of fact, but must satisfy themselves by inspection or otherwise as to their accuracy. No person in this firm's employment has the authority to make or give any representation or warranty in respect of the property.