



Merchant Square, London W2 1AN
£1,195 Per Week



Merchant Square, London W2 1AN

£1,195 Per Week

This beautiful interior designed three bedroom apartment is set within a modern block in the sought after Paddington Basin in W2.

This modern apartment comprises a beautiful reception room, a modern fitted open plan kitchen, three double bedrooms, two bathrooms and ample storage space. It is situated on the fourth floor of this prestigious building which features a concierge, lift service, CCTV and secure underground parking.

The apartment offers easy access to great transport links such as Paddington Train Station (Elizabeth line, Bakerloo, Hammersmith & City, Circle, District lines and Heathrow express) Edgware Road (Circle, District and Bakerloo lines).

Description

4th floor - 3 bedrooms - 783sq ft - 2 bathrooms
CCTV, Digital TV, Available furnished or unfurnished, Lifts, Parking, Porter, Shops, Video Entry

This beautiful interior designed three bedroom apartment is set within a modern block in the sought after Paddington Basin in W2.

This modern apartment comprises a beautiful reception room, a modern fitted open plan kitchen, three double bedrooms, two bathrooms and ample storage space.

Situation

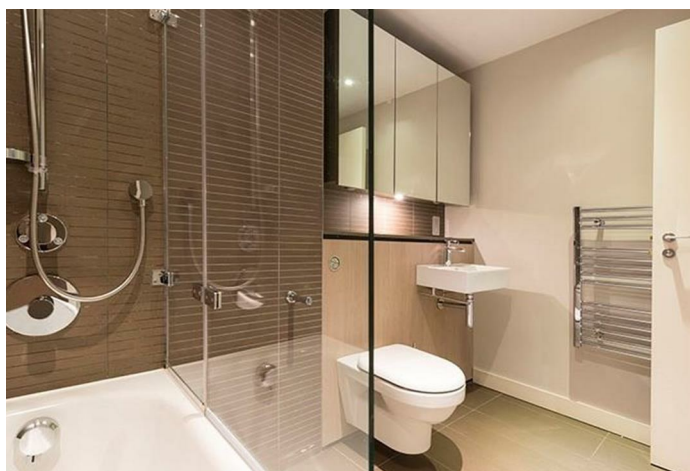
It is situated on the fourth floor of this prestigious building which features a concierge, lift service, CCTV and secure underground parking.

The apartment offers easy access to great transport links such as Paddington Train Station (Elizabeth line, Bakerloo, Hammersmith & City, Circle, District lines and Heathrow express) Edgware Road (Circle, District and Bakerloo lines).

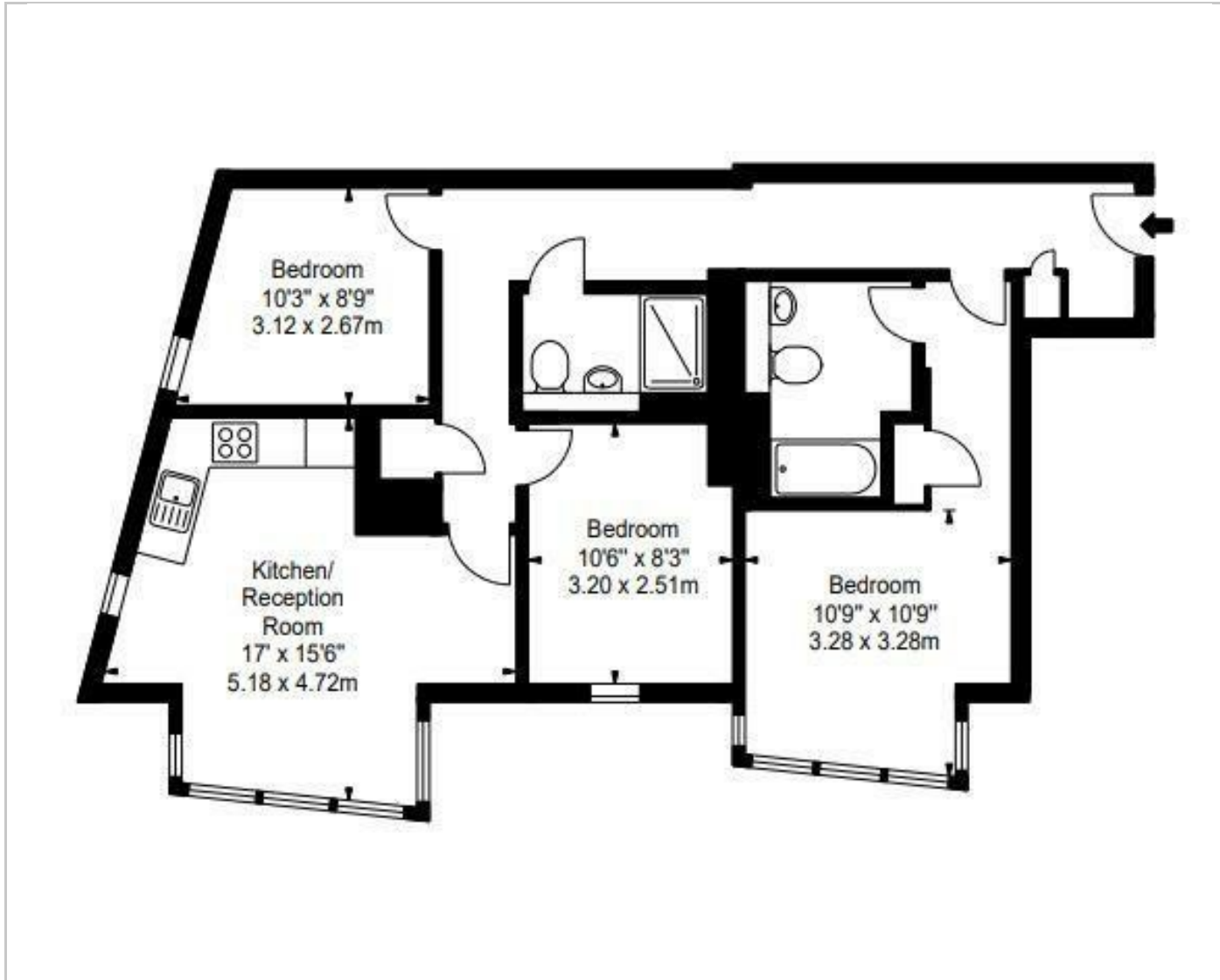
Furnished/unfurnished

Council Tax Band:

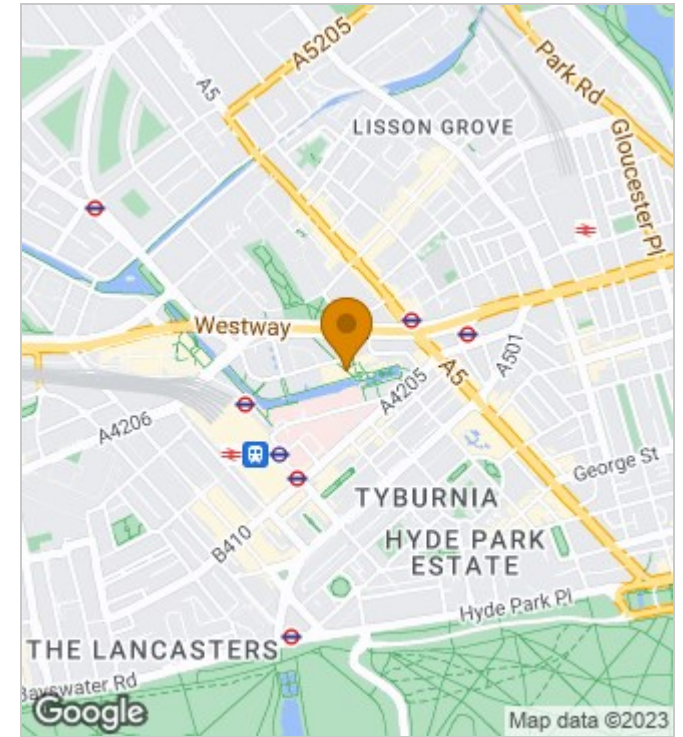
Available: 17th April 2023



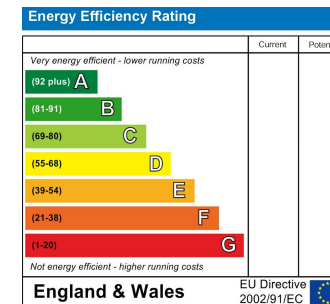
Floor Plans



Area Map



Energy Performance Graph



These particulars, whilst believed to be accurate are set out as a general outline only for guidance and do not constitute any part of an offer or contract. Intending purchasers should not rely on them as statements of representation of fact, but must satisfy themselves by inspection or otherwise as to their accuracy. No person in this firm's employment has the authority to make or give any representation or warranty in respect of the property.

440 Kings Road, London, SW10 0LH

Tel: 02073512383 Email: lettings@aylesford.com <https://www.aylesford.com>

AYLESFORD
INTERNATIONAL