



Fulham Road, Chelsea, London SW3 6SH

£1,025 Per Week



Fulham Road, Chelsea, London SW3 6SH

£1,025 Per Week

Located in the heart of Chelsea this spacious, first floor, two double bedroom apartment in a period, portered building is now available to rent.

The flat comprises of two double bedrooms, and a good-sized reception/dining room with views over the communal gardens to the rear. The flat also benefits from two bathrooms, one shower room and another well-proportioned bathroom, to include a shower over bath.

The property is available to rent furnished or unfurnished.

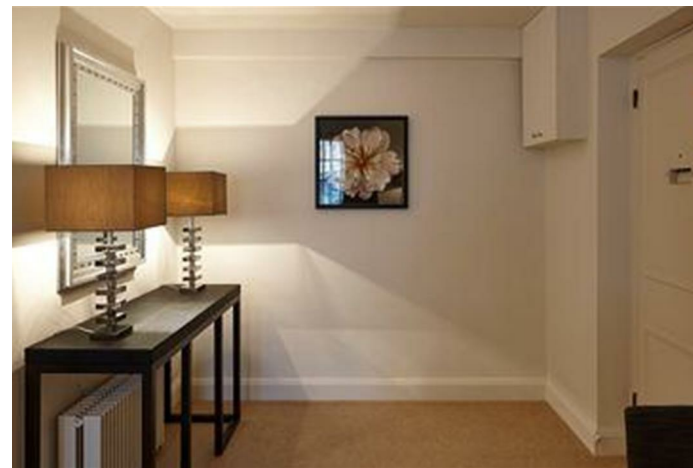
Description

Located in the heart of Chelsea this spacious, first floor, two double bedroom apartment in a period, portered building is now available to rent.

The flat comprises of two double bedrooms, and a good-sized reception/dining room with views over the communal gardens to the rear. The flat also benefits from two bathrooms, one shower room and another well-proportioned bathroom, to include a shower over bath.

The property is available to rent furnished or unfurnished.

Situation



Furnished/unfurnished

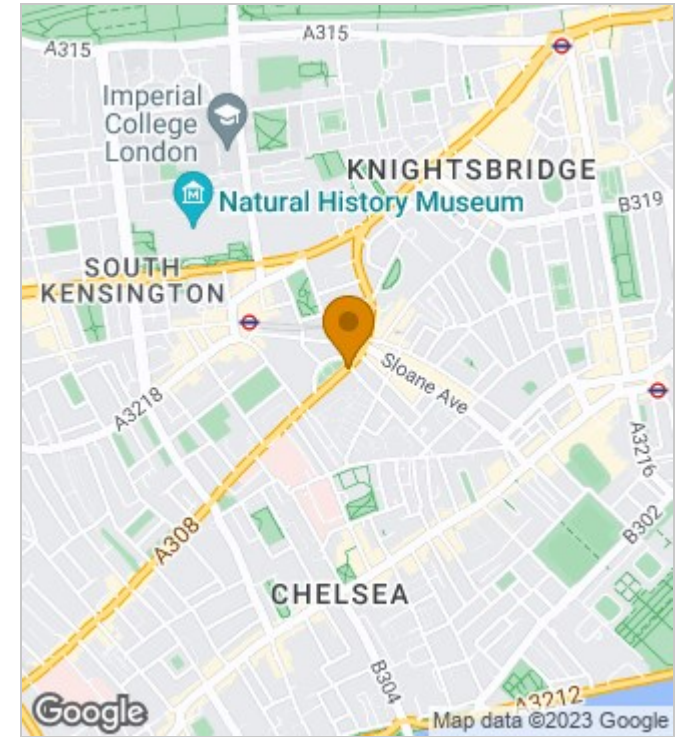
Council Tax Band: C

Available: 14th November 2023

Floor Plans



Area Map



Energy Performance Graph

Energy Efficiency Rating		
	Current	Potential
Very energy efficient - lower running costs		
(92-plus) A		
(81-91) B		
(69-80) C		
(55-68) D		
(39-54) E		
(21-38) F		
(1-20) G		
Not energy efficient - higher running costs		
England & Wales		EU Directive 2002/91/EC

These particulars, whilst believed to be accurate are set out as a general outline only for guidance and do not constitute any part of an offer or contract. Intending purchasers should not rely on them as statements of representation of fact, but must satisfy themselves by inspection or otherwise as to their accuracy. No person in this firm's employment has the authority to make or give any representation or warranty in respect of the property.