



Fulham Road, Chelsea, London SW3 6SH

**£1,100 Per Week**



Fulham Road, Chelsea, London SW3 6SH

**£1,100 Per Week**

A rare opportunity to rent this lovely 2-bedroom apartment located in the heart of Chelsea. This quiet, bright, spacious, 3rd-floor apartment looks directly out onto the gardens of Pelham Court and is a perfect pied a Terre.

The apartment has just been redecorated and furnished to a very high standard.

The property is available to rent unfurnished.

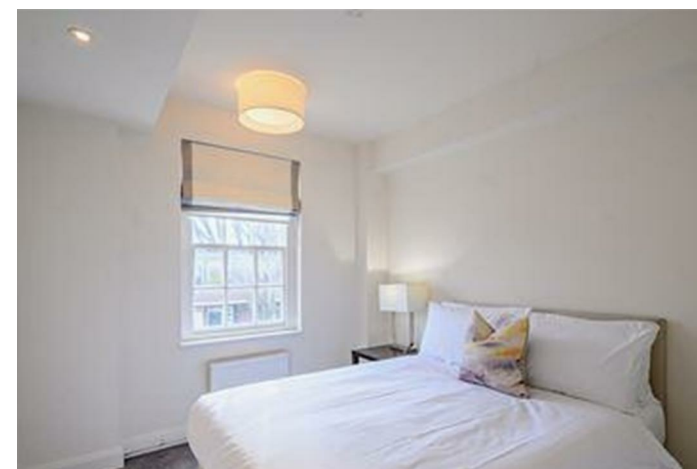
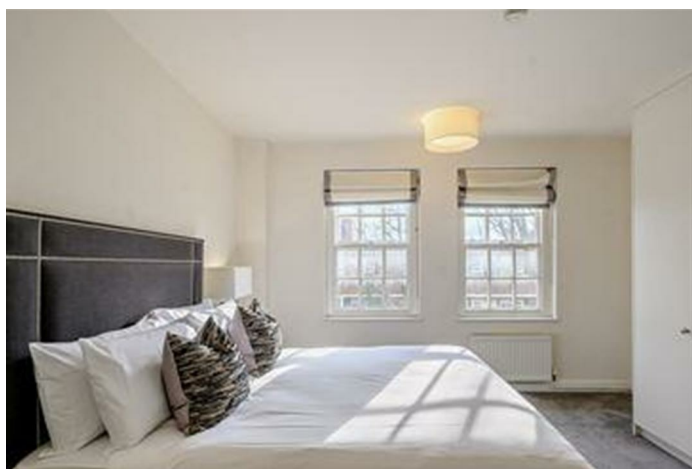
## Description

A rare opportunity to rent this lovely 2-bedroom apartment located in the heart of Chelsea. This quiet, bright, spacious, 3rd-floor apartment looks directly out onto the gardens of Pelham Court and is a perfect pied a Terre.

The apartment has just been redecorated and furnished to a very high standard.

The property is available to rent unfurnished.

## Situation

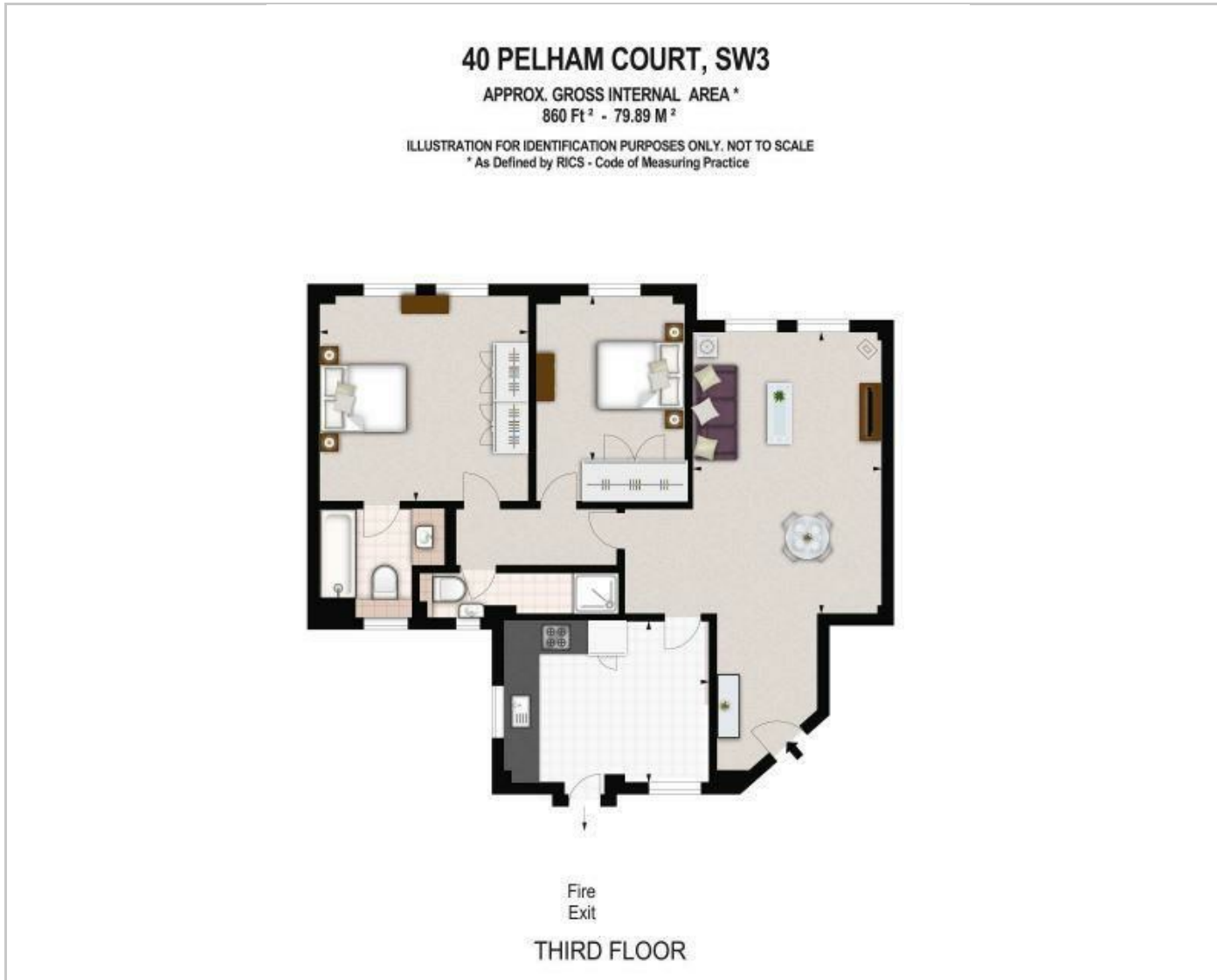


Furnished/unfurnished

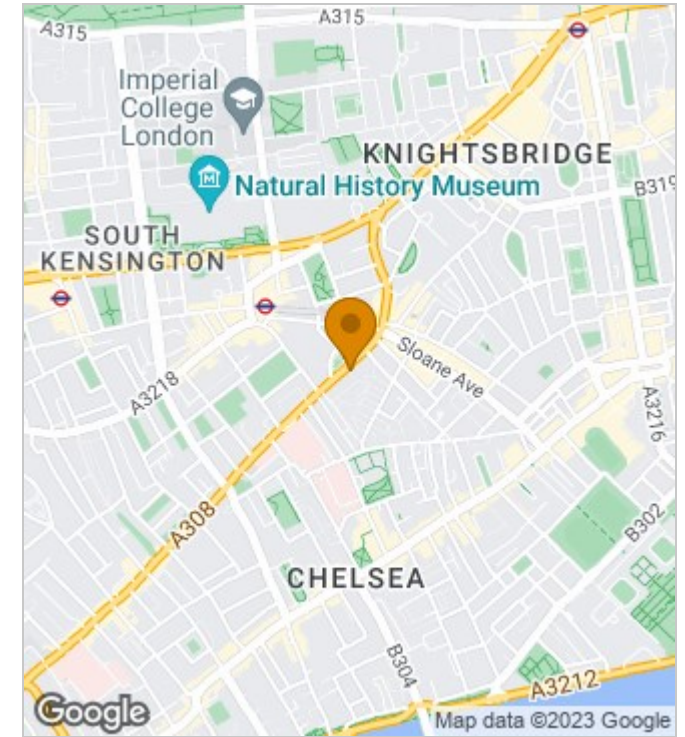
Council Tax Band: E

Available: 14th November 2023

## Floor Plans



## Area Map



## Energy Performance Graph

Energy Efficiency Rating		Current	Potential
Very energy efficient - lower running costs			
(92-plus) <b>A</b>			
(81-91) <b>B</b>			
(69-80) <b>C</b>			
(55-68) <b>D</b>			
(39-54) <b>E</b>			
(21-38) <b>F</b>			
(1-20) <b>G</b>			
Not energy efficient - higher running costs			
<b>England &amp; Wales</b>		EU Directive 2002/91/EC	

These particulars, whilst believed to be accurate are set out as a general outline only for guidance and do not constitute any part of an offer or contract. Intending purchasers should not rely on them as statements of representation of fact, but must satisfy themselves by inspection or otherwise as to their accuracy. No person in this firm's employment has the authority to make or give any representation or warranty in respect of the property.