



6-8 Charles Clowes Walk, London SW11 7AG

£1,586 Per Week



6-8 Charles Clowes Walk, London SW11 7AG

£1,586 Per Week

An impressive interior designed 1,123 Sq Ft three double-bedroom, two-bathroom air conditioned apartment located in Thornes House forming part of The Residence Collection in Nine Elms on London's iconic South Bank.

This luxury apartment is situated on the 9th floor of this prestigious building which features a 24-hour manned concierge along with a dedicated building manager, lift service, gym, media room, board room and secure underground parking.

The apartment comprises a spacious reception room complete with Samsung Smart TV's with Bose sound bars incorporating a built in Amazon Alexa to control the reception room lighting, TV, heating systems and electric privacy curtains along with a private balcony. The reception room is open plan with a fully fitted kitchen featuring integrated Miele appliances and Hot Tap with floor to ceiling windows.

The apartment offers a master bedroom suite with walk-in wardrobes, an en-suite bathroom featuring a custom designed mirrored unit with integrated demisting features as well as a private balcony from the bedroom. The apartment benefits from two further double-bedrooms and a family shower room with WC and separate guest cloakroom. The apartment also benefits from ample storage space.

Thornes House is ideally positioned between two new Northern Line underground stations (set to open in 2020), adding to the extensive transport links including tree lined footpaths, dedicated cycle lanes, Clipper river service, local buses and the Pimlico bridge providing direct access into the neighbouring Royal Boroughs of Kensington and Chelsea.

Description

An impressive interior designed 1,123 Sq Ft three double-bedroom, two-bathroom air conditioned apartment located in Thornes House forming part of The Residence Collection in Nine Elms on London's iconic South Bank.

This luxury apartment is situated on the 9th floor of this prestigious building which features a 24-hour manned concierge along with a dedicated building manager, lift service, gym, media room, board room and secure underground parking.

The apartment comprises a spacious reception room complete with Samsung Smart TV's with Bose sound bars incorporating a built in Amazon Alexa to control the reception room lighting, TV, heating systems and electric privacy curtains along with a private balcony. The reception room is open plan with a fully fitted kitchen featuring integrated Miele appliances and Hot Tap with floor to ceiling windows.

The apartment offers a master bedroom suite with walk-in wardrobes, an en-suite bathroom featuring a custom designed mirrored unit with integrated demisting features as well as a private balcony from the bedroom. The apartment benefits from two further double-bedrooms and a family shower room with WC and separate guest cloakroom. The apartment also benefits from ample storage space.

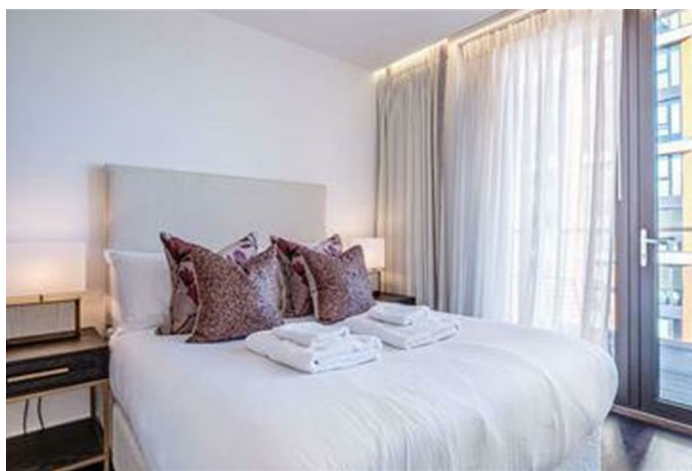
Situation

Thornes House is ideally positioned between two new Northern Line underground stations (set to open in 2020), adding to the extensive transport links including tree lined footpaths, dedicated cycle lanes, Clipper river service, local buses and the Pimlico bridge providing direct access into the neighbouring Royal Boroughs of Kensington and Chelsea.

Furnished/unfurnished

Council Tax Band: G

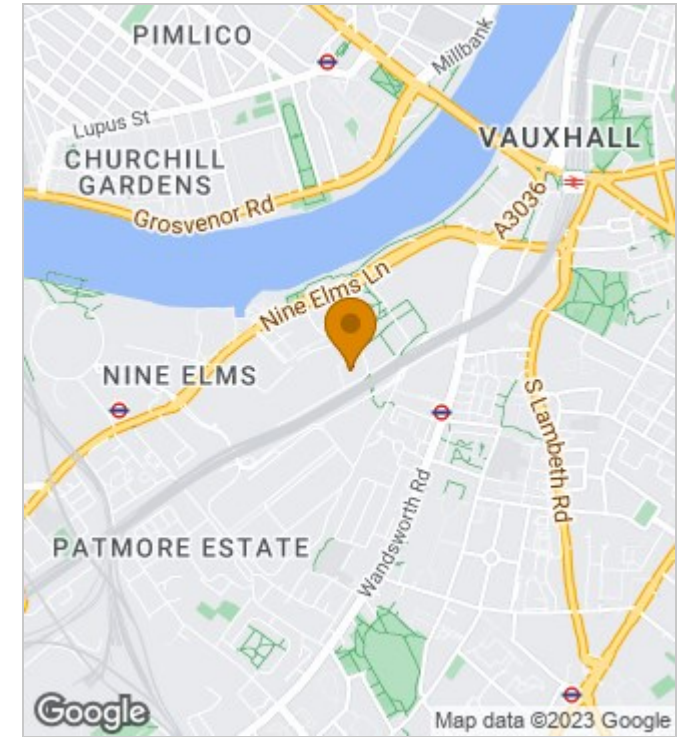
Available: 17th October 2023



Floor Plans



Area Map



Energy Performance Graph

Energy Efficiency Rating		
	Current	Potential
Very energy efficient - lower running costs		
(92 plus) A		
(81-91) B		
(69-80) C		
(55-68) D		
(39-54) E		
(21-38) F		
(1-20) G		
Not energy efficient - higher running costs		
England & Wales	EU Directive 2002/91/EC	

These particulars, whilst believed to be accurate are set out as a general outline only for guidance and do not constitute any part of an offer or contract. Intending purchasers should not rely on them as statements of representation of fact, but must satisfy themselves by inspection or otherwise as to their accuracy. No person in this firm's employment has the authority to make or give any representation or warranty in respect of the property.