





Elm Park Gardens, London SW10 9PE

£1,550 Per Week / £7,800 Per Month

This beautifully appointed two bedroom ground floor apartment has been stylishly designed to offer a haven of sophistication and comfort. The high ceilings and large windows bestow an airy and open ambiance throughout and flood the living spaces with abundant natural light. The apartment features a modern, fully-equipped kitchen that connects to the reception room both benefiting from views over the communal gardens which the property has direct access to. The property has a generous sized principal bedroom with ensuite shower room as well as a second bedroom and additional shower room. Additionally, there is an off street parking space included.

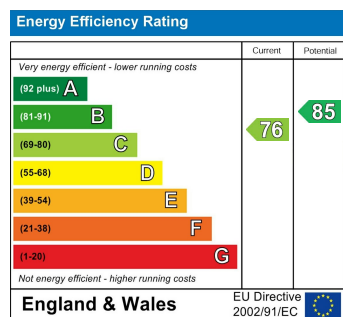
Description

Reception Room
Kitchen
Principal Bedroom with ensuite Shower Room
Second Double Bedroom
Shower Room
Communal Gardens
Off-Street Parking

Situation

Elm Park Gardens offers residents the best of both worlds: a peaceful retreat within the bustling heart of the city. Nearby amenities, including upscale boutiques, trendy cafes, and renowned restaurants, cater to your every desire. Excellent transport links provide seamless connections to the rest of the city, making your daily commute a breeze.

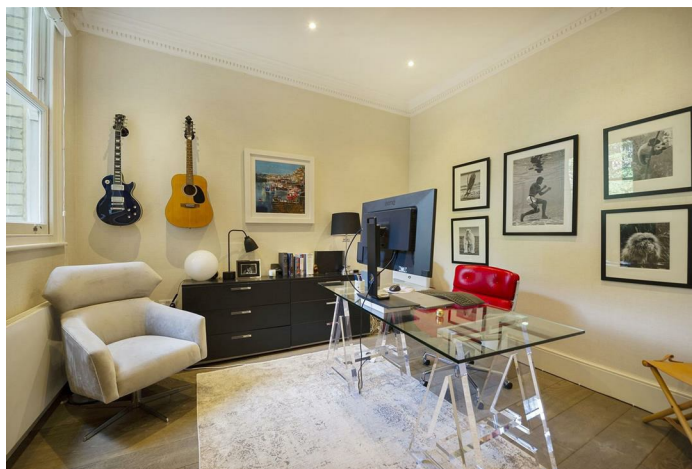
Energy Performance Graph



Furnished/unfurnished

Council Tax Band: G

Available: 1st September 2023

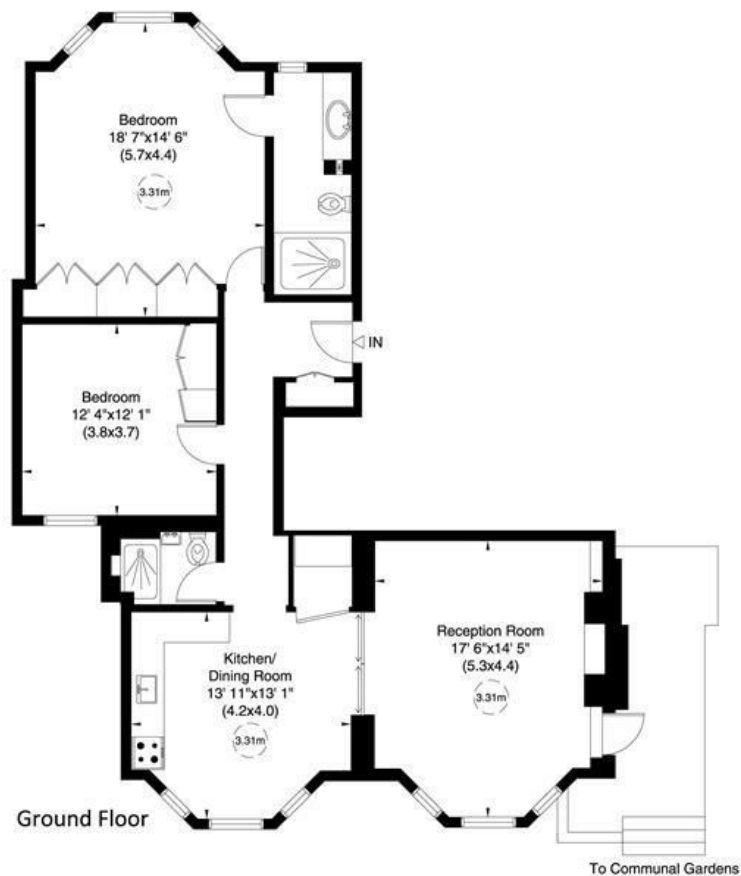


Elm Park Gardens, SW10

Approximate Gross Internal Area

99 sq m/ 1066 sq ft

Not to Scale, for identification only



For guidance only and must not be relied upon as a statement of fact.
All measurements and areas are approximate only (and have been prepared in accordance with the current edition of the RICS Code of Measuring Practice).



440 Kings Road, London, SW10 0LH

Tel: 02073512383 Email: lettings@aylesford.com <https://www.aylesford.com>