

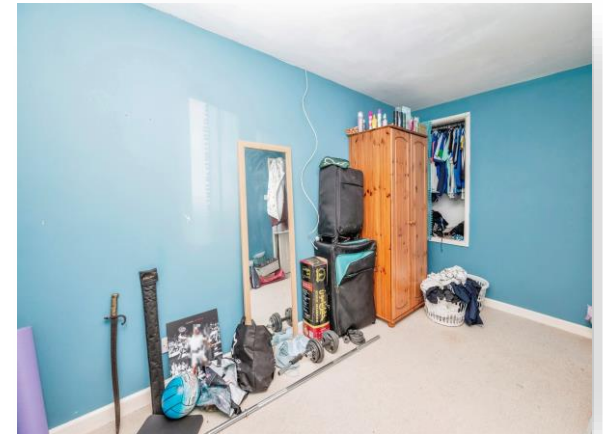


Ollands Road, Reepham, Norwich, NR10 4EJ

welcome to

Ollands Road, Reepham, Norwich

Modern 2 bedroom, end of row house in the historic market town of Reepham, with outside space and parking.



Description

Just off the historic market place of Reepham and within the Conservation Area. Handy for a range of amenities including shops, pub and church. The house offers a Kitchen/Diner and a 13'7" Lounge, with stairway off and doors opening to your patio garden. It also has the benefit of off-road parking. The North Norfolk coast and Norwich are each c. 30 mins drive away.

Entrance Porch

Part glazed front door open to porch with coats hanging & door to Kitchen/Diner.

Kitchen / Diner

13' 7" x 12' (4.14m x 3.66m)

Fitted with a range of wall and base units and work surface over with sink. Electric oven and hob with cooker hood over, integrated fridge/freezer and plumbing for washing machine. Tiling to floor, storage heater and front aspect double glazed window.

Lounge

13' 7" x 12' 11" narrowing to (4.14m x 3.94m narrowing to) Stairway leading off with side aspect double glazed window, storage heater and rear aspect double glazed window & patio doors to outside.

Landing

Airing cupboard, storage heater and white panel doors to Bedrooms & Bathroom.

Bedroom 1

13' 7" x 9' 2" (4.14m x 2.79m)

Store cupboard, electric heater and rear aspect double glazed window.

Bedroom 2

12' 1" x 7' (3.68m x 2.13m)

Built-in store cupboard, electric heater and front aspect double glazed window with outlook to garden walls & pantile rooftops opposite.

Suite comprises of WC, wash basin and bath with shower over. Tile flooring, electric towel radiator and double glazed window.

Outside

Front

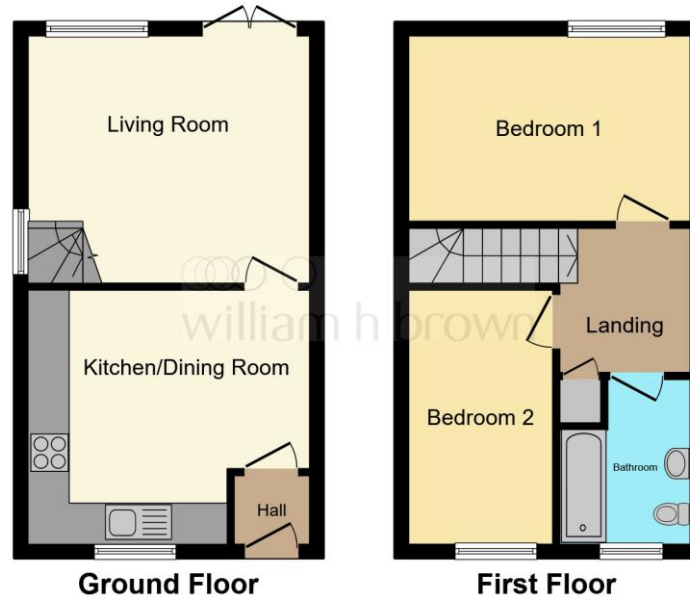
Small enclosed approach garden to the front with gate from Ollands Road.

Rear

An enclosed & paved patio garden to the rear, offering low maintenance space to sit and dine outside.

Parking

Allocated parking to an open area at the rear of the house, approached by the lane to the side.



This floor plan is for illustrative purposes only. It is not drawn to scale. Any measurements, floor areas (including any total floor area), openings and orientation are approximate. No details are guaranteed, they cannot be relied upon for any purpose and they do not form part of any agreement. No liability is taken for any error, omission or misstatement. A party must rely upon its own inspection(s). Powered by www.focalagent.com



view this property online williamhbrown.co.uk/Property/RPM103609



welcome to

Ollands Road, Reepham, Norwich

- NO CHAIN!
- Town Centre Location
- Courtyard Garden
- Allocated Parking
- 2 Bedrooms
- Council Tax Band B

Tenure: Freehold EPC Rating: E

offers in excess of

£200,000



Please note the marker reflects the postcode not the actual property

view this property online williamhbrown.co.uk/Property/RPM103609



Property Ref:
RPM103609 - 0002

1. MONEY LAUNDERING REGULATIONS Intending purchasers will be asked to produce identification documentation at a later stage and we would ask for your co-operation in order that there is no delay in agreeing the sale. 2. These particulars do not constitute part or all of an offer or contract. 3. The measurements indicated are supplied for guidance only and as such must be considered incorrect. Potential buyers are advised to recheck measurements before committing to any expense. 4. We have not tested any apparatus, equipment, fixtures or services and it is in the buyers interest to check the working condition of any appliances. 5. Where an EPC, or a Home Report (Scotland only) is held for this property, it is available for inspection at the branch by appointment. If you require a printed version of a Home Report, you will need to pay a reasonable production charge reflecting printing and other costs. 6. We are not able to offer an opinion either written or verbal on the content of these reports and this must be obtained from your legal representative. 7. Whilst we take care in preparing these reports, a buyer should ensure that his/her legal representative confirms as soon as possible all matters relating to title including the extent and boundaries of the property and other important matters before exchange of contracts.

William H Brown is a trading name of Sequence (UK) Limited which is registered in England and Wales under company number 4268443, Registered Office is Cumbria House, 16-20 Hockliffe Street, Leighton Buzzard, Bedfordshire, LU7 1GN. VAT Registration Number is 500 2481 05.



william h brown



01603 873208



Reepham@williamhbrown.co.uk



4 Townsend Court, REEPHAM, NORWICH,
Norfolk, NR10 4LD



williamhbrown.co.uk