



Larmouth Court, DL15 0FG
4 Bed - House - Detached
£250,000

ROBINSONS
SALES • LETTINGS • AUCTIONS • SURVEYS

Larmouth Court , DL15 0FG

Robinsons are delighted to present to the market, with the advantage of NO FORWARD CHAIN, this spacious four-bedroom detached family home. Offering generous living accommodation throughout, the property is well-suited to the requirements of modern family life.

Benefitting from gas central heating and UPVC double glazing, the home also features a utility room, ground floor cloakroom/WC, and an en-suite to the main bedroom.

The accommodation briefly comprises: entrance vestibule, a bright lounge with bay window to the front, and a modern open-plan kitchen/dining room fitted with a range of wall, base, and drawer units, integrated oven and hob, understairs storage, and patio doors opening to the rear garden. The ground floor is further enhanced by a utility room and cloakroom/WC.

To the first floor are four well-proportioned bedrooms, the main with fitted wardrobes and en-suite shower room, plus a family bathroom with three-piece suite.

Externally, the property offers a driveway and garage to the front, while the enclosed rear garden is mainly laid to lawn with a patio area, ideal for outdoor entertaining.

Situated on Larmouth Court in Willington, the home is conveniently positioned close to local schools, shops, and bus routes, with Crook and Bishop Auckland only a short drive away.

Early viewing is highly recommended. Please contact Robinsons today to arrange your appointment.













Agents Notes

Electricity Supply: Mains

Water Supply: Mains

Sewerage: Mains

Heating: Gas central heating

EPC Rating: D

Tenure: Freehold

Durham County Council Tax Band: D

£2551.00

Broadband

Basic

19 Mbps

Superfast

80 Mbps

Ultrafast

10000 Mb

Mobile Signal: Average

Disclaimer

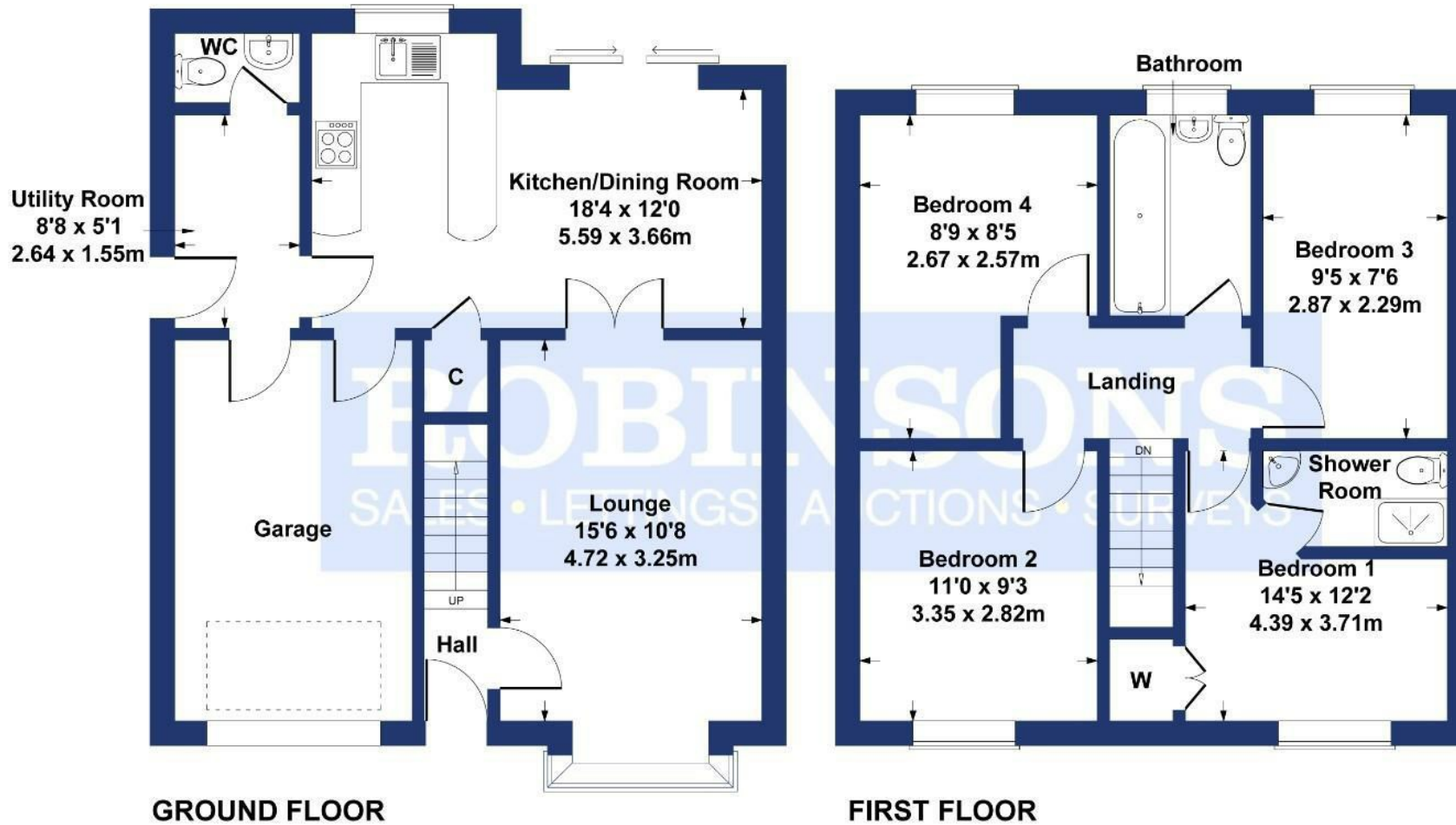
The preceding details have been sourced from the seller and OntheMarket.com. Verification and clarification of this information, along with any further details concerning Material Information parts A, B and C, should be sought from a legal representative or appropriate authorities. Robinsons cannot accept liability for any information provided.





Larmouth Court Willington

Approximate Gross Internal Area
1244 sq ft - 116 sq m (Excluding Garage)



SKETCH PLAN FOR ILLUSTRATIVE PURPOSES ONLY

All measurements walls, doors, windows, fittings and appliances, their sizes and locations, are approximate only. They cannot be regarded as being a representation by the seller, nor their agent.

Produced by Potterplans Ltd. 2025

Energy Efficiency Rating		
	Current	Potential
Very energy efficient - lower running costs		
(92 plus) A		84
(81-91) B		
(69-80) C		
(55-68) D		
(39-54) E		
(21-38) F	57	
(1-20) G		
Not energy efficient - higher running costs		
England & Wales		EU Directive 2002/91/EC

For clarification we wish to inform prospective purchasers that we have prepared these sales particulars as a general guide. We have not carried out a detailed survey, nor tested the services, appliances and specific fittings. Room sizes should not be relied upon for carpets and furnishings, if there are important matters which are likely to affect your decision to buy, please contact us before viewing the property. Robinsons can recommend financial services, surveying and conveyancing services to sellers and buyers. Robinsons staff may benefit from referral incentives relating to these services.



Royal Corner, Crook, County Durham, DL15 9UA
Tel: 01388763477
info@robinsonscrook.co.uk
www.robinsonsestateagents.co.uk

