



Ashcroft, Stanhope, DL13 2NR
3 Bed - Bungalow - Detached
£225,000

ROBINSONS
SALES • LETTINGS • AUCTIONS • SURVEYS

Ashcroft

Stanhope, DL13 2NR

* NO FORWARD CHAIN * WELL PRESENTED THROUGHOUT * OFF ROAD PARKING * ENCLOSED REAR GARDEN *

Robinsons have the pleasure of offering to the sales market, with the bonus of having no onward chain, this recently decorated three bedroom detached bungalow. The property is positioned in a quiet cul-de-sac in the ever desirable Weardale village of Stanhope and has a driveway to the front.

The property is warmed by a gas 'Baxi' combination boiler, it has UPVC double glazed windows, and a modern bathroom suite, along with a well cared for kitchen.

The internal accommodation comprises; entrance hallway, spacious lounge/dining room with a window to the front aspect and sliding patio doors which were fitted recently and overlook the rear garden and Weardale countryside view. A kitchen which is fitted with a range of wall, base and drawer units with integrated hob, oven and extractor hood, space for other appliances and storage cupboard housing the gas boiler.

To conclude the internal accommodation there are three bedrooms, one could be useful for a further reception room and a bathroom with three piece suite, including bath with mains shower above with shower screen.

Outside the property has a driveway to the front and small lawn area with shrubs. The rear garden is enclosed and well stocked with mature shrubs and borders, lawn and patio area which has a pleasant outlook over Weardale countryside.

Stanhope is a popular village in Weardale and has a range of shopping amenities, including grocery store, butchers, tea room, cafes, restaurants and public house. The village is on a bus route and has a primary school, secondary schooling is in the nearby village of Wolsingham.

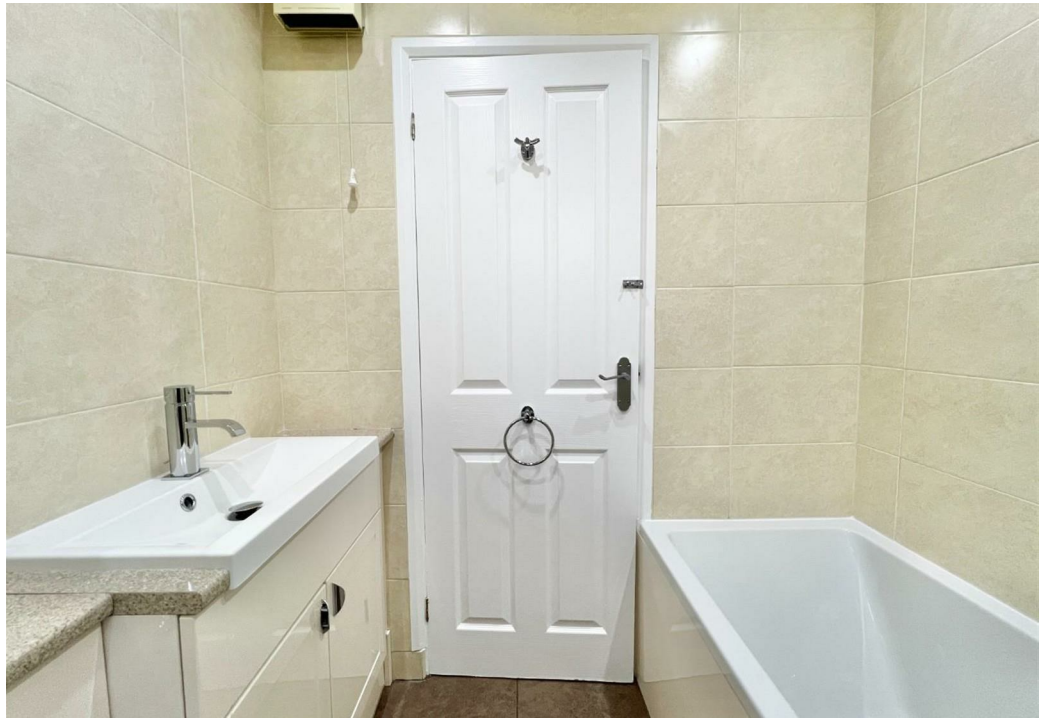
Stanhope is surrounded by an abundance of pleasant countryside views and walking routes and is within a driving distance away from larger towns and cities, including Durham and Bishop Auckland.

Contact Robinsons for further information and to arrange an internal viewing.













AGENT NOTES

Electricity Supply: Mains
Water Supply: Mains
Sewerage: Mains
Heating: Gas central heating
EPC Rating: D

Tenure: Freehold

Durham Council Tax Band: C
Annual Price: £2,268.00
Broadband
Basic
8 Mbps
Superfast
80 Mbps
Mobile Signal: Average/Good

Disclaimer

The preceding details have been sourced from the seller and OntheMarket.com. Verification and clarification of this information, along with any further details concerning Material Information parts A, B and C, should be sought from a legal representative or appropriate authorities. Robinsons cannot accept liability for any information provided

VIEWINGS

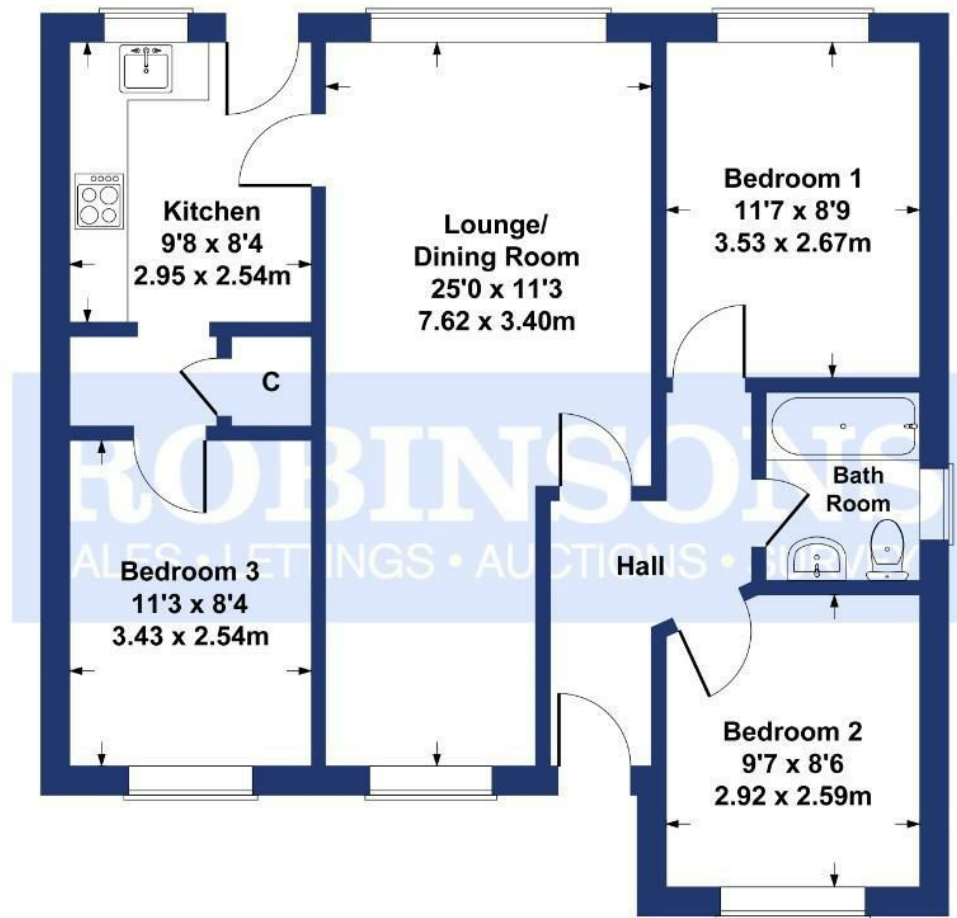
Viewings are by appointment only, please contact Robinsons to arrange yours.





Ashcroft, Stanhope


Approximate Gross Internal Area
770 sq ft - 72 sq m



SKETCH PLAN FOR ILLUSTRATIVE PURPOSES ONLY

All measurements walls, doors, windows, fittings and appliances, their sizes and locations, are approximate only. They cannot be regarded as being a representation by the seller, nor their agent.

Produced by Potterplans Ltd. 2024

Energy Efficiency Rating		Current	Potential
Very energy efficient - lower running costs			
(92 plus) A			82
(81-91) B			
(69-80) C			
(55-68) D			
(39-54) E			
(21-38) F			65
(1-20) G			
Not energy efficient - higher running costs			
England & Wales		EU Directive 2002/91/EC	

For clarification we wish to inform prospective purchasers that we have prepared these sales particulars as a general guide. We have not carried out a detailed survey, nor tested the services, appliances and specific fittings. Room sizes should not be relied upon for carpets and furnishings, if there are important matters which are likely to affect your decision to buy, please contact us before viewing the property. Robinsons can recommend financial services, surveying and conveyancing services to sellers and buyers. Robinsons staff may benefit from referral incentives relating to these services.

