



**Mount Park, NE9 7UQ**  
**4 Bed - House - Detached**  
**£324,995**

**ROBINSONS**  
SALES • LETTINGS • AUCTIONS • SURVEYS

\* CALL US TODAY TO SCHEDULE YOUR VIEWING \*

Welcome to Mount Park, an exceptional assortment of high-quality 3 & 4-bedroom residences situated in Springwell Village, Gateshead. Mount Park accommodates purchasers with varying budgets and needs. Whether you're a family seeking more space, requiring additional living area, or simply desiring a move to a more economical and eco-friendly home, it's the perfect setting to embark on the next phase of your life.

#### PLOT 61

The Durham embodies a captivating 3-bedroom residence, harmoniously blending practicality with elegance. Its open-plan kitchen, dining, and family area offer ample room for relaxation and shared moments, while the master en-suite and garage provide essential functionality. Chic bifold doors extend onto a rear garden, effortlessly merging indoor and outdoor realms.

From ground to first floor, meticulous design defines this abode. Spaces seamlessly interconnect, fostering a sense of unity among rooms. Upstairs, two additional bedrooms accompany the master suite and en-suite, alongside a commodious family bathroom.

Esh Homes uphold a high standard of specification across all their residences, with renowned brands such as Beko, Porcelanosa, and HIVE included. Moreover, their homes come equipped with spotlights, appliances, alarm systems, and block-paved driveways as standard.

THIS PROPERTY HAS A B ENERGY RATING.



# OUR SERVICES

Mortgage Advice

Conveyancing

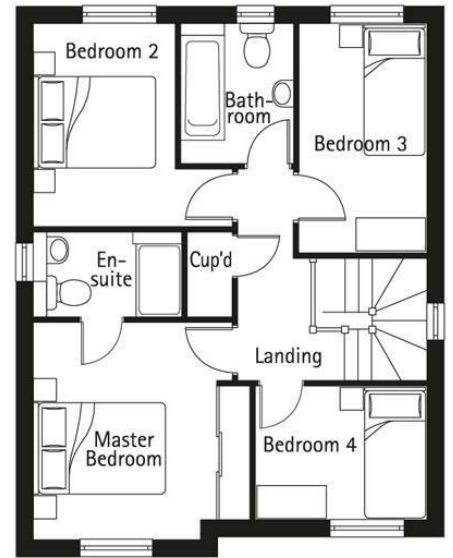
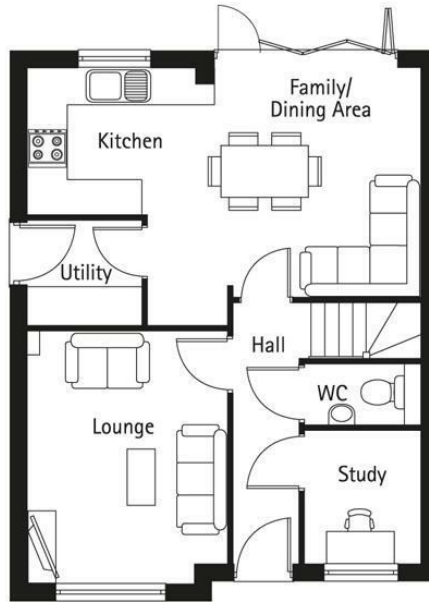
Surveys and EPCs

Property Auctions

Lettings and Management

Strategic Marketing Plan

Dedicated Property Manager



Energy Efficiency Rating		Current	Potential
Very energy efficient - lower running costs			
92-100	A		
81-91	B		
69-80	C		
55-65	D		
45-54	E		
35-44	F		
2-34	G		
Not energy efficient - higher running costs			
England & Wales		EU Directive 2002/91/EC	

Environmental Impact (CO <sub>2</sub> ) Rating		Current	Potential
Very environmentally friendly - lower CO <sub>2</sub> emissions			
101-109	A		
81-100	B		
69-80	C		
55-65	D		
45-54	E		
35-44	F		
2-34	G		
Not environmentally friendly - higher CO <sub>2</sub> emissions			
England & Wales		EU Directive 2002/91/EC	

## DURHAM

1-3 Old Elvet  
DH1 3HL

T: 0191 386 2777 (Sales)

T: 0191 383 9994 (option1) (Lettings)

E: [info@robinsonsdurham.co.uk](mailto:info@robinsonsdurham.co.uk)

## DURHAM REGIONAL HEAD OFFICE

19A old Elvet  
DH1 3HL

T: 0191 383 0777

E: [info@robinsonsdurham.co.uk](mailto:info@robinsonsdurham.co.uk)

## CHESTER-LE-STREET

45 Front Street  
DH3 3BH

T: 0191 387 3000

E: [info@robinsonscs.co.uk](mailto:info@robinsonscs.co.uk)

## BISHOP AUCKLAND

120 Newgate Street  
DL14 7EH

T: 01388 458111

E: [info@robinsonsbishop.co.uk](mailto:info@robinsonsbishop.co.uk)

## CROOK

Royal Corner  
DL15 9UA

T: 01388 763477

E: [info@robinsonscrook.co.uk](mailto:info@robinsonscrook.co.uk)

## SPENNYMOOR

11 Cheapside  
DH16 6QE

T: 01388 420444

E: [info@robinsonsspennymoor.co.uk](mailto:info@robinsonsspennymoor.co.uk)

## SEDFIELD

3 High Street  
TS21 2AU

T: 01740 621777

E: [info@robinsonssedfield.co.uk](mailto:info@robinsonssedfield.co.uk)

Every care has been taken with the preparation of these particulars, but they are for general guidance only and complete accuracy cannot be guaranteed. If there is any point, which is of particular importance please ask or professional verification should be sought. All dimensions are approximate. The mention of fixtures, fittings &/or appliances does not imply they are in full efficient working order. Photographs are provided for general information and it cannot be inferred that any item shown is included in the sale. These particulars do not constitute a contract or part of a contract.

Robinsons can recommend financial services, surveying and conveyancing services to sellers and buyers. Robinsons staff may benefit from referral incentives relating to these services.



# ROBINSONS

SALES • LETTINGS • AUCTIONS • SURVEYS

45 Front Street, Chester Le Street, DH3 3BH | Tel: 0191 387 3000 | [info@robinsonscs.co.uk](mailto:info@robinsonscs.co.uk)

[www.robinsonsestateagents.co.uk](http://www.robinsonsestateagents.co.uk)