



Nestled in the prestigious West End of Darlington, this stunning 4,800 sq. ft. architecturally designed detached home offers an exceptional blend of luxury, space, and style. Set behind a secure gated entrance, the property boasts seven generously sized bedrooms, ideal for a growing family or those who love to entertain.

The ground floor is thoughtfully designed, featuring four elegant reception rooms, providing versatile spaces for formal dining, relaxation, and entertaining. A standout feature is the beautifully appointed games room, perfect for leisure and social gatherings. The modern kitchen is a chef's dream, equipped with integral appliances and a spacious breakfast area.

Upstairs, the principal suite offers a private sanctuary with a luxurious en-suite and dressing area. The additional bedrooms are well-proportioned, serviced by high-spec bathrooms designed for comfort and convenience.

Outside, the extensive landscaped gardens provide a serene retreat, with manicured lawns, mature trees, and entertaining areas ideal for al fresco dining. The gated entrance enhances privacy and exclusivity, making this home one of Darlington's finest residences.

Situated in the sought-after West End, this property is within easy reach of excellent schools, local amenities, and transport links, making it the perfect home for discerning buyers.

Abbey Road, Darlington, DL3 8LR

7 Bedroom - House

£1,250,000

EPC Rating:

Tenure: Freehold

Council Tax Band: G



Abbey Road, Darlington, DL3 8LR



Entrance Hall

22'3" x 14'3" (6.8m x 4.36m)

An Impressive "Foyer" Octagonal Shaped Room With Open Fireplace With Oak effect Surround

Living Room

19'0" x 17'0" (5.8m x 5.2m)

Living Room With A Composite style Stone Fireplace With Open Fire.

Dining Room

18'0" x 13'1" (5.5m x 4.0m)

Spacious and light room with windows to the rear elevation, central heating radiator. double oak style doors into Foyer.

Study/ Play Room

11'5" x 9'10" (3.5m x 3.0m)

Breakfast Kitchen

19'4" x 13'1" (5.9m x 4.0m)

Kitchen/ Breakfast Room Fitted With A Comprehensive Range Of wall and base units, working surfaces integral appliances.

Garden Room

16'0" x 10'9" (4.9m x 3.3m)

Garden Room With Access To The rear courtyard Garden.

Utility Room

14'9" x 9'0" (4.5m x 2.75m)

Utility Room having a range of wall/ base units. Plumbing for washing Machine.

Cloakroom/ WC

Low Level WC wash hand basin.

Games Room

39'4" x 11'9" (12m x 3.6m)

Power lighting and log burner.

Garage

Double Garage with power and lighting and up an dover door.

Attic Room Above Garage

Space saver staircase providing access from Garage with power lighting and Velux window.

Master Bedroom

18'8" 16'0" (5.7m 4.9m)

Having Sliding Double Glazed Doors Opening To Sun Lounge, central heating Radiator. Access into dressing room

Dressing Room

12'7" x 10'2" max (3.86m x 3.1m max)

Having window to front elevation, central heating Radiator.

First Floor Sun Room

16'0" (max) x 9'6" (4.9m (max) x 2.9m)

Having dual aspect windows overlooking front gardens.

Bathroom

10'5" x 9'10" (max) (3.2m x 3.01m (max))

Bathroom/WC Fitted With A White Suite Comprising Corner Jacuzzi Bath and Corner Curved Shower Cubicle, low level WC pedestal wash hand basin.

En Suite Shower Room

Walk in Show low level WC. Tiled splash back and tile flooring.

Bedroom 2
18'2" x 13'5" (5.54m x 4.1m)

Central heating Radiator, window to rear elevation.

Bedroom 3
17'8" x 13'1" (5.4m x 4.0m)

Central heating Radiator. Window to rear elevations.

Galleried Landing

Galleried landing with view over entrance Foyer and Chandelier (to be negotiated in sale).

Bedroom
18'4" x 10'11" (5.59m x 3.34m)

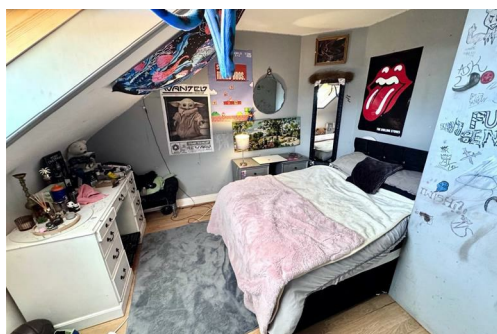
Having Central heating Radiator, Window to front elevation.

Bedroom
16'0" x 19'0" (4.90m x 5.81m)

Having Double glazed window to front elevation, central heating Radiator.

Bedroom
13'3" x 11'6" (4.06m x 3.51m)

Having double glazed window to rear elevation, central heating radiator.



Abbey Road, Darlington, DL3 8LR



Energy Efficiency Rating		
	Current	Potential
Very energy efficient - lower running costs		
(92 plus) A		
(81-91) B		
(69-80) C		
(55-68) D		
(39-54) E		
(21-38) F		
(1-20) G		
Not energy efficient - higher running costs		
England & Wales	EU Directive 2002/91/EC	



Ground Floor



Floor 1



Floor 2

Approximate total area⁽¹⁾

4598.46 ft²

427.21 m²

Reduced headroom

99.88 ft²

9.28 m²

(1) Excluding balconies and terraces

Reduced headroom

..... Below 5 ft/1.5 m

While every attempt has been made to ensure accuracy, all measurements are approximate, not to scale. This floor plan is for illustrative purposes only.

Calculations are based on RICS IPMS 3C standard.

GIRAFFE360

For clarification we wish to inform prospective purchasers that we have prepared these sales particulars as a general guide. We have not carried out a detailed survey, nor tested the services, appliances and specific fittings. Room sizes should not be relied upon for carpets and furnishings, if there are important matters which are likely to affect your decision to buy, please contact us before viewing the property. We can recommend financial services, surveying and conveyancing services to sellers and buyers. Smith & Friends Estate Agents staff may benefit from referral incentives relating to these services.

7 Duke Street, Darlington, Co. Durham, DL3 7RX
01325 484440
darlington@smith-and-friends.co.uk



SMITH & FRIENDS
ESTATE AGENTS