



Newcastle Terrace, Framwellgate Moor, DH1 5EG
3 Bed - House - Terraced
£109,950

ROBINSONS
SALES • LETTINGS • AUCTIONS • SURVEYS

No Chain ** Ideal Family Home, First Buy or Investment ** Garden ** Conservatory ** Double Glazing & GCH Via Combination Boiler ** Close to Shops, Schools, Amenities & Major Road Links ** Early Viewing is Advised **

The property briefly comprises of entrance vestibule with double doors to lounge, modern fitted kitchen, inner lobby with storage and gives access to the conservatory. The first floor has three bedrooms and spacious bathroom with white suite and over bath shower. Externally the property benefits from an enclosed garden which has the possibility for parking.

Framwellgate Moor is situated approx. 2 miles north of Durham City. It is easily accessible via well-connected public transport options, and its location offers convenient access to various amenities in the vicinity. Notable nearby facilities include the esteemed University Hospital of Durham, New College Durham, and Framwellgate School, fostering a nurturing environment for learning.

A mere mile away lies the Arnison Centre Retail Park, boasting an array of shops, outlets, a supermarket, restaurants, and even a petrol station, making it a one-stop destination for various needs and desires. For everyday essentials, residents can find smaller convenience stores and shops conveniently located on Framwellgate Moor Front Street.

With its convenient location, excellent amenities, and a vibrant community, Framwellgate Moor continues to be a sought-after destination for those seeking a balanced and enjoyable lifestyle.



GROUND FLOOR

Robinsons cannot accept liability for any information provided.

Entrance vestibule

Lounge

15'10 x 14'5 (4.83m x 4.39m)

Kitchen Diner

14'2 x 12'5 (4.32m x 3.78m)

Conservatory

9'8 x 9'1 (2.95m x 2.77m)

FIRST FLOOR

Bedroom

11'3 x 10'0 (3.43m x 3.05m)

Bedroom

11'2 x 7'10 (3.40m x 2.39m)

Bedroom

14'0 x 5'10 (4.27m x 1.78m)

Bathroom/WC

11'2 x 7'10 (3.40m x 2.39m)

Agent Notes

Electricity Supply: Mains
Water Supply: Mains
Sewerage: Mains
Heating: Gas Central Heating
Broadband: Basic 6 Mbps, Superfast 75 Mbps, Ultrafast 9000 Mbps
Mobile Signal/Coverage: Good/Average
Tenure: Freehold
Council Tax: Durham County Council, Band A - Approx. £1,621 p.a
Energy Rating: D

The property is being sold by the Principle of Robinsons Estate Agents.

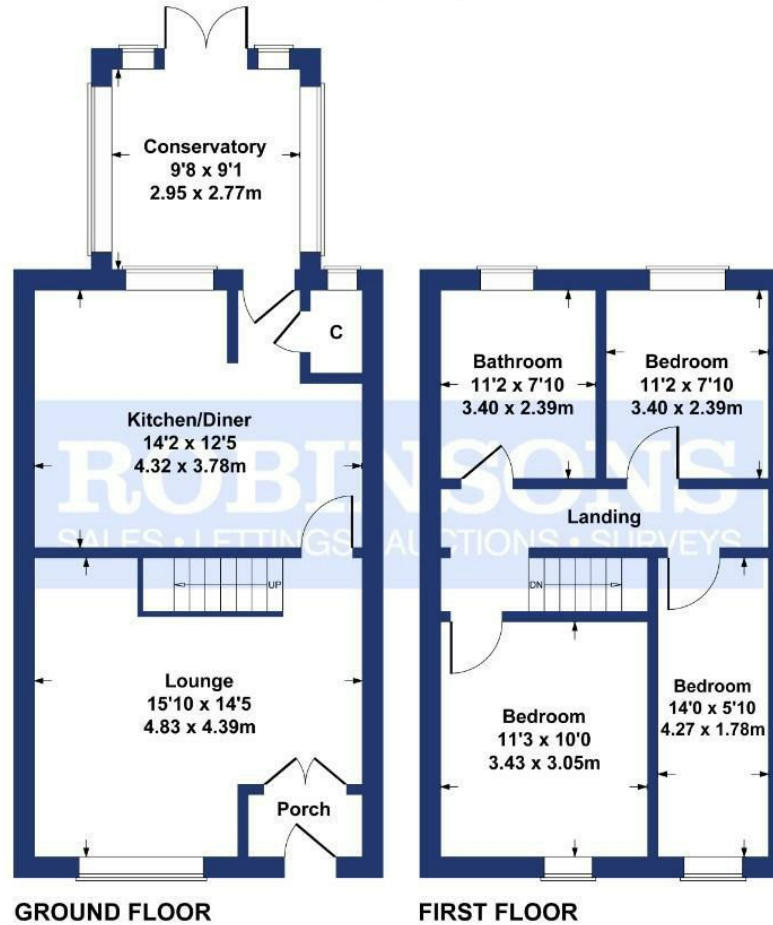
Disclaimer: The preceding details have been sourced from the seller and OnTheMarket.com. Verification and clarification of this information, along with any further details concerning Material Information parts A, B & C, should be sought from a legal representative or appropriate authorities.





Newcastle Terrace

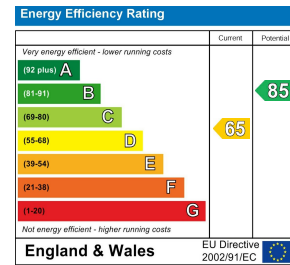
Approximate Gross Internal Area
962 sq ft - 89 sq m



SKETCH PLAN FOR ILLUSTRATIVE PURPOSES ONLY

All measurements walls, doors, windows, fittings and appliances, their sizes and locations, are approximate only. They cannot be regarded as being a representation by the seller, nor their agent.

Produced by Potterplans Ltd. 2025



Every care has been taken with the preparation of these particulars, but they are for general guidance only and complete accuracy cannot be guaranteed. If there is any point, which is of particular importance please ask or professional verification should be sought. All dimensions are approximate. The mention of fixtures, fittings &/or appliances does not imply they are in full efficient working order. Photographs are provided for general information and it cannot be inferred that any item shown is included in the sale. These particulars do not constitute a contract or part of a contract. Robinsons can recommend financial services, surveying and conveyancing services to sellers and buyers. Robinsons staff may benefit from referral incentives relating to these services.