

PLOT

6

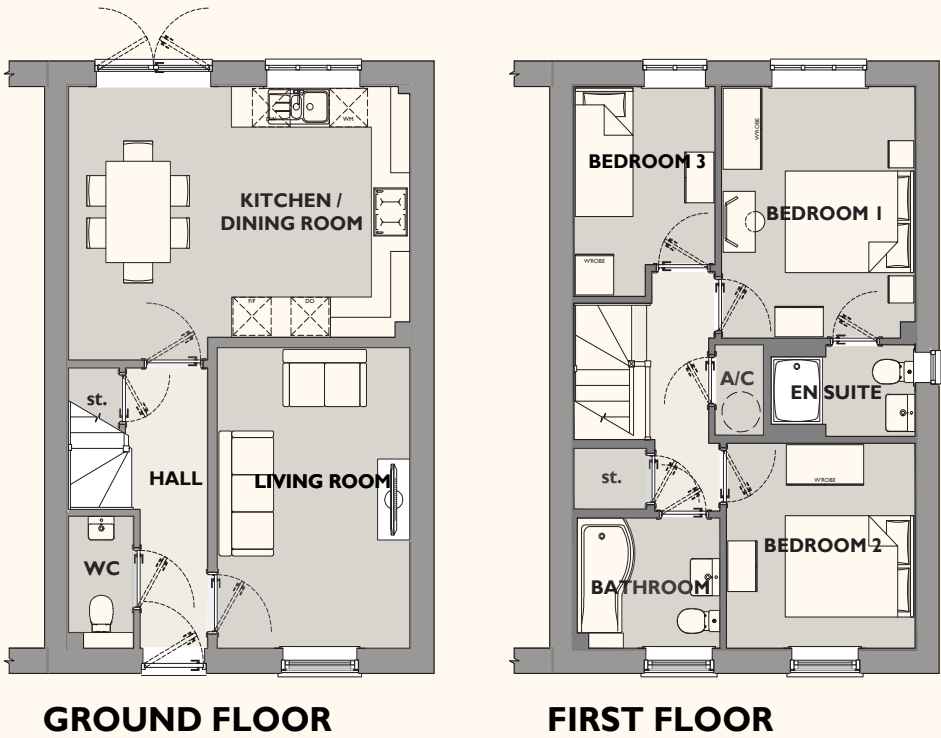
THREE BEDROOM HOME

FIRST FLOOR

- Bedroom 1
- 3.01 x 3.72m (9'11 x 12'2ft max)
-
- Bedroom 2
- 2.93 x 3.03m (9'8 x 9'11ft max)
-
- Bedroom 3
- 2.19 x 3.09m (7'2 x 10'2ft max)

GROUND FLOOR

- Living Room
- 2.99 x 4.44m (9'10 x 14'7 ft max)
-
- Kitchen / Dining Room
- 5.30m x 4.04 m (17'5 x 13'3 ft max)



(Please note, floor plans and dimensions are taken from architectural drawings and are for guidance only. Dimensions stated are within a tolerance of plus or minus 50mm. Overall dimensions are usually stated and there may be projections into these.) Furniture shown on floor plans is for illustrative purposes only.



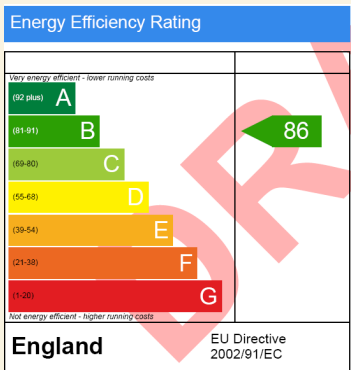
TWO BEDROOM SEMI DETACHED HOUSE
GARAGE & 1 PARKING SPACE

SECTOR 9A PLOT 6
947 SQ.FT



BUYING YOUR NEW CG FRY & SON HOME

YOU'LL BE BUYING YOUR NEW HOME FROM A FAMILY OWNED COMPANY WITH CONSISTENT AWARDS YEAR ON YEAR FOR THE QUALITY OF HOUSING AND ALSO OUR OUTSTANDING AND CONSIDERATE SITE MANAGERS.



CONTACT DETAILS

For more information contact us on

01637 871694

10am - 5pm Tuesday - Friday

10am - 4pm Saturday / bank-holidays

nansledansales@cgfry.co.uk

C.G. Fry & Son Sales Office
Chi Myghtern Lewdh,
Kresennik Pennfenten,
Nansledan, Newquay
TR8 4FA

Our Knowledgeable Sales Negotiators will guide you through the house buying process and keep you informed of progress. CG Fry & Son homes are designed for modern living with practical family space, natural light and high quality fittings. Encompassing new technologies your home will be energy efficient, saving you money on utility bills. Our specialist building warranty is in place to ensure your peace of mind.



CG FRY & SON
DEVELOPMENT

