

## 24 Spinnakers

Pentire Avenue, Newquay, TR7 1TT

david ball

| LUXURY COLLECTION |





Offered with no onward chain, 24Spinnakers is a stunning penthouse apartment located in the highly desirable Pentire Peninsula, just a short walk from both Pentire Headland and the iconic Fistral Beach. This spacious and well-presented property features a bright open-plan living and dining area, two generously sized double bedrooms—including a master with en-suite shower room—a separate family bathroom, and spectacular views over Fistral Beach. With secure entry and allocated parking, this apartment presents an ideal opportunity as a permanent residence, holiday home, or investment property in one of Newquay's most sought-after coastal locations.

**Leasehold £450,000**

## Key Features

- NO ONWARD CHAIN
- LARGE LIVING AREA
- STUNNING VIEWS OVER FISTRAL AND THE HEADLAND
- ENSUITE TO MASTER BEDROOM
- SOUGHT AFTER LOCATION
- GOOD HOLIDAY LET POTENTIAL
- ONE ALLOCATED PARKING SPACE
- PENTHOUSE



## The Property

Access to this private penthouse is via a lift to the second floor, followed by a short flight of stairs to the third floor. The apartment enjoys a genuinely spacious layout with a contemporary style, perfectly suited for modern coastal living. The large open-plan living and kitchen area is a standout feature, fitted with an extensive range of wall and base units, including a central island. Quality integrated appliances include an electric oven, gas hob, stainless steel extractor hood, fridge, freezer, and washer dryer. This light-filled space opens onto a private balcony, where you can enjoy breath-taking panoramic views across Fistril Bay and along the rugged coastline. Both bedrooms are generously proportioned doubles. The master bedroom benefits from a modern en-suite bathroom, while the second bedroom is served by a well-appointed main bathroom featuring a shower over the bath. Further features include UPVC double glazing throughout, a mains gas-fired central heating system, and an allocated parking space.







The Penthouse is suited in the purpose build block of apartments - Spinnakers, one of the closest apartment blocks to the Pentire headland. The property benefits from private allocated parking along with extra spaces allocated for visitors, there are pockets of communal lawns that can be used by any of the residents as a place for relaxing, along with tidy indoor communal areas and secure access to all apartments.

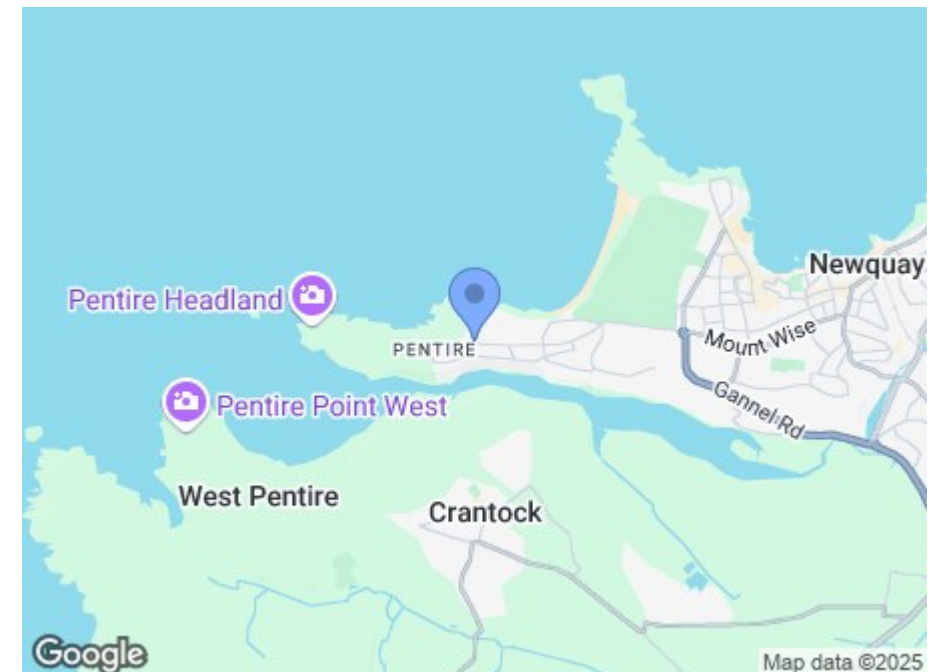






## The Location

Positioned towards the very tip of Newquay's desirable Pentire Peninsula, Apartment 24 at Spinnakers is a truly superb penthouse offering some of the finest sea views in the area. Set within well-kept communal gardens, the development provides a peaceful setting just a short stroll from the golden sands of Fistral Beach. Located in the sought-after Pentire area, Newquay offers a vibrant mix of shopping, schools, bars, and restaurants, with convenient bus and rail connections to surrounding areas. Truro lies approximately 14 miles away, while the charming fishing port of Padstow is within 16 miles. For international travel, Newquay Airport is just seven miles away, offering direct flights to destinations such as Faro, Alicante, and Dublin.

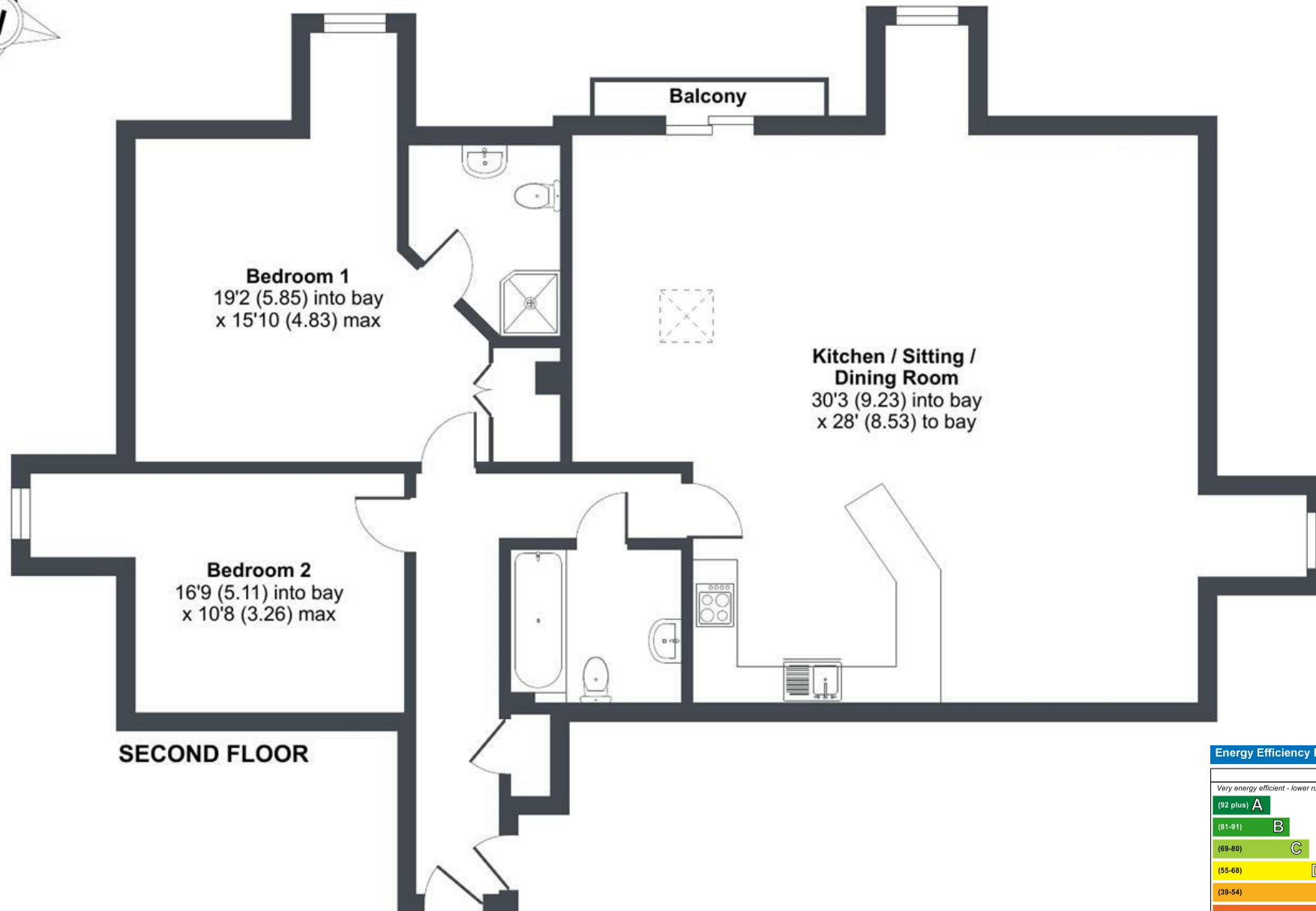




# Spinnakers, Pentire Avenue, Newquay, TR7

Approximate Area = 1319 sq ft / 122.5 sq m

For identification only - Not to scale



SECOND FLOOR



Floor plan produced in accordance with RICS Property Measurement 2nd Edition, Incorporating International Property Measurement Standards (IPMS2 Residential). © ncthecom 2025. Produced for David Ball Agencies. REF: 1286181

Energy Efficiency Rating		
	Current	Potential
Very energy efficient - lower running costs		
(92 plus) A		
(81-91) B		
(69-80) C	80	80
(55-68) D		
(39-54) E		
(21-38) F		
(1-20) G		
Not energy efficient - higher running costs		
England & Wales		
EU Directive 2002/91/EC		







david ball  
| LUXURY COLLECTION |

01637 850850  
[www.davidball-luxury.co.uk](http://www.davidball-luxury.co.uk)



[e.sales@dba.estate](mailto:e.sales@dba.estate)

34 East Street, Newquay, Cornwall TR7 1BH

1. Particulars: these particulars are not an offer or contract nor part of one. You should not rely on statements by David Ball Agencies (DBA) in the particulars or by word of mouth or in writing as being factually accurate about the property, its condition or value. Neither DBA nor any joint agent has any authority to make any representation about the property or development and accordingly any information given is entirely without responsibility in the part of the agents, sellers or lessors. 2. Images paragraphs and other information; any computer generated images, plans, drawings, accommodation schedules, specifications details or other information provided about the property ("information") are indicative only. Any such information may change at any time and must not be relied upon as being factually accurate about the property. Any photographs are indicative of the quality and style of the development and location and do not represent the actual fitting and furnishing at this development. 3. Regulations; any reference to alterations to the property or use of any part of the development is not a statement that any necessary planning, building regulations or other consents has been obtained. These matter must be verified by an intending purchaser. 4. Fixtures and fittings; supplied services and appliances have not been tested by the vendors agent. Prospective purchasers are advised to make their own enquiries. 5. All dimensions are approximates.