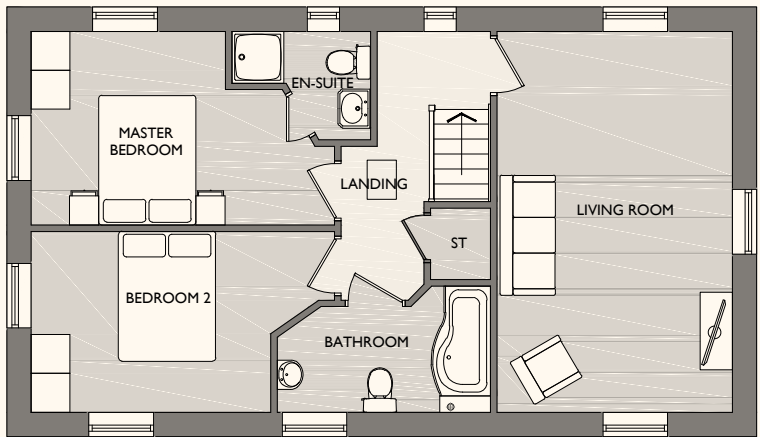


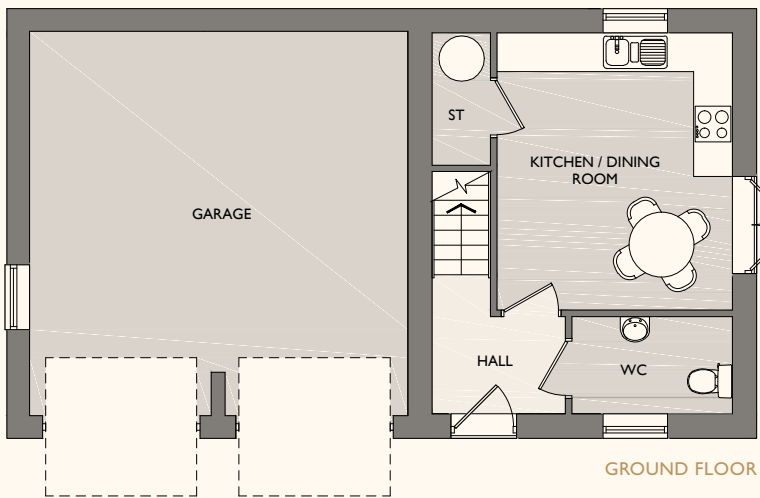


PLOT 200

Plot 200
TWO BEDROOM HOME



FIRST FLOOR



GROUND FLOOR

FIRST FLOOR

Master Bedroom
4.6 x 2.9 m max
(15' x 9'5" max)
Bedroom 2
3.7 x 2.7 m max
(12'1" x 8'8" max)
Living Room
3.6 x 5.8 m max
(11'8" x 19' max)

GROUND FLOOR

Kitchen / Dining Room
3.6 x 4.2 m max
(11'8" x 13'7" max)

BUYING YOUR NEW CG FRY & SON HOME

YOU'LL BE BUYING YOUR NEW HOME FROM A FAMILY OWNED COMPANY WITH CONSISTENT AWARDS YEAR ON YEAR FOR THE QUALITY OF HOUSING AND ALSO OUR OUTSTANDING AND CONSIDERATE SITE MANAGERS.

Our knowledgeable Sales Negotiators will guide you through the house buying process and keep you informed of progress. CG Fry & Son homes are designed for modern living with practical family space, natural light and high quality fittings. Encompassing new technologies your home will be energy efficient, saving you money on utility bills.

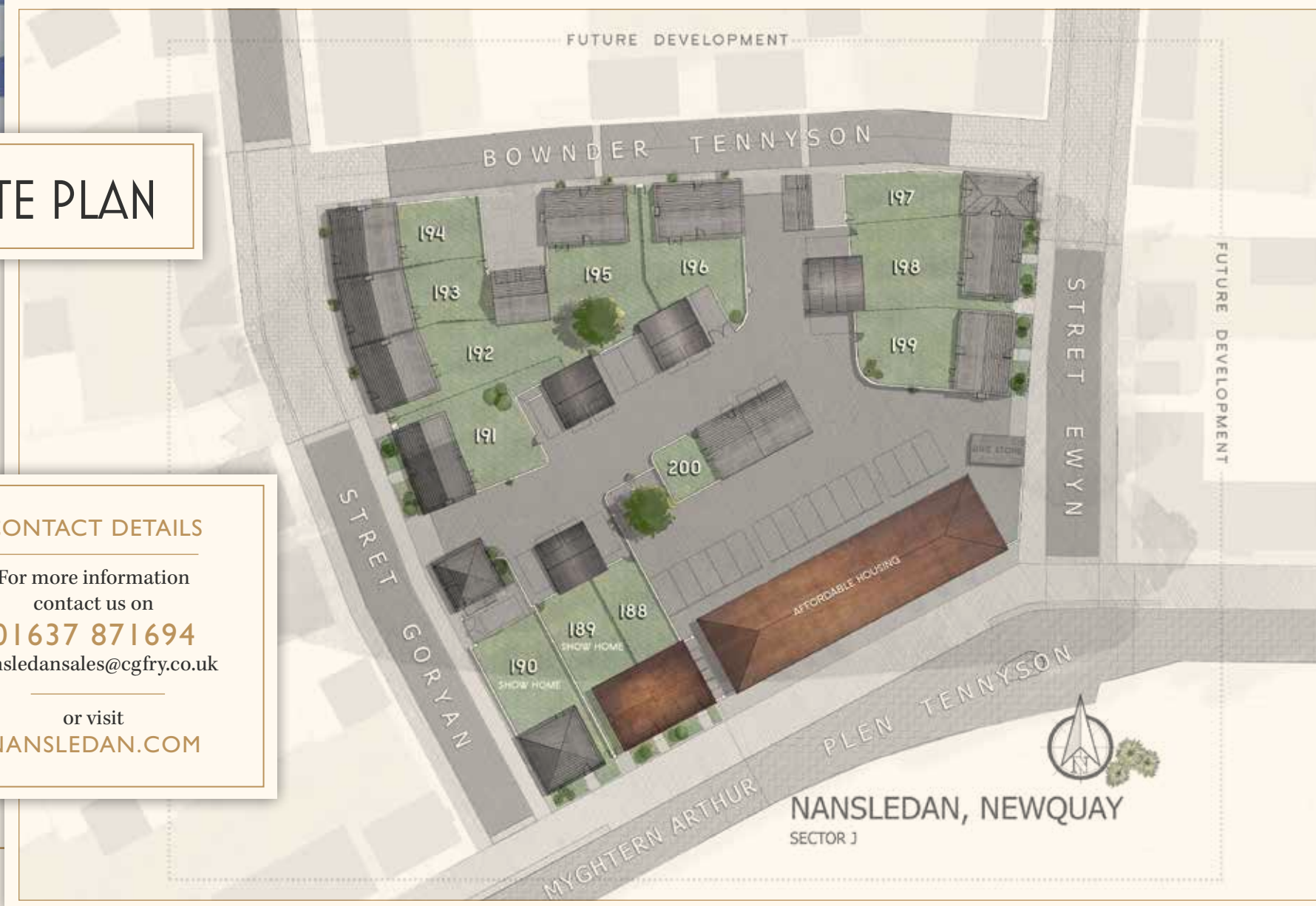
Our specialist building warranty is in place to ensure your peace of mind.



SITE PLAN

CONTACT DETAILS

For more information
contact us on
01637 871694
nansledansales@cgfry.co.uk
or visit
NANSLEDAN.COM



NANSLEDAN, NEWQUAY
SECTOR J

PLOTS 199/198 & 197

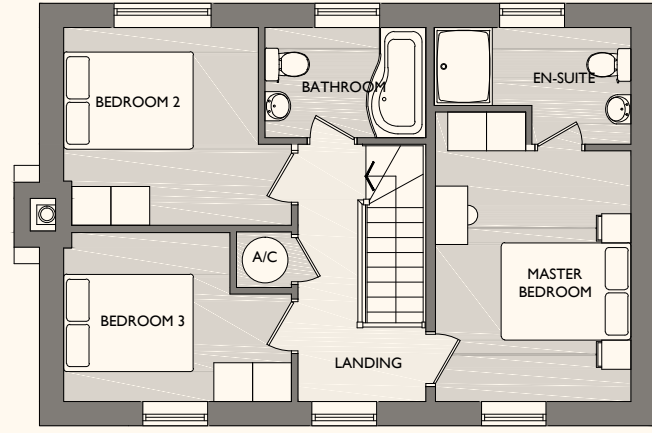


PLOTS 196 & 195

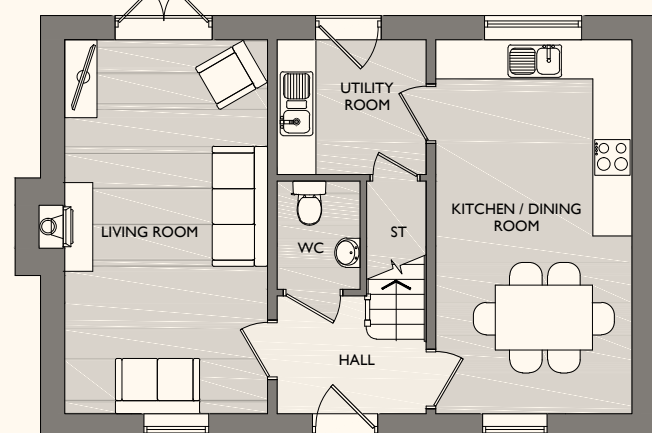


Plots 199 & 198

THREE BEDROOM HOME



FIRST FLOOR



GROUND FLOOR

FIRST FLOOR

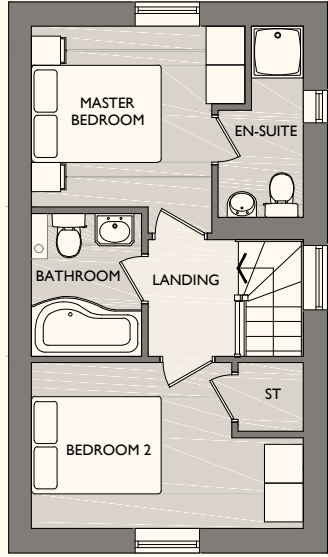
Master Bedroom
3.0 x 3.8 m max
(9'8" x 12'4" max)
Bedroom 2
3.0 x 3.0 m max
(9'8" x 9'8" max)
Bedroom 3
3.5 x 2.6 m max
(11'4" x 8'5" max)

GROUND FLOOR

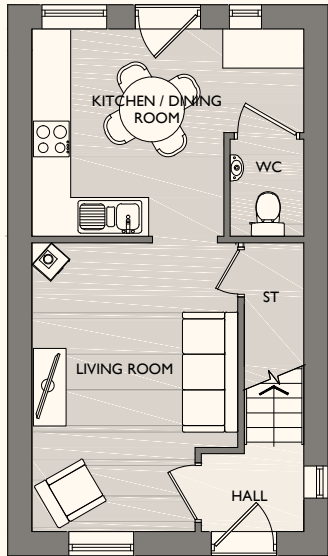
Living Room
3.1 x 5.7 m max
(10'1" x 18'7" max)
Kitchen / Dining Room
3.0 x 5.7 m max
(9'8" x 18'7" max)
Utility Room
2.3 x 2.0 m max
(7'5" x 6'5" max)

Plot 197

TWO BEDROOM HOME



FIRST FLOOR



GROUND FLOOR

FIRST FLOOR

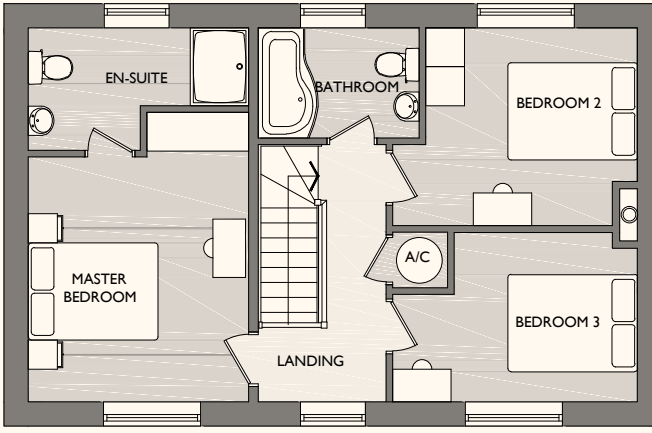
Master Bedroom
3.2 x 2.7 m max
(10'4" x 8'8" max)
Bedroom 2
4.1 x 2.5 m max
(13'4" x 8'2" max)

GROUND FLOOR

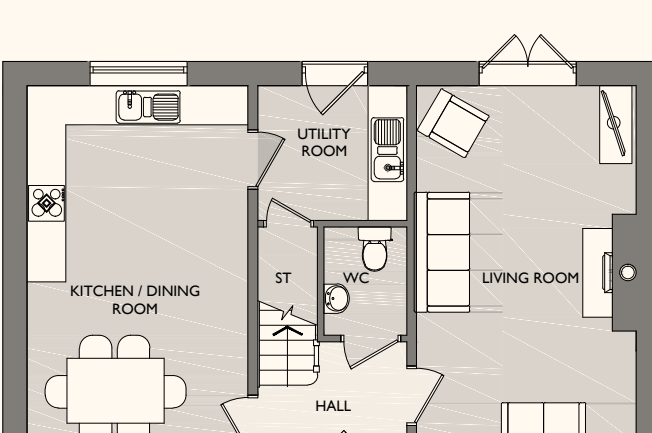
Living Room
3.1 x 4.4 m max
(10'1" x 14'4" max)
Kitchen / Dining Room
4.1 x 3.1 m max
(13'4" x 10'1" max)

Plot 196

THREE BEDROOM HOME



FIRST FLOOR



GROUND FLOOR

FIRST FLOOR

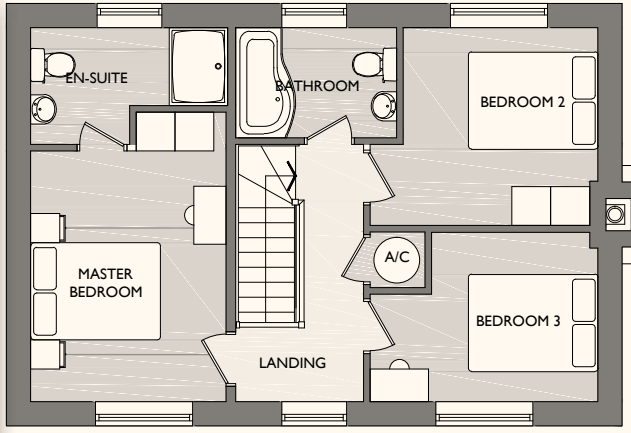
Master Bedroom
3.4 x 3.7 m max
(11'1" x 12'1" max)
Bedroom 2
3.2 x 3.0 m max
(10'4" x 9'8" max)
Bedroom 3
3.7 x 2.6 m max
(12'1" x 8'5" max)

GROUND FLOOR

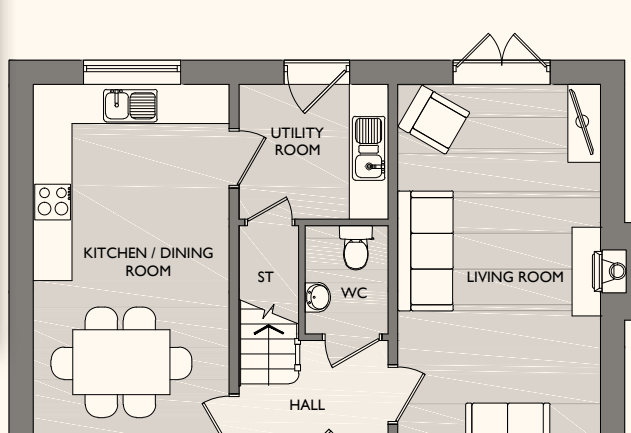
Living Room
3.3 x 5.7 m max
(10'8" x 18'7" max)
Kitchen / Dining Room
3.4 x 5.7 m max
(11'1" x 18'7" max)

Plot 195

THREE BEDROOM HOME



FIRST FLOOR



GROUND FLOOR

FIRST FLOOR

Master Bedroom
3.0 x 3.8 m max
(9'8" x 12'4" max)
Bedroom 2
3.0 x 3.0 m max
(9'8" x 9'8" max)
Bedroom 3
3.5 x 2.6 m max
(11'4" x 8'5" max)

GROUND FLOOR

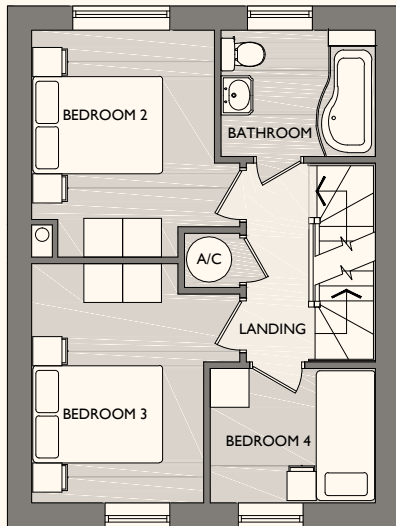
Living Room
3.0 x 5.7 m max
(9'8" x 18'7" max)
Kitchen / Dining Room
3.1 x 5.7 m max
(10'1" x 18'7" max)



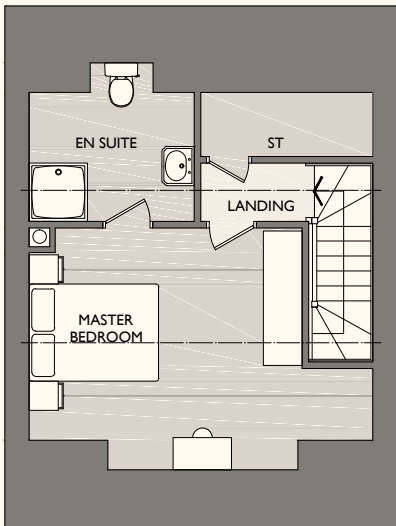
PLOT 188

Plot 188

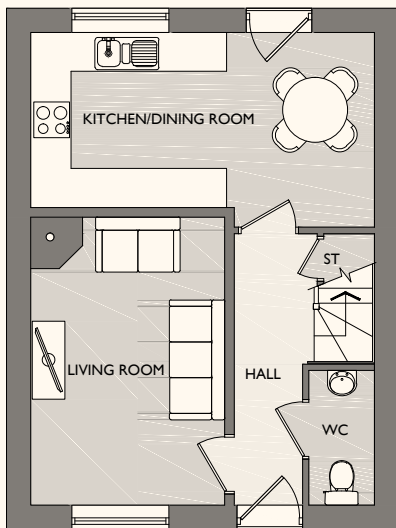
FOUR BEDROOM HOME



FIRST FLOOR



SECOND FLOOR



GROUND FLOOR

FIRST FLOOR

Bedroom 2
3.2 x 3.5 m max
(10'4" x 9'2" max)
Bedroom 3
3.2 x 3.6 m max
(10'4" x 11'8" max)
Bedroom 4
2.5 x 2.05 m max
(8'4" x 6'9" max)

GROUND FLOOR

Living Room
3.0 x 4.4 m max (9'8" x 14'4" max)
Kitchen / Dining Room
5.3 x 3.0 m max (17'3" x 9'8" max)

SECOND FLOOR

Master Bedroom
5.3 x 2.95 m max
(17'3" x 9'6" max)
to 1.8m head height

BUYING YOUR NEW CG FRY & SON HOME

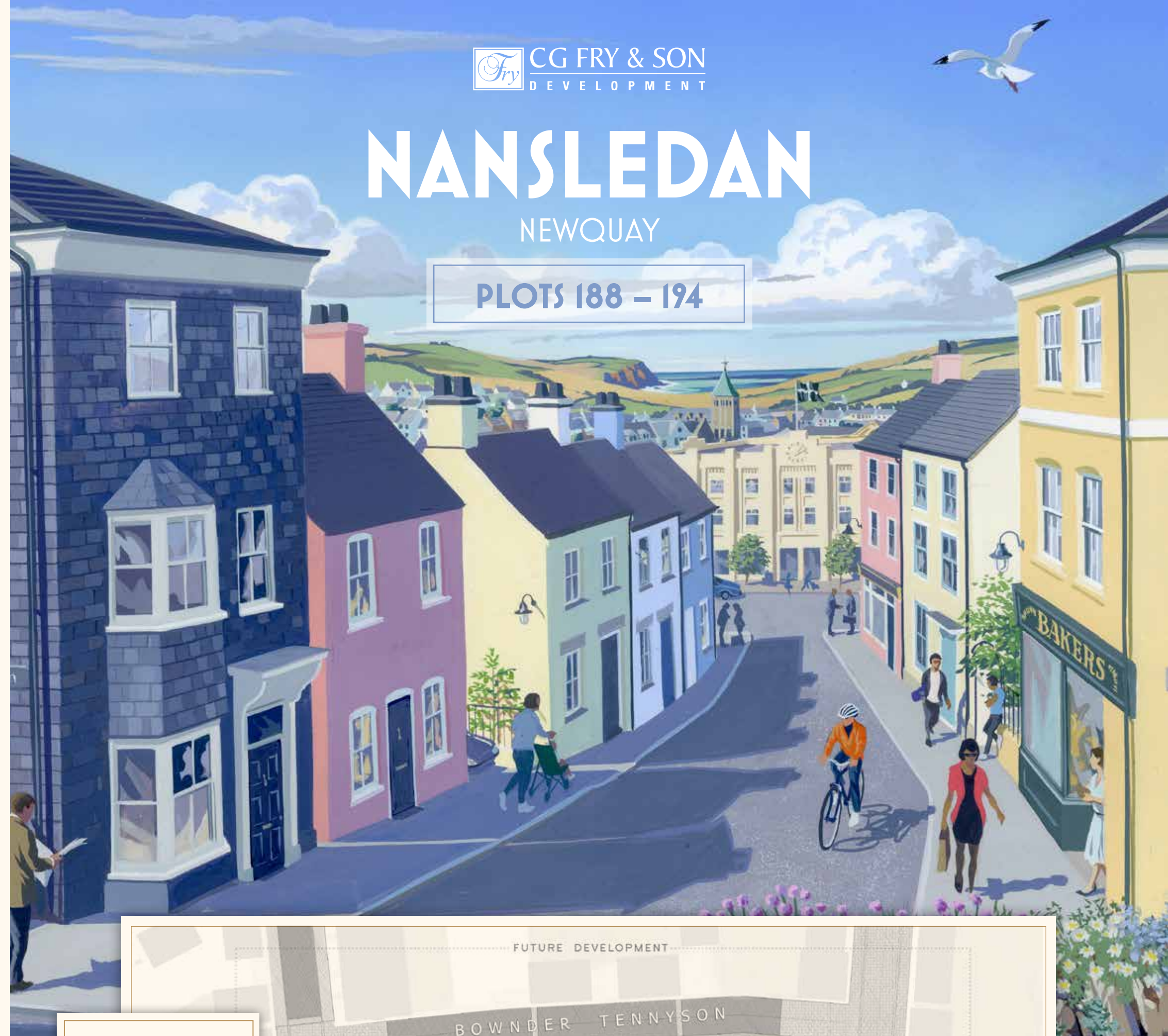
YOU'LL BE BUYING YOUR NEW HOME FROM A FAMILY OWNED COMPANY WITH CONSISTENT AWARDS YEAR ON YEAR FOR THE QUALITY OF HOUSING AND ALSO OUR OUTSTANDING AND CONSIDERATE SITE MANAGERS.

Our knowledgeable Sales Negotiators will guide you through the house buying process and keep you informed of progress. CG Fry & Son homes are designed for modern living with practical family space, natural light and high quality fittings. Encompassing new technologies your home will be energy efficient, saving you money on utility bills.

Our specialist building warranty is in place to ensure your peace of mind.



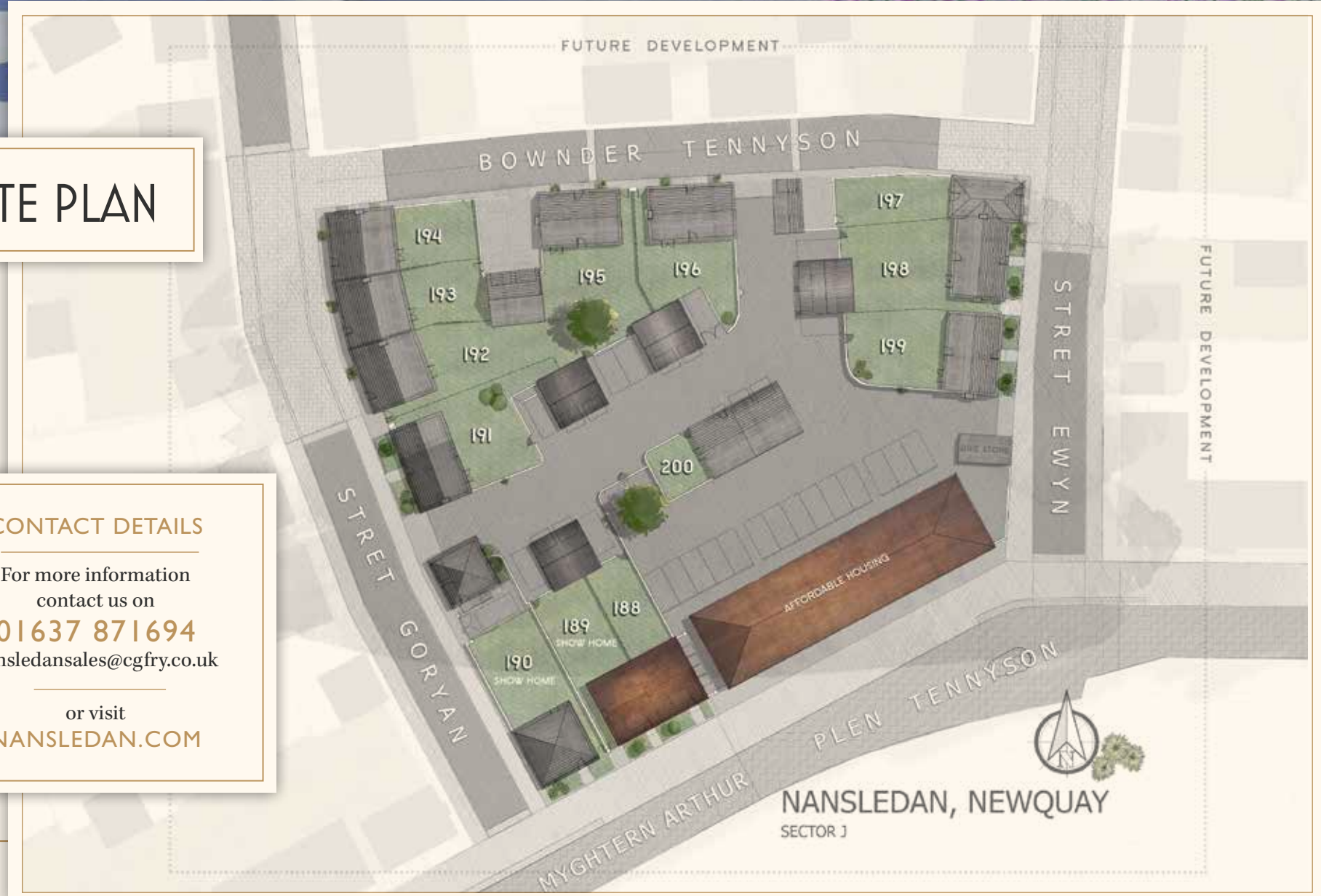
CG FRY & SON
DEVELOPMENT



SITE PLAN

CONTACT DETAILS

For more information
contact us on
01637 871694
nansledansales@cgfry.co.uk
or visit
NANSLEDAN.COM



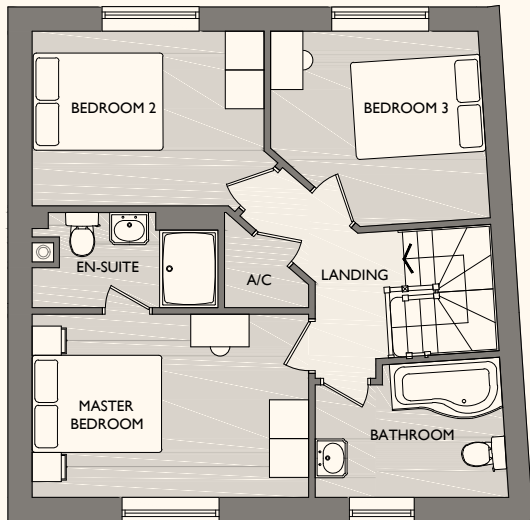
PLOTS 194 & 193



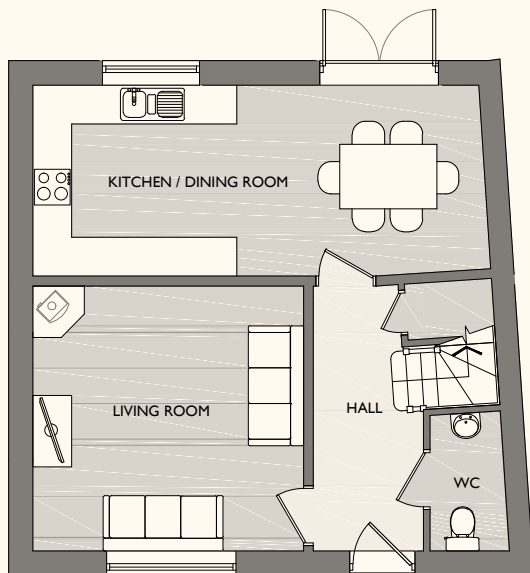
PLOTS 192 & 191



Plot 194
THREE BEDROOM HOME



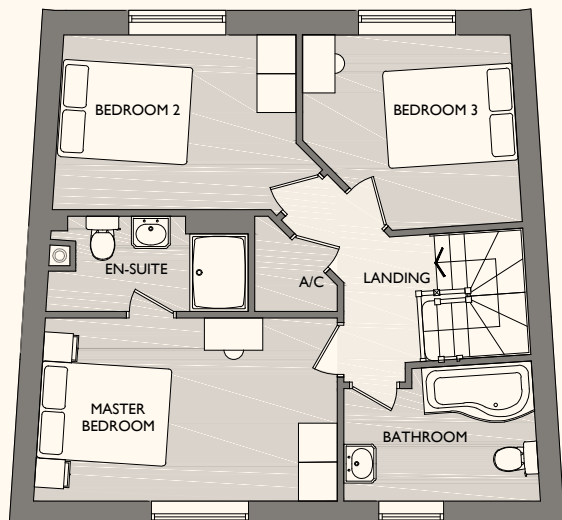
FIRST FLOOR



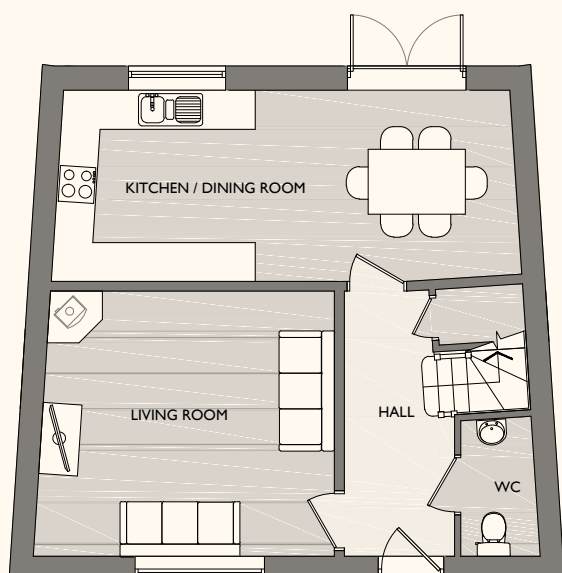
GROUND FLOOR

- FIRST FLOOR**
- Master Bedroom
4.2 x 2.8 m max
(13'7" x 9'1" max)
 - Bedroom 2
3.5 x 2.7 m max
(11'4" x 8'8" max)
 - Bedroom 3
3.2 x 2.8 m max
(10'4" x 9'1" max)
- GROUND FLOOR**
- Living Room
4.1 x 4.0 m max
(13'4" x 13'1" max)
 - Kitchen / Dining Room
6.9 x 2.9 m max
(22'6" x 9'5" max)

Plot 193
THREE BEDROOM HOME



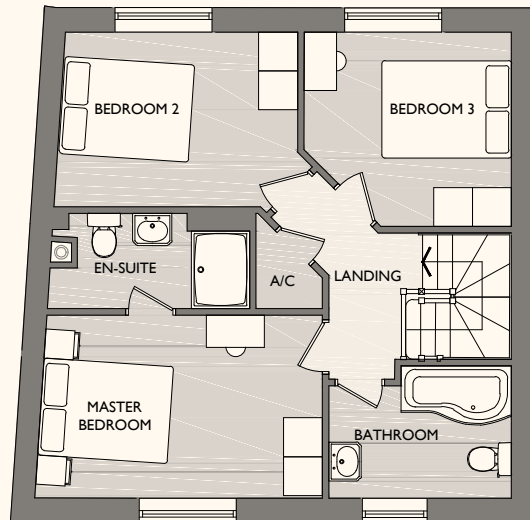
FIRST FLOOR



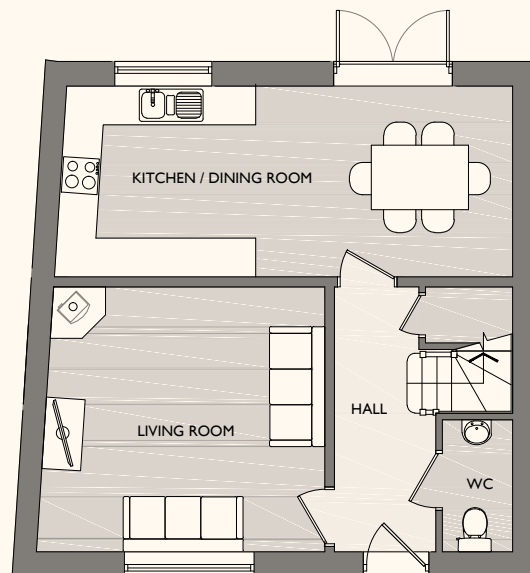
GROUND FLOOR

- FIRST FLOOR**
- Master Bedroom
4.5 x 2.8 m max
(14'7" x 9'1" max)
 - Bedroom 2
3.6 x 2.7 m max
(11'8" x 8'1" max)
 - Bedroom 3
3.2 x 2.8 m max
(10'4" x 9'1" max)
- GROUND FLOOR**
- Living Room
4.5 x 4.0 m max
(14'7" x 13'1" max)
 - Kitchen / Dining Room
7.0 x 2.9 m max
(22'9" x 9'5" max)

Plot 192
THREE BEDROOM HOME



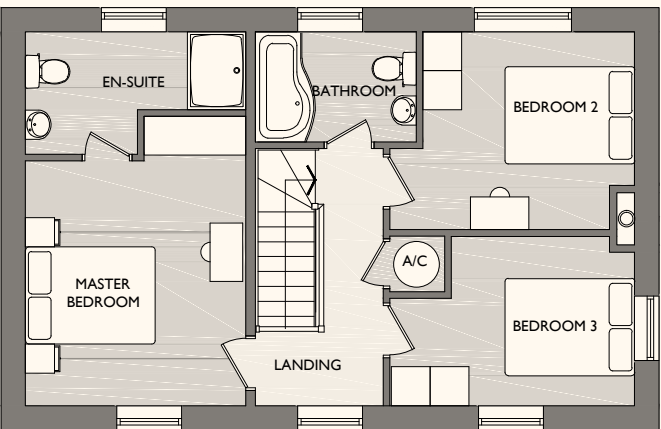
FIRST FLOOR



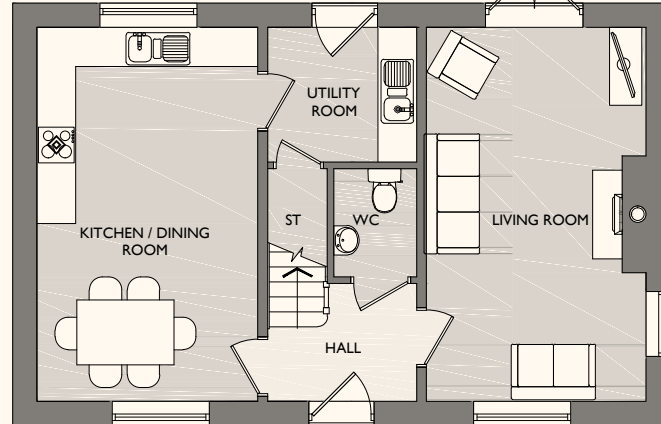
GROUND FLOOR

- FIRST FLOOR**
- Master Bedroom
4.3 x 2.8 m max
(14'1" x 9'18" max)
 - Bedroom 2
3.6 x 2.7 m max
(11'8" x 8'10" max)
 - Bedroom 3
3.2 x 2.9 m max
(10'6" x 9'5" max)
- GROUND FLOOR**
- Living Room
4.3 x 4.0 m max
(14'1" x 13'1" max)
 - Kitchen / Dining Room
6.9 x 2.9 m max
(22'6" x 9'6" max)

Plot 191
THREE BEDROOM HOME



FIRST FLOOR



GROUND FLOOR

- FIRST FLOOR**
- Master Bedroom
3.4 x 3.7 m max
(11'1" x 12'1" max)
 - Bedroom 2
3.7 x 3.0 m max
(12'1" x 9'8" max)
 - Bedroom 3
3.7 x 2.6 m max
(12'1" x 8'5" max)
- GROUND FLOOR**
- Living Room
3.3 x 5.7 m max
(10'8" x 18'7" max)
 - Kitchen / Dining Room
3.4 x 5.7 m max
(11'1" x 18'7" max)
 - Utility Room
2.3 x 2.0 m max
(7'5" x 6'5" max)