



Blue Jay's Cottage, 19 Broad Street, Newquay, TR7 1NE

david ball
Agencies

Nestled in the heart of Newquay, Blue Jay's, Broad Street has become one of the town's most desirable spots, stepped in local history and charm and perfectly positioned between the vibrant town centre and the iconic Fistral Beach. This beautiful period cottage combines charm and character with modern comfort, offering light, airy accommodation with a distinctive coastal vibe. This property is currently operating a successful holiday let but would lend itself perfectly as a permanent family home in the heart of Newquay. Early internal viewing is highly recommended

Guide Price £395,000 Freehold

Key Features

- Chain Free
- Close To Fistral Beach
- Shaker Style Fitted Kitchen
- Garage with Parking
- Town Centre Location
- Two Reception Rooms With Feature Open Fires
- Courtyard Style Rear Enclosed Garden
- Early Viewing Highly Recommended

The Property

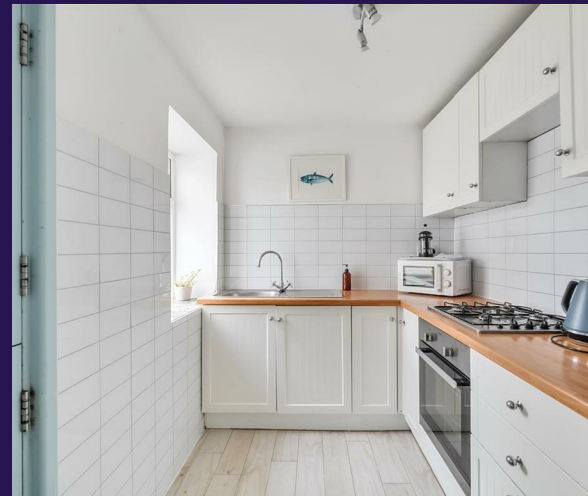
Blue jays is currently laid out over two floors and currently the versatile accommodation as follows

Ground Floor:

The property boasts two inviting reception rooms, each featuring a characterful open fireplace and wooden flooring, creating a warm and welcoming atmosphere. The ground floor is further enhanced by a stylish Shaker-style kitchen, fitted with a range of base, wall, and drawer units. The roll-top work surfaces incorporate an inset stainless steel sink with a mixer tap, while integrated appliances include an electric oven and a four-ring gas hob. There is also space for an under-counter fridge, completing this well-equipped kitchen.

First Floor:

The first floor features two generously proportioned double bedrooms, with the principal bedroom featuring a beautiful feature fireplace. Completing the first floor is a recently updated family bathroom, which includes a modern double walk-in shower, WC, wash basin, heated towel rail, and an airing cupboard





Externally

To the front of the cottage is a wall front garden laid to paving. To the rear is courtyard style garden laid mainly to artificial lawn. The garage offers an electric door providing off street parking whilst benefiting from having power connected and plumbing for a washing machine.

Location

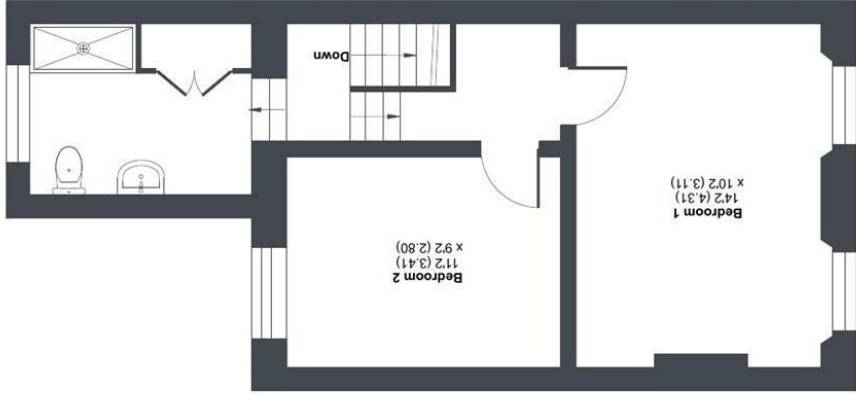
Broad Street is perfectly situated off Alma Place and Trevena Terrace, right in the heart of Old Newquay. Just steps away from the scenic Newquay Harbour and the family-friendly Towan Beach, this charming two double bedroom cottage originally built as Coastguard and fisherman's cottages offers an enviable location for both lifestyle and convenience.

Transport links are excellent, with bus and rail services connecting to nearby areas, while Newquay Airport, located just seven miles away, provides access to further afield. Broad Street offers the perfect blend of historic charm and modern convenience in one of Newquay's most desirable locations.

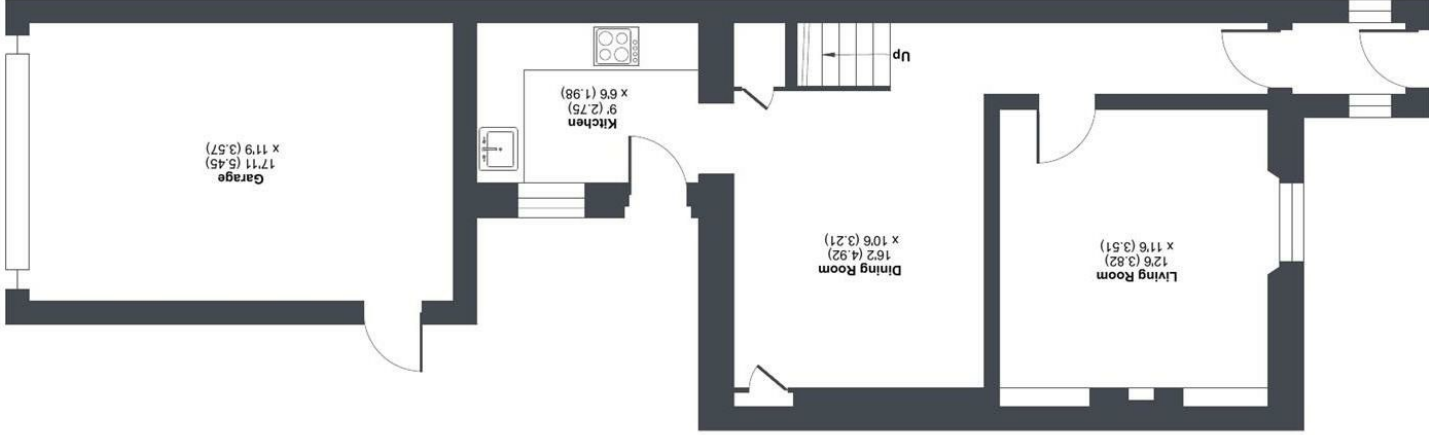


Broad Street, Newquay, TR7

Approximate Area = 864 sq ft / 80.2 sq m
Garage = 209 sq ft / 19.4 sq m
Total = 1073 sq ft / 99.6 sq m
For identification only - Not to scale



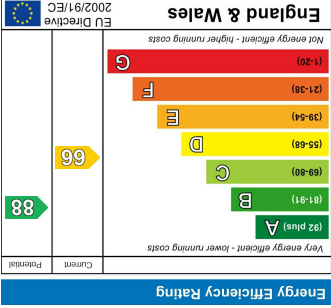
FIRST FLOOR



GROUND FLOOR

Floor plan produced in accordance with RICS Property Measurement 2nd Edition, incorporating International Property Measurement Standards (IPMS2 Residential). © mchecom 2024.

Produced for David Ball Agencies. REF: 1218541



1. Particulars: these particulars are not an offer or contract nor part of one. You should not rely on statements by David Ball Agencies (DBA) in the particulars or by word of mouth or in writing as being factually accurate about the property, its condition or value. Neither DBA nor any joint agent has any authority to make any representation about the property or development and accordingly any information given is entirely without responsibility in the part of the agents, sellers or lessors. 2. Images paragraphs and other information: any computer generated images, plans, drawings, accommodation schedules, specifications details or other information provided about the property ("information") are indicative only. Any such information may change at any time and must not be relied upon as being factually accurate about the property. Any photographs are indicative of the quality and style of the development and do not represent the actual fitting and furnishing at this development. 3. Regulations: any reference to alterations to the property or use of any part of the development is not a statement that any necessary planning, building regulations or other consents has been obtained. These matters must be verified by an intending purchaser. 4. Fixtures and fittings: supplied services and appliances have not been tested by the vendors agent. Prospective purchasers are advised to make their own enquiries. 5. All dimensions are approximate.