

# PLOT 151

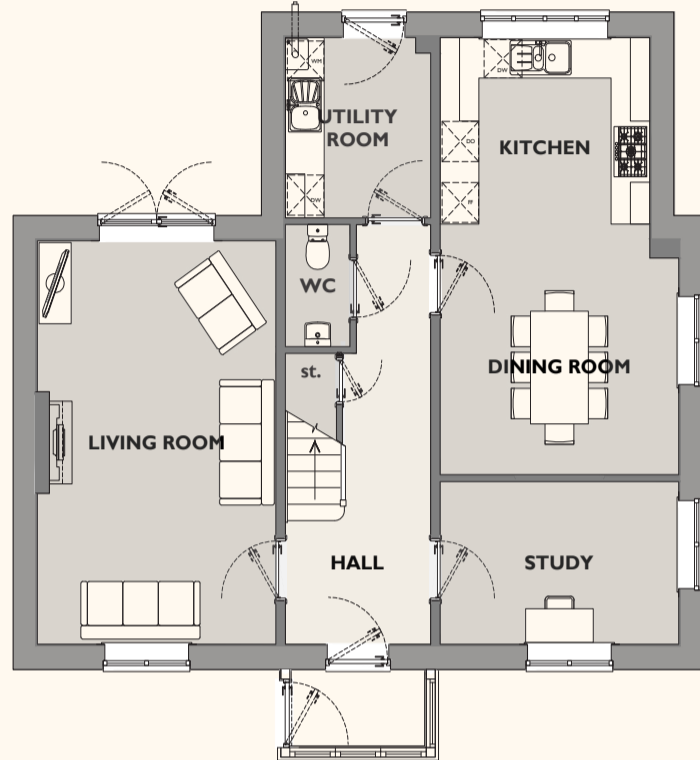
## FOUR BEDROOM HOME

### GROUND FLOOR

Living Room  
3.70 x 5.95m (12'1 x 19'6ft max)

Kitchen / Dining Room  
3.70 x 6.45m (12'1 x 21'1ft max)

Study  
3.70 x 2.40m (12,1 x 7'10ft max)



**GROUND FLOOR**

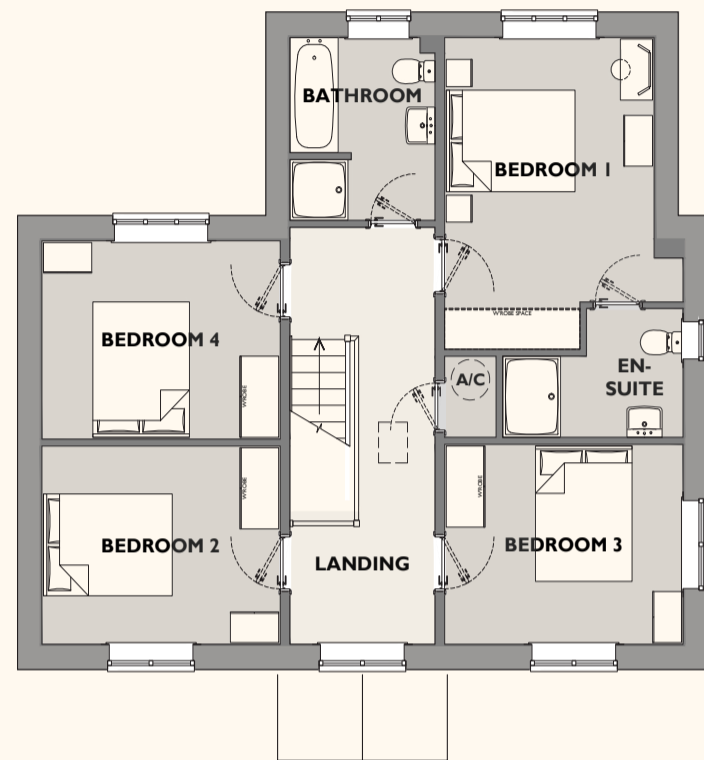
### FIRST FLOOR

Bedroom 1  
3.25x 3.9m (14'8 x 9'0ft max)  
(Dimension excluding recess & wardrobe recess)

Bedroom 2  
3.7 x 2.92m (12'1 x 9'6ft max)

Bedroom 3  
3.70 x 2.95m (12'1 x 9'8ft max)

Bedroom 4  
3.70 x 2.92m (12'1 x 9'6ft max)



**FIRST FLOOR**

(Please note, floor plans and dimensions are taken from architectural drawings and are for guidance only. Dimensions stated are within a tolerance of plus or minus 50mm. Overall dimensions are usually stated and there may be projections into these.) Furniture shown on floor plans is for illustrative purposes only.



# SECTOR 7 PLOT 151



## NEWQUAY NANSLEDAN DEVELOPMENT CG FRY & SON



### BUYING YOUR NEW CG FRY & SON HOME

YOU'LL BE BUYING YOUR NEW HOME FROM A FAMILY OWNED COMPANY WITH CONSISTENT AWARDS YEAR ON YEAR FOR THE QUALITY OF HOUSING AND ALSO OUR OUTSTANDING AND CONSIDERATE SITE MANAGERS.



**CONTACT DETAILS**  
For more information contact us on  
**01637 871694**  
10am - 5pm Tuesday - Friday  
10am - 4pm Saturday / bank-holidays  
nansledansales@cgfry.co.uk  
  
C.G. Fry & Son Sales Office  
Chi Myghtern Lewdh,  
Kresennik Pennfenten,  
Nansledan, Newquay  
TR8 4FA

Our Knowledgeable Sales Negotiators will guide you through the house buying process and keep you informed of progress. CG Fry & Son homes are designed for modern living with practical family space, natural light and high quality fittings. Encompassing new technologies your home will be energy efficient, saving you money on utility bills. Our specialist building warranty is in place to ensure your peace of mind.

