



Apartment 4, 236 Henvver Road, Newquay, TR7 3EH

david ball
Agencies

An exciting opportunity to purchase this first floor, brand new, one bedroom apartment comprising an open plan living space, double bedroom and contemporary shower room. This stunning apartment benefits from a single allocated parking space and a south facing balcony accessed through the open plan living space, making this the ideal first home, investment opportunity, or second home. Early viewing is highly recommended.

£255,000 Leasehold

Key Features

- First Floor Apartment
- Open Plan Living Area
- Contemporary Shower Room
- Secure Door Entry System
- Balcony
- Double Bedroom
- Modern Fitted Kitchen
- Allocated Parking

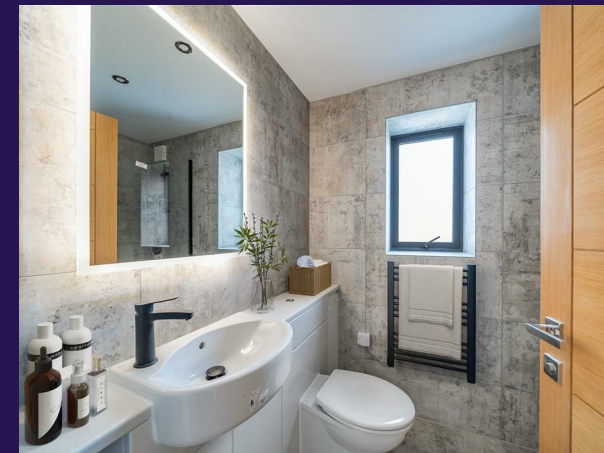
Location

Henver Road is one of the two main routes into Cornwall's premier holiday resort. It is close to the shopping centre at Chester Road, the beaches at Lusty Glaze and Tolcarne, the Barrowfields and Newquay town centre is a level walk. The senior schools of Treviglas and Tretherras along with the St Columb Minor Academy are in close proximity of the property. The town of Newquay benefits from a range of shopping, schooling and banking facilities as well as an array of fashionable bars, restaurants and nightclubs. The town also boasts an historic picturesque working fishing harbour and some of Europe's finest coastline. There is a bus and rail service to outlying areas and Newquay Airport is approximately seven miles distance from the town.

Entrance Hall

Wooden entrance door from communal hall. Doors to subsequent accommodation. Electric Radiator. Telephone entry system.

Open Plan Living Area





Lounge

uPVC double glazed window and patio door opening onto the south facing sun terrace. Electric Radiator.

Kitchen

Modern fitted kitchen to include a range of wall, base and drawer units with Quartz stone worktops and undermounted stainless steel sink with milled drainer. Integrated appliances to include AEG electric oven with induction hob and extractor above, slimline dishwasher, washing machine and undercounter fridge.

Bedroom One

Dual aspect uPVC double glazed window to front and side.

Bathroom

uPVC double glazed opaque window. Walk in shower unit with electric overhead shower. Wall mounted wash hand basin with mixer tap and vanity unit below. LED mirror above.

External

Externally the property offers allocated parking and a balcony.

Leasehold Information

999 Year Lease

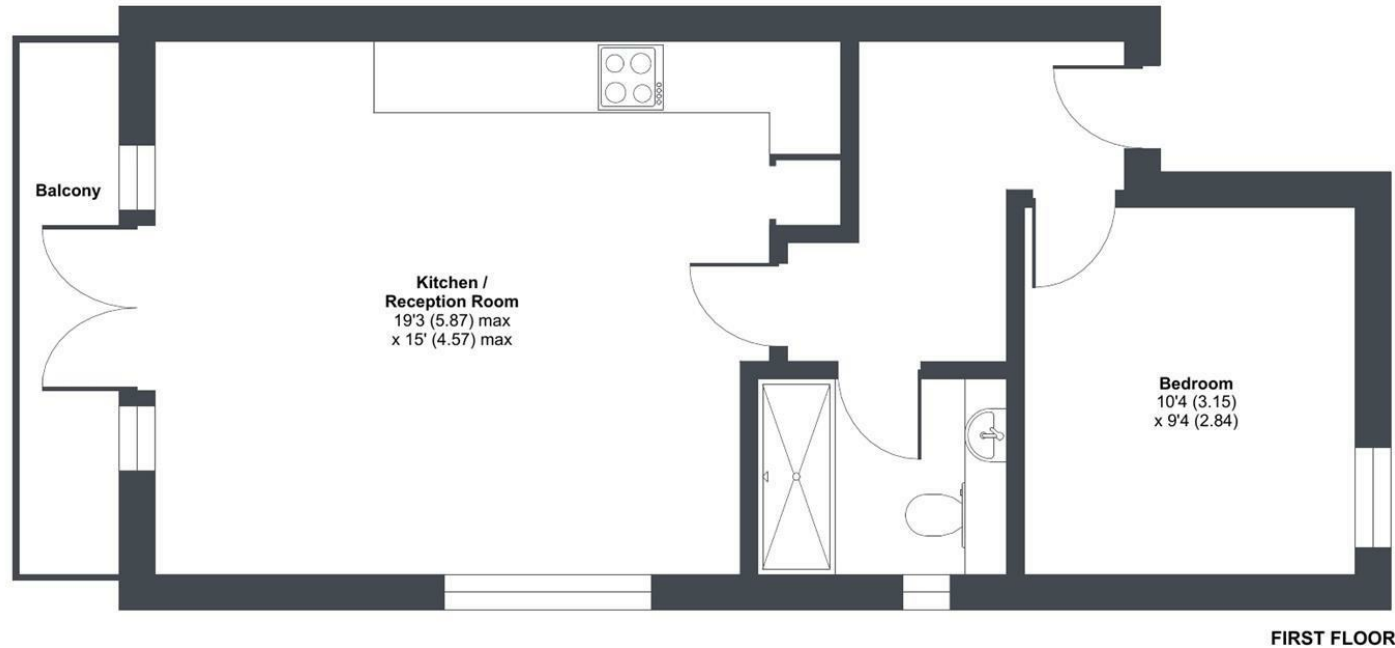
Service Charge - £1,000pa

Ground Rent - £200

Henver Road, Newquay, TR7

Approximate Area = 477 sq ft / 44.3 sq m

For identification only - Not to scale



FIRST FLOOR

Energy Efficiency Rating		Current	Potential
Very energy efficient - lower running costs			
(92 plus) A			
(81-91) B			
(69-80) C		75	75
(55-68) D			
(38-54) E			
(21-38) F			
(1-20) G			
Not energy efficient - higher running costs			
England & Wales		EU Directive 2002/91/EC	



Floor plan produced in accordance with RICS Property Measurement Standards incorporating International Property Measurement Standards (IPMS2 Residential). © nichecom 2023. Produced for David Ball Agencies. REF: 1126112

david ball
Agencies



rightmove

zoopla.co.uk

PrimeLocation.com

01637 **850850**
www.davidballagencies.co.uk

Connecting People & Property Perfectly

e.sales@dba.estate
34 East Street, Newquay, Cornwall TR7 1BH

1. Particulars: these particulars are not an offer or contract nor part of one. You should not rely on statements by David Ball Agencies (DBA) in the particulars or by word of mouth or in writing as being factually accurate about the property, its condition or value. Neither DBA nor any joint agent has any authority to make any representation about the property or development and accordingly any information given is entirely without responsibility in the part of the agents, sellers or lessors. 2. Images paragraphs and other information; any computer generated images, plans, drawings, accommodation schedules, specifications details or other information provided about the property ("information") are indicative only. Any such information may change at any time and must not be relied upon as being factually accurate about the property. Any photographs are indicative of the quality and style of the development and location and do not represent the actual fitting and furnishing at this development. 3. Regulations; any reference to alterations to the property or use of any part of the development is not a statement that any necessary planning, building regulations or other consents has been obtained. These matter must be verified by an intending purchaser. 4. Fixtures and fittings; supplied services and appliances have not been tested by the vendors agent. Prospective purchasers are advised to make their own enquiries. 5. All dimensions are approximates.