



7 Ocean View, Mount Wise, Newquay, TR7 2BH

david ball
Agencies

Experience luxury and investment potential in this fantastic apartment. Boasting secondary glazing, and energy efficiency. Situated in a prime location, this property offers seamless access to all Newquay has to offer. Step onto the balcony and savour panoramic views, while the open-plan layout invites versatile living arrangements. Engineered wood flooring throughout. This apartment promises both a sophisticated lifestyle and a lucrative investment opportunity. No chain. Viewing highly recommended.

Asking Price £270,000 Leasehold EPC-B

Key Features

- Fantastic views
- Open plan living
- Balcony
- Close to local amenities
- No chain
- Parking
- En-suite bedroom
- Secondary double glazing
- Great investment property
- Gas central heating throughout

Hallway

Engineered Solid wood flooring throughout living areas with doors to subsequent accommodation. Cupboard. Radiator.

Kitchen/dining room/lounge

Kitchen with a range of base, wall and draw units with solid oak work surfaces over. Dual drainer stainless steel sink with mixer tap over. Integrated fridge freezer, washing dryer and dishwasher. Electric hob with island extractor over and fitted double oven. All appliance's have been replaced in the last year. In the lounge area there is plenty of room for a dining table. There is a double glazed window to the side aspect and front aspect of the property and sliding patio doors to the front aspect that lead on to the balcony with views over Newquay. Radiators.

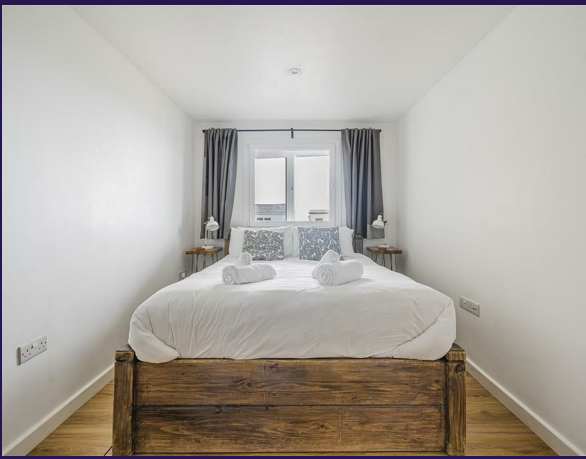
Bedroom one

Triple glazed window to the front aspect of the property. Radiator.

En-suite

The en-suite is fully tiled in slate effect ceramic tiles. There is a large walk in shower. Villeroy and Boch wash hand basin and concealed W/C. Heated towel rail and extractor fan.





Bedroom two

Triple glazed window to the side of the property. Radiator

Bathroom

The bathroom is fully tiled in slate effect ceramic tiles. Villeroy and Boch wash hand basin and concealed W/C. Bath with shower over. Heated towel rail and extractor fan.

Outside

Gated underground parking for one car in an allocated parking space. Surf store.

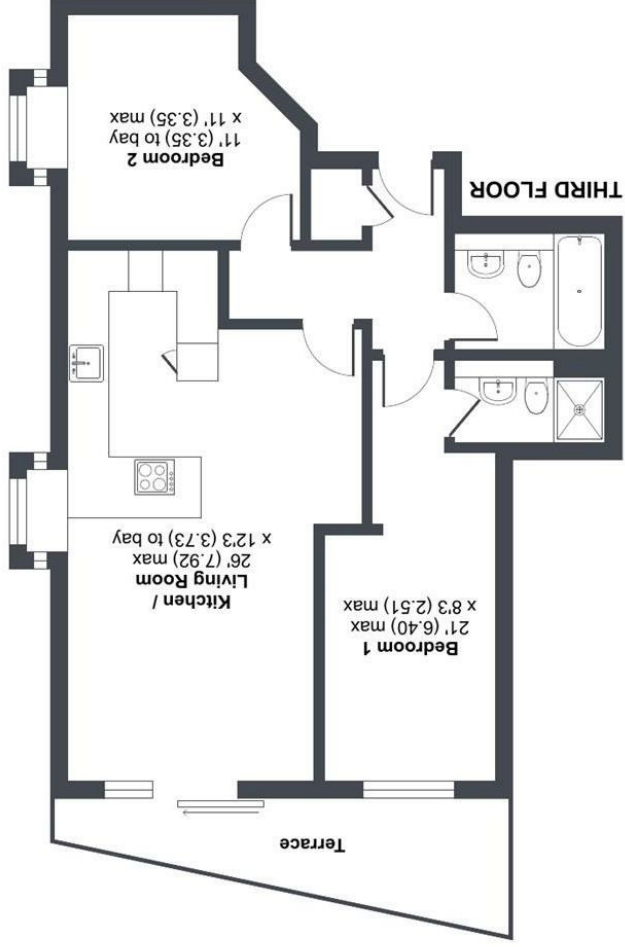
Services

The following services can be found at the property: Mains electric, gas water and drainage, however, we have not verified any of the connections.

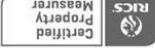


Mount Wise, Newquay, TR7

Approximate Area = 756 sq ft / 70.2 sq m
For identification only - Not to scale



Floor plan produced in accordance with RICS Property Measurement Standards incorporating International Property Measurement Standards (IPMS2 Residential). © nchecom 2024.
Produced for David Ball Agencies. REF: 1109493



david ball
Agencies

01637
850850

www.davidballagencies.co.uk



rightmove

zoopla.co.uk



Connecting People to Property Perfectly

e.sales@dba.estate
34 East Street, Newquay, Cornwall TR7 1BH

Energy Efficiency Rating	
Current	Potential
81	81
England & Wales EU Directive 2002/91/EC Not energy efficient - higher running costs Very energy efficient - lower running costs	
A (69-80) (81-91) B (81-91) C (69-80) D (55-68) E (39-54) F (21-38) G (1-20)	

1. Particulars: these particulars are not an offer or contract nor part of one. You should not rely on statements by David Ball Agencies (DBA) in the particulars or by word of mouth or in writing as being factually accurate about the property, its condition or value. Neither DBA nor any joint agent has any authority to make any representation about the property or development and accordingly any information given is entirely without responsibility in the part of the agents, sellers or lessors. 2. Images paragraphs and other information: any computer generated images, plans, drawings, accommodation schedules, specifications details or other information provided about the property ("information") are indicative only. Any such information may change at any time and must not be relied upon as being factually accurate about the property. Any photographs are indicative of the quality and style of the development and do not represent the actual fitting and furnishing at this development. 3. Regulations: any reference to alterations to the property or use of any part of the development is not a statement that any necessary planning, building regulations or other consents has been obtained. These matters must be verified by an intending purchaser. 4. Fixtures and fittings: supplied services and appliances have not been tested by the vendors agent. Prospective purchasers are advised to make their own enquiries. 5. All dimensions are approximate.