



2, Huckleberry Lane, Newquay, TR8 4PX

david ball
Agencies

Situated on a small development of just 6 properties, completed in 2021 2 Huckleberry is a modern, executive style, 4 bedroom semi-detached property. The property is heated by an efficient Grant Air Source system with the first and second floors having radiators. To the ground floor an open plan living space and cloakroom, on the first three double bedrooms and a family bathroom with the principal en-suite bedroom on the second.

Guide Price £430,000 Freehold

Key Features

- Three storey semi-detached family home
- Ground floor underfloor heating
- South facing rear garden
- Two parking spaces
- Fibre to the premises
- Four bedrooms with principle en-suite
- Efficient Grant air source heat pump (EPC-B)
- Open plan living space
- Roca sanitary ware throughout
- Cul-de-sac position

The Property

Introducing 2 Huckleberry Lane, is a superb example of a modern four-bedroom semi-detached house. Upon arrival, you're greeted by a block paved driveway leading to a hallway featuring a convenient cloakroom. From here, doors lead to the kitchen/diner and living space, with stairs ascending to the first-floor landing. Throughout the ground floor, underfloor heating ensures comfort, complemented by engineered oak flooring. There is also an understair storage cupboard as well as full sized cupboard in the lounge.

The focal point of the home is the open-plan living space, designed in an "L" shape to accommodate both entertaining and family life. Double doors off the living area provide access to the rear south-facing garden, flooding the room with natural light. The kitchen/diner area benefits from dual-aspect windows, further enhancing its brightness. The contemporary fitted kitchen boasts concrete grey and white units, square-edge work surfaces, an inset composite sink, and integrated Neff appliances.

Ascending to the first floor, you'll find a naturally lit landing, courtesy of the Velux window at the top of the stairwell. Here, three bedrooms and the family bathroom are located. Bedroom two offers generous proportions, with recessed space for a freestanding or fitted wardrobe, which along with the single fourth bedroom faces south, offering obscured views of the rural backdrop through privacy-providing trees. Bedroom three, another spacious double, also features recessed wardrobe space, while the family bathroom completes the first floor accommodation.

On the second floor, the principal bedroom awaits, complete with an en-suite. This bedroom boasts a built-in wardrobe and space for additional furniture or a dressing table area. With two Velux windows in the bedroom and one in the en-suite, the top floor benefits from abundant natural light, as well as allowing you to fall asleep to the soothing sound of rain. Radiators supplied by the air source heat pump are present on all upper levels.





Externally

To the front of the property a block paved driveway with parking for two cars side-by-side and side access to the rear garden. The south facing rear garden is approximately 50m² and is provided privacy from mature trees but still benefits from sun light.

Location

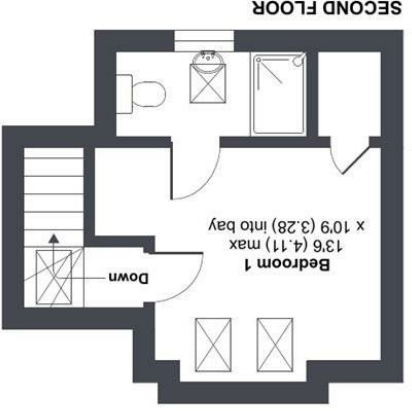
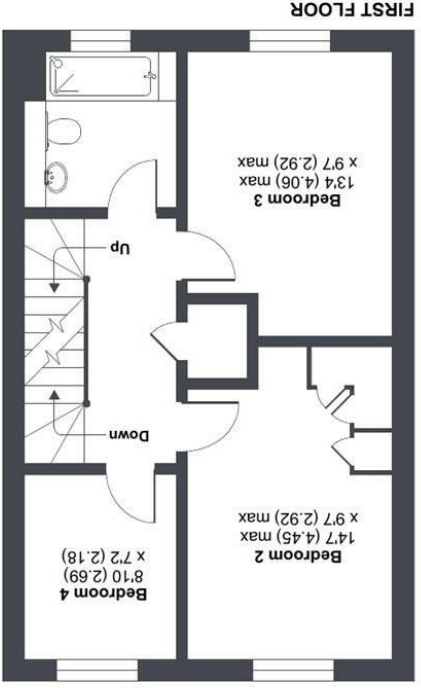
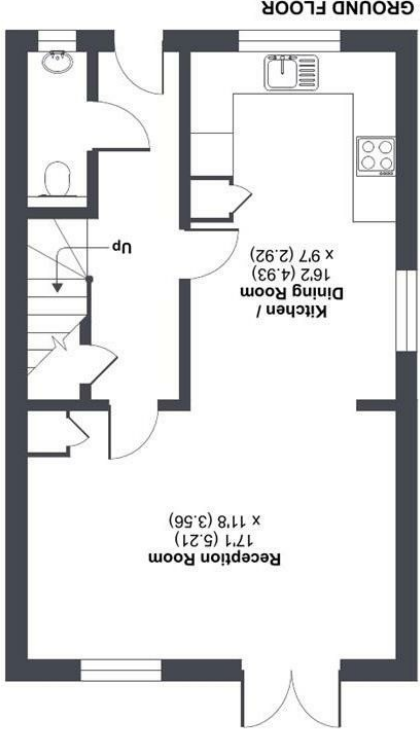
Positioned in the small hamlet, of Higher Trevelley the property is bordered to the rear by Trevelley Farm that boasts an award winning farm shop and the farm lane itself. Being on the outskirts on Newquay but still well connected to public transport and major road connections, within the catchment to the town's sought after schools and with nearby supermarkets as well as Prow Park business village. You have the benefit of the quietness and tranquility of a semi-rural property but with everything Newquay has to offer.



Huckleberry, Lane, Newquay, TR8

Approximate Area = 1203 sq ft / 111.7 sq m

For identification only - Not to scale



Floor plan produced in accordance with RICS Property Measurement Standards incorporating International Property Measurement Standards (IPMS2 Residential). © nchecom 2024. Produced for David Ball Agencies. REF: 1078400

david ball
Agencies

01637
850850

www.davidballagencies.co.uk



rightmove

zoopla.co.uk



e.sales@dba.estate
34 East Street, Newquay, Cornwall TR7 1BH

Connecting People to Property Perfectly

Energy Efficiency Rating	
Current	Potential
90	99
Very energy efficient - lower running costs	
Not energy efficient - higher running costs	
A (67-77)	A (67-77)
B (69-80)	B (69-80)
C (74-78)	C (74-78)
D (80-83)	D (80-83)
E (83-85)	E (83-85)
F (86-88)	F (86-88)
G (91-93)	G (91-93)

England & Wales
EU Directive 2002/91/EC

1. Particulars: these particulars are not an offer or contract nor part of one. You should not rely on statements by David Ball Agencies (DBA) in the particulars or by word of mouth or in writing as being factually accurate about the property, its condition or value. Neither DBA nor any joint agent has any authority to make any representation about the property or development and accordingly any information given is entirely without responsibility in the part of the agents, sellers or lessors. 2. Images paragraphs and other information: any computer generated images, plans, drawings, accommodation schedules, specifications details or other representation about the property ("information") are indicative only. Any such information may change at any time and must not be relied upon as being factually accurate about the property. Any photographs are indicative of the quality and style of the development and do not represent the actual fitting and furnishing at this development. 3. Regulations: any reference to alterations to the property or use of any part of the development is not a statement that any necessary planning, building regulations or other consents has been obtained. These matters must be verified by an intending purchaser. 4. Fixtures and fittings: supplied information provided about the property ("information") are indicative only. Any such information may change at any time and must not be relied upon as being factually accurate about the development and do not represent the actual fitting and furnishing at this development. 5. All dimensions are approximate.