

# HUNTERS<sup>®</sup>

HERE TO GET *you* THERE



## Baxter Mews

Sheffield, S6 1LG

£850 Per Calendar Month



Hunters are delighted to market this top floor, two double bedroom apartment. Situated in the attractive complex of Baxter Mews this converted mill oozes character with its original roof timbers. This modern, beautifully presented apartment briefly comprises of a; communal entrance hall with a secure door porter system with stairway access to the top floor. Having a private entrance hall with doors off to the neutrally decorated open plan kitchen, living room and sitting room/occasional bedroom. A main double bedroom together with a modern white shower room.

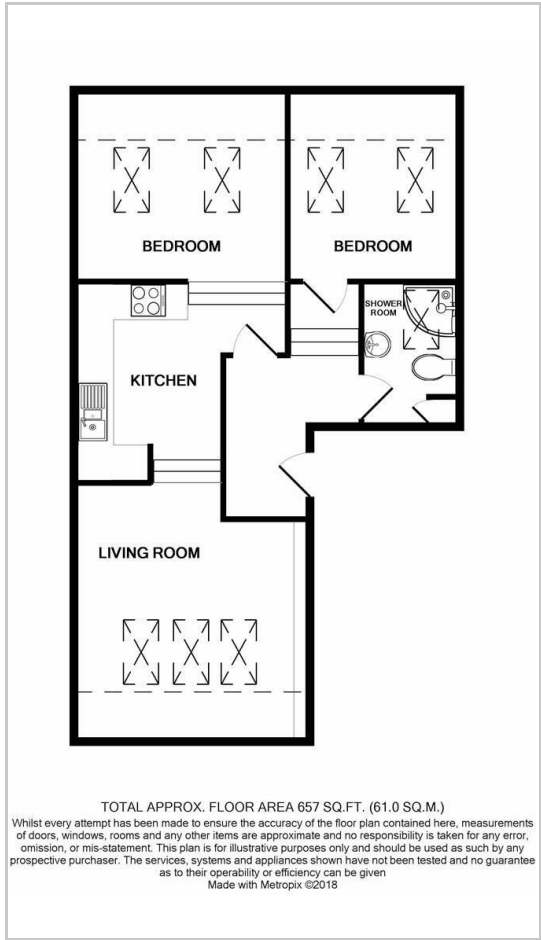
This characteristic and desirable apartment is ideally located close by to a whole host of local amenities with useful public transport links. A must view to truly appreciate the size and accommodation on offer.



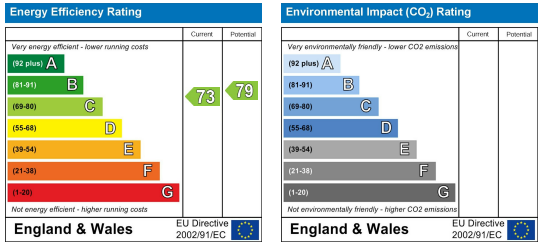
## Area Map



## Floor Plans



## Energy Efficiency Graph



These particulars are intended to give a fair and reliable description of the property but no responsibility for any inaccuracy or error can be accepted and do not constitute an offer or contract. We have not tested any services or appliances (including central heating if fitted) referred to in these particulars and the purchasers are advised to satisfy themselves as to the working order and condition. If a property is unoccupied at any time there may be reconnection charges for any switched off/disconnected or drained services or appliances - All measurements are approximate. **THINKING OF SELLING?** If you are thinking of selling your home or just curious to discover the value of your property, Hunters would be pleased to provide free, no obligation sales and marketing advice. Even if your home is outside the area covered by our local offices we can arrange a Market Appraisal through our national network of Hunters estate agents.