

HAWKESFORD

distinctly different

Residential  
New Homes  
Lettings  
Commercial

## TO LET

**SECOND FLOOR OFFICE  
7 OLD SQUARE  
WARWICK  
CV34 4RA**



**TO LET: £4,800**

## DESCRIPTION

The property is situated opposite St Mary's Church in the centre of Warwick.

A security entrance door enters into a small vestibule with a second door leading to stairs to the second-floor landing to

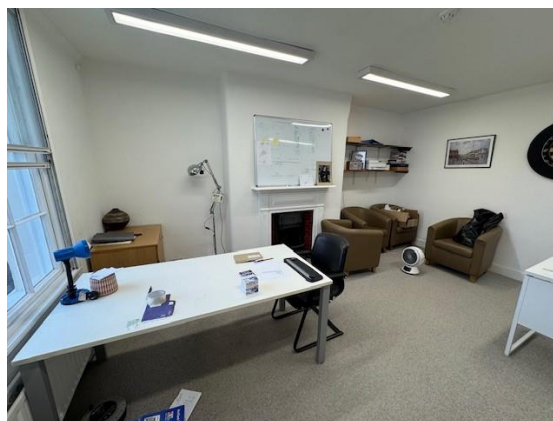
Office Four 8.8m x 3.95m having four light points to ceiling, feature fireplace, double panelled radiator and sash window overlooking front elevation.

The property benefits from a

**Shared Kitchen Area:** with sink, work surfaces with tiled splashback, door through to

Shared **Toilet** Facilities at second floor level.

Services offices to include Wi-fi and cleaner.



[www.hawkesford.co.uk](http://www.hawkesford.co.uk) t: 01926 438129 f: 01926 438127 e: [commercial@hawkesford.co.uk](mailto:commercial@hawkesford.co.uk)



A member of



**General Information:**

- Tenure:** The office is available on a twelve-month lease at £400.00 per month with one month's notice period.
- Services:** We are advised that mains water, electricity, gas and drainage are connected to the property.
- Rates:** Inclusive.
- Legal Costs:** Each party will be responsible for their own legal fees.
- Viewing:** By prior arrangement with Hawkesford Commercial Department – 01926 438129
- Special Note** All electrical appliances mentioned within these particulars have not been tested. All measurements believed to be accurate to within eight centimetres/three inches.
- Photographs** Photographs are reproduced for general information only and it must not be inferred that any item is included for sale with the property.

**Disclaimer**

Whilst we endeavour to make our sales details accurate and reliable they should not be relied on as statements or representations of fact, and do not constitute any part of an offer or contract. The seller does not make or give, nor do we, or our employees, have authority to make or give, any representation or warranty in relation to the property. Please contact the office before viewing the property. If there is any point that is of particular importance to you, we will be pleased to check the information for you and to confirm that the property remains available. This is particularly important if you are contemplating travelling some distance to view the property. We would strongly recommend that all the information, which we provide, about the property is verified on inspection and also by your conveyancer. JM/SP

[www.hawkesford.co.uk](http://www.hawkesford.co.uk) t: 01926 438129 f: 01926 438127 e: [commercial@hawkesford.co.uk](mailto:commercial@hawkesford.co.uk)



A member of



the ultimate property website



## Survey Department

Hawkesford Survey Department has Surveyors with local knowledge and experience to undertake Building Surveys, RICS Homebuyers Reports, Probate, Matrimonial, Insurance valuations, together with Rent Reviews, Lease Renewals and other professional property advice.

Hawkesford are also able to provide Energy Performance Certificates. Telephone 01926 438124 or email [surveys@hawkesford.co.uk](mailto:surveys@hawkesford.co.uk)

## Residential Sales Department

Hawkesford prides itself in its experienced and dedicated staff with good local knowledge offering a comprehensive, professional first-class service to Vendors and Purchasers alike. We are involved in the sales of all types of property, from town centre apartments to country mansions, selling by both private treaty and by auction.

Please call or email the sales office for a Free No Obligation valuation for sale. 01926 430553 or [leamington@hawkesford.co.uk](mailto:leamington@hawkesford.co.uk)

## Commercial Management Department:

For all enquiries regarding rental of property, or the management of rented property, please contact Sunny on 01926 438123 or email: [sunny@hawkesford.co.uk](mailto:sunny@hawkesford.co.uk)

## Residential Rental Department:

For all enquiries regarding residential rental of property, or the management of residential rented property, please contact our Lettings department 01926 438123, or email: [lettings@hawkesford.co.uk](mailto:lettings@hawkesford.co.uk)

## Financial Services:

For mortgage advice, please contact this office on 01926 430553 and we will arrange for our independent mortgage advisor to contact you to give you up to the minute mortgage information.

[www.hawkesford.co.uk](http://www.hawkesford.co.uk) t: 01926 438129 f: 01926 438127 e: [commercial@hawkesford.co.uk](mailto:commercial@hawkesford.co.uk)



A member of



the ultimate property website

